



Dublin PV grid-connected inverter





Overview

Grid-tie inverters convert DC electrical power into AC power suitable for injecting into the electric utility company grid. The grid tie inverter (GTI) must match the phase of the grid and maintain the output voltage slightly higher than the grid voltage at any instant. A high-quality modern grid-tie inverter has a fixed unity , which means its output voltage and current are perfectly lined up, and its phase angle is within 1° of the AC power grid. The inverter has an internal com.

For many Irish homeowners, Solis or Sigenergy hybrid inverters provide the best mix of reliability, performance, and future-readiness. For shaded or complex roofs, Enphase microinverters are an excellent choice.

For many Irish homeowners, Solis or Sigenergy hybrid inverters provide the best mix of reliability, performance, and future-readiness. For shaded or complex roofs, Enphase microinverters are an excellent choice.

When investing in a solar PV system in Ireland, panels often get most of the attention. But the solar inverter is just as important. It's the heart of the system, converting DC power from your panels into usable AC electricity for your home or business. Choosing the right inverter ensures you.

A solar grid-tied inverter converts the DC output of PV modules into AC power suitable for transmission on the power grid, often deploying reactive power to meet new grid codes. It must always optimize the power output via MPPT (maximum power point tracking) and additionally monitor both the system.

A grid-tie inverter converts direct current (DC) into an alternating current (AC) suitable for injecting into an electrical power grid, at the same voltage and frequency of that power grid. Grid-tie inverters are used between local electrical power generators: solar panel, wind turbine.

An inverter is one of the most important pieces of equipment in a solar energy system. It's a device that converts direct current (DC) electricity, which is what a solar panel generates, to alternating current (AC) electricity, which the electrical grid uses. In DC, electricity is maintained at.

This reference design implements single-phase inverter (DC/AC) control using a C2000™ microcontroller (MCU). The design supports two modes of operation for the inverter: a voltage source mode using an output LC filter, and a grid connected



mode with an output LCL filter. High-efficiency, low THD.

The micro photovoltaic (PV) grid-connected inverter market is experiencing significant growth driven by the broader digital transformation initiatives within traditional industries such as energy, manufacturing, and utilities. As these sectors adopt advanced digital technologies, the integration of.



Dublin PV grid-connected inverter



Grid-connected photovoltaic inverters: Grid codes, topologies and

The latest and most innovative inverter topologies that help to enhance power quality are compared. Modern control approaches are evaluated in terms of robustness, ...

Micro Photovoltaic Grid-connected Inverter Market Forecast: ...

The micro photovoltaic (PV) grid-connected inverter market is experiencing significant growth driven by the broader digital transformation initiatives within traditional ...



[Solar Grid Inverter , Alternative Energy , Farnell Ireland](#)

A solar grid-tied inverter converts the DC output of PV modules into AC power suitable for transmission on the power grid, often deploying reactive power to meet new grid codes.

A Review of Grid-Connected Inverters and Control Methods ...

Beginning with an introduction to the fundamentals of grid-connected inverters, the paper elucidates the impact of unbalanced grid



voltages on their performance.



Grid-tie inverter

Overview
Operation
Payment for injected power
Types
Datasheets
External links

Grid-tie inverters convert DC electrical power into AC power suitable for injecting into the electric utility company grid. The grid tie inverter (GTI) must match the phase of the grid and maintain the output voltage slightly higher than the grid voltage at any instant. A high-quality modern grid-tie inverter has a fixed unity power factor, which means its output voltage and current are perfectly lined up, and its phase angle is within 1° of the AC power grid. The inverter has an internal com...

[Solar Integration: Inverters and Grid Services Basics](#)

As more solar systems are added to the grid, more inverters are being connected to the grid than ever before. Inverter-based generation can ...



[Solar Integration: Inverters and Grid Services Basics](#)

As more solar systems are added to the grid, more inverters are being connected to the grid than ever before. Inverter-based generation can

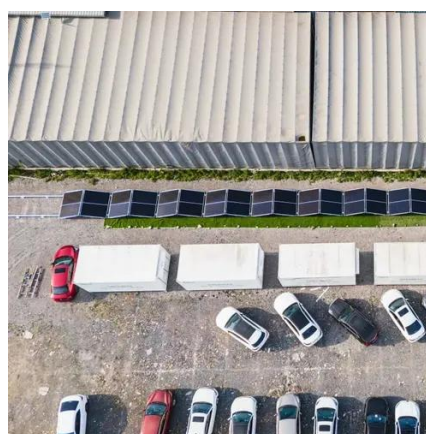


produce energy at any frequency and does not ...



Grid Connected Inverter Reference Design (Rev. D)

The control design of this type of inverter may be challenging as several algorithms are required to run the inverter. This reference design uses the C2000 microcontroller (MCU) family of ...



Grid-Connected Solar Photovoltaic (PV) System

It covers system configurations, components, standards such as UL 1741, battery backup options, inverter sizing, and microinverter systems. ...

The Best Solar Inverters for Irish Conditions

Discover the best solar inverters for Irish homes in 2025. Learn which brands work best in Ireland's climate, from Huawei and SolarEdge to Enphase and Fronius.





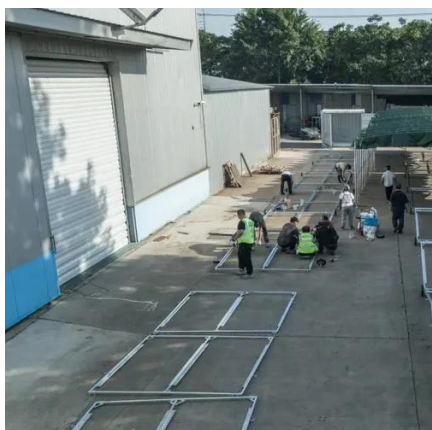
[A Comprehensive Review on Grid Connected ...](#)

Different multi-level inverter topologies along with the modulation techniques are classified into many types and are elaborated ...



Grid-tie inverter

A high-quality modern grid-tie inverter has a fixed unity power factor, which means its output voltage and current are perfectly lined up, and its phase angle is within 1° of the AC power grid.



[Grid-Connected Solar Photovoltaic \(PV\) System](#)

It covers system configurations, components, standards such as UL 1741, battery backup options, inverter sizing, and microinverter systems. Additionally, it touches on utility grid-tied PV ...

A Comprehensive Review on Grid Connected Photovoltaic Inverters ...

Different multi-level inverter topologies along with the modulation techniques are classified into many types and are elaborated in detail. Moreover, different control reference ...





Contact Us

For inquiries, pricing, or partnerships:

<https://www.sccd-sk.eu>

Phone: +32 2 808 71 94

Email: info@sccd-sk.eu

Scan QR code for WhatsApp.

