

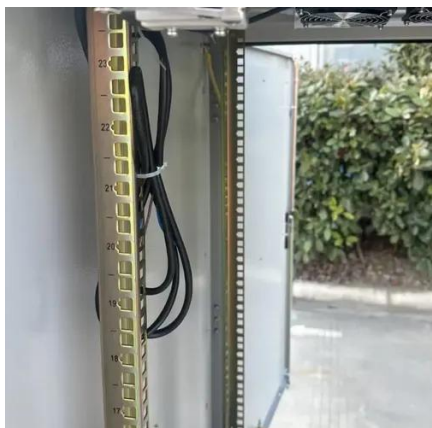


Dushanbe lithium iron phosphate bms battery





Dushanbe lithium iron phosphate bms battery



Design of Battery Management System (BMS) for Lithium Iron Phosphate

Lithium iron phosphate battery (LFP) is one of the longest lifetime lithium ion batteries. However, its application in the long-term needs requires specific con

LifePO4 BMS: The Expert Guide

Learning the fundamentals of LifePO4 BMS technology and functionality will help you get the most from your batteries. This guide ...



[MAOXIN LONG LASTING DURABILITY DUSHANBE LITHIUM ...](#)

In this article, we will compare three leading BMS solutions--JK BMS, JBD Smart BMS, and DALY BMS--to help you choose the right BMS for your lithium-ion (Li-ion) or lithium iron ...

[Design the right BMS for LiFePO4 batteries](#)

Most importantly, to design a safe, stable, and higher-performing lithium iron phosphate battery, you must test your BMS designs early and often,



and pay special attention ...



LifePO4 BMS: The Expert Guide

Learning the fundamentals of LifePO4 BMS technology and functionality will help you get the most from your batteries. This guide covers everything a beginner needs to ...

Design of Battery Management System (BMS) for Lithium Iron Phosphate

A high-fidelity battery model which considers the battery polarization and hysteresis phenomenon is presented to approximate the high nonlinearity of the lithium iron phosphate ...



[How to Choose a BMS for LiFePO4 Cells](#)

In this article, we will guide you through the process of choosing a BMS specifically designed for LiFePO4 cells. Before delving into the selection process, it is essential to understand the ...





[What is LiFePO4 Battery Management System ...](#)

Yes, you can DIY a LiFePO4 lithium battery with a Battery Management System (BMS), but it requires some technical expertise, safety ...



Lithium iron phosphate battery

Lithium iron phosphate (LiFePO₄) batteries, known for their stable operating voltage (approximately 3.2V) and high safety, have been widely used in ...

Smart BMS for lithium iron phosphate battery: Unlocking Safety

A Smart BMS for lithium iron phosphate battery is vital for safety. This guide explains how an intelligent BMS extends battery life and provides real-time control for all ...



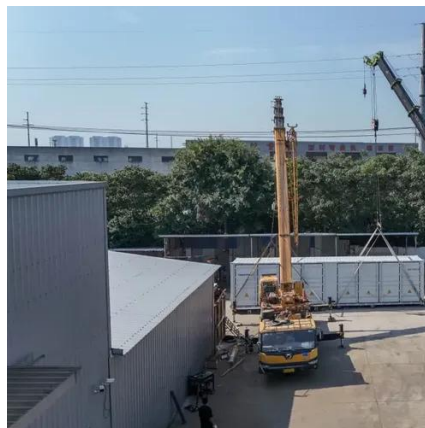
[Dushanbe lithium iron phosphate bms battery](#)

The Smart BMS 12/200 is an all-in-one Battery Management system for Victron Lithium-Iron-Phosphate (LiFePO₄) Smart Batteries. It has been specifically designed for 12V systems with



[Design the right BMS for LiFePO4 batteries](#)

Most importantly, to design a safe, stable, and higher-performing lithium iron phosphate battery, you must test your BMS ...

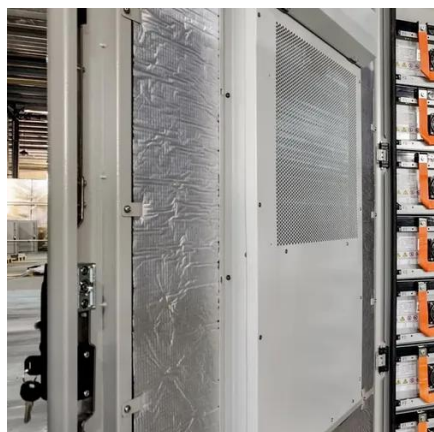


[MAOXIN LONG LASTING DURABILITY DUSHANBE LITHIUM BATTERY](#)

In this article, we will compare three leading BMS solutions--JK BMS, JBD Smart BMS, and DALY BMS--to help you choose the right BMS for your lithium-ion (Li-ion) or lithium iron ...

[How to Choose a BMS for LiFePO4 Cells](#)

In this article, we will guide you through the process of choosing a BMS specifically designed for LiFePO4 cells. Before delving into the selection ...



[Design of Battery Management System \(BMS\) for ...](#)

A high-fidelity battery model which considers the battery polarization and hysteresis phenomenon is presented to approximate the ...



What is LiFePO4 Battery Management System (BMS) - LiTime-US

Yes, you can DIY a LiFePO4 lithium battery with a Battery Management System (BMS), but it requires some technical expertise, safety precautions, and the right components.



Lithium iron phosphate battery

Lithium iron phosphate (LiFePO₄) batteries, known for their stable operating voltage (approximately 3.2V) and high safety, have been widely used in solar lighting systems.

Design of Battery Management System (BMS) for Lithium Iron ...

Lithium iron phosphate battery (LFP) is one of the longest lifetime lithium ion batteries. However, its application in the long-term needs requires specific con





Contact Us

For inquiries, pricing, or partnerships:

<https://www.sccd-sk.eu>

Phone: +32 2 808 71 94

Email: info@sccd-sk.eu

Scan QR code for WhatsApp.

