



Eritrea has the largest number of solar communication battery cabinets





Eritrea has the largest number of solar communication battery cabinets



Eritrea

Eritrea, situated in East Africa along the stunning Red Sea coastline, offers a rich tapestry of history, culture, and natural beauty. This nation is bordered by Sudan to the west, Ethiopia to ...

Eritrea , History, Flag, Capital, Population, Map, & Facts , Britannica

Eritrea, country of the Horn of Africa, located on the Red Sea. The country is bounded to the southeast by Djibouti, to the south by Ethiopia, to the west by Sudan, and to ...



Eritrea , Culture, Facts & Travel ,

Eritrea is a poor East African country, the capital of which is Asmara. Formerly a province of Ethiopia, Eritrea became an independent country on May 24, 1993, following a 30-year ...



Eritrea

There are no photos for Eritrea. Visit the Definitions and Notes page to view a description of each topic.

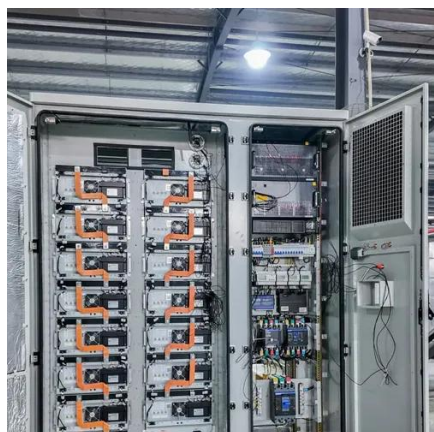


Eritrea

Eritrea, officially the State of Eritrea, is a country in the Horn of Africa region of East Africa. Its capital and largest city is Asmara. The country is borde

Eritrea country profile

Eritrea won independence from Ethiopia in 1993 after a 30-year war, but has been plagued by repression at home and tense relations with its neighbours. Bordered by Sudan, ...



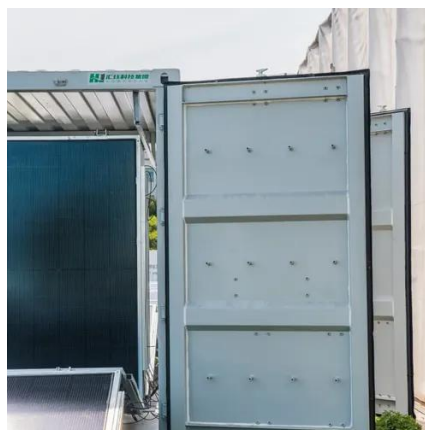
All About Eritrea

Following a UN-supervised referendum in Eritrea (dubbed UNOVER) in which the Eritrean people overwhelmingly voted for independence, Eritrea declared its independence ...



Eritrea

Eritrea, officially State of Eritrea, is a country situated in northern East Africa. A former colony of Italy, it fought a thirty-year war with Ethiopia for its independence.



Our History - Eritrean Embassy

After years of continuous violations of the Federation terms, in November 1962, Ethiopia's emperor dissolved the Federation and annexed Eritrea, triggering the 30-year armed struggle ...

Eritrea

Its capital and largest city is Asmara. The country is bordered by Ethiopia to the south, Sudan to the west, and Djibouti to the southeast. The northeastern and eastern parts of Eritrea have an ...





Contact Us

For inquiries, pricing, or partnerships:

<https://www.sccd-sk.eu>

Phone: +32 2 808 71 94

Email: info@sccd-sk.eu

Scan QR code for WhatsApp.

