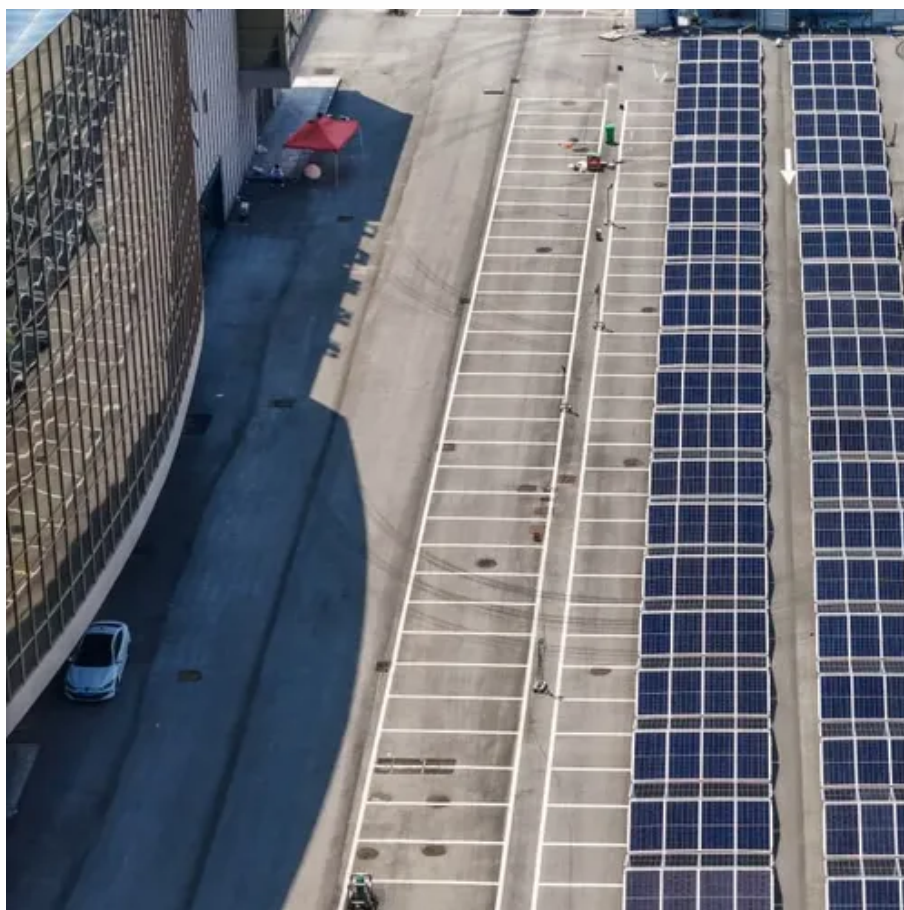




# Factory price acme switchgear in Chicago





## Overview

---

To get started, you can request a quote through our website and fill out the seller form with details about your Switchgear. Or you can text us photos and a brief description of your items to 866-474-1467.

To get started, you can request a quote through our website and fill out the seller form with details about your Switchgear. Or you can text us photos and a brief description of your items to 866-474-1467.

What types of switchgear does Acme Switch Gear manufacture?

Acme Switch Gear manufactures a wide range of switchgear, including low-voltage, medium-voltage, and high-voltage switchgear. Our products cater to various industrial and commercial applications, ensuring safety and reliability in.

Chicago Switchgear Buyer was Founded in 2004 With The Goal of Providing our Customers With The Best Prices For There Used or New Switchgear Across The Country. Over The Years, we have grown to become a Trusted Name in The Industry For Being The Largest chicago electrical buyer, Thanks to our.

If you are looking to sell switchgear, including both high and low-voltage options, and other components like fuses, panels, motors, and generators, we will buy them from you. When we say we are the best Switchgear Buyers in Chicago, it means we are accepting equipment from all major brands.

The switchgear electrical market in Chicago is experiencing significant growth, driven primarily by the city's robust industrial sectors. Chicago serves as a hub for key industries such as manufacturing, food processing, and transportation. These sectors rely heavily on consistent and reliable.

Switchgear Buyer in Chicago or Sell Circuit Breakers is here to make it easy! We specialize in helping you turn unwanted Switchgear into cash quickly and easily. Why contact us when you are ready to get a Switchgear Buyer in Chicago?

Selling a Switchgear might seem complicated, but partnering with.

Address: 8755 W. Higgins Road, Suite 500, Chicago, IL 60631 United States



Business Type: Manufacturer Description: Littelfuse is a global manufacturer of leading technologies in circuit protection, power control, and sensing. Sold worldwide, our products are found in automotive and commercial.



## Factory price acme switchgear in Chicago



### Switchgear Manufacture

As a trusted provider of custom switchgear manufacturing in Chicago, we design and build electrical systems that meet the highest standards of safety, reliability, and long-term ...

### CHICAGO SWITCHGEAR BUYER

Chicago Switchgear Buyer was Founded in 2004 With The Goal of ...



### CHICAGO SWITCHGEAR BUYER

Chicago Switchgear Buyer was Founded in 2004 With The Goal of Providing our Customers With The Best Prices For There Used or New Switchgear Across The Country. Over The Years, we ...



## [Panelboards and Switchgear Suppliers in Chicago, Illinois](#)

Locate Panelboards and Switchgear suppliers, manufacturers & distributors in Chicago, Illinois. Interactive map of Chicago, Illinois provided.



### Chicago Switchgear Buyer

Chicago Switchgear Buyer - Electrical supply store in Chicago. Get directions, read reviews, and find contact information on ZAUBEE.



### [Find a Sales Contact , Acme Electric](#)

Connect with our Acme Electric sales team who can provide personalized assistance, answer your questions, and guide you through the purchasing process. Still need help?



### Chicago Switchgear Buyer

Chicago Switchgear Buyer is your trusted partner for buying all types of used and surplus switchgear and electrical equipment in the Chicago area and ...

**European Warehouse**  
 7-15 days  
 ONE-STOP SOLUTION  
 65kWh 30kW  
 130kWh 30kW  
 130kWh 60kW



## [Switchgear Buyer in Chicago , Double-D-Circuitbreakers](#)

Selling your Switchgear in Chicago doesn't have to be complicated. By choosing the right selling method, working with reputable buyers like Double-D-Circuitbreakers, and taking steps to ...

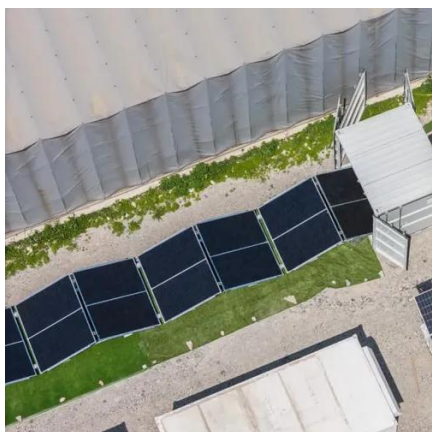


## **Chicago Switchgear Buyer**

Chicago Switchgear Buyer is your trusted partner for buying all types of used and surplus switchgear and electrical equipment in the Chicago area and beyond.

## [ACME Switchgear - ACME Electric Switchgear L.L.C.](#)

Acme Switch Gear manufactures a wide range of switchgear, including low-voltage, medium-voltage, and high-voltage switchgear. Our products cater to various industrial and commercial ...



## **Switchgear Buyers in Chicago**

With our ten-plus years of industry experience, we have expertise in buying spare electrical components from businesses and homeowners throughout the United States. As we are one ...



## [Custom & Rush Switchgear & Switchboards , Chicago, IL](#)

All of our standard products are available with rush shipping to the Chicago area and can be custom-engineered for your specific application. Safety doesn't happen by accident.





## Contact Us

---

For inquiries, pricing, or partnerships:

<https://www.sccd-sk.eu>

Phone: +32 2 808 71 94

Email: [info@sccd-sk.eu](mailto:info@sccd-sk.eu)

Scan QR code for WhatsApp.

