



Fixed base station equipment for emergency communications





Overview

Base stations (or repeaters) are high-power (50-100 watts) fixed radios installed in sites with high-performance antennas to provide maximum communications range. These radios are the building blocks of a radio system.

Base stations (or repeaters) are high-power (50-100 watts) fixed radios installed in sites with high-performance antennas to provide maximum communications range. These radios are the building blocks of a radio system.

A communication system is made up of devices that employ one of two communication methods (wireless or wired), different types of equipment (portable radios, mobile radios, base/fixed station radios, and repeaters), and various accessories (examples include speaker microphones, battery eliminators).

A fixed-location radio system for public safety, emergency management and transportation. Includes automatic NOAA "all-hazard" warnings, IP-based programming with telco, transceiver or local redundancy; audio processor and UPS. Options: multi-station synchronization, battery backup, simulcast.

The SATCOM Base Station is designed for global, in-theater and on-the-move operations. This Base Station provides secure Over-the-Horizon (OTH) data communications with HOOK2 PRC-112G® and HOOK3 radios. This system is a powerful, global, cost-effective solution that provides assured communications.

In the world of radio communications, a radio base station plays a vital role in ensuring reliable and seamless communication across a wide area. Whether used in mobile networks, professional communication systems, or emergency response scenarios, base stations are essential for facilitating voice.

Great options await in 2025's top ham radio base stations for emergency comms—discover which model best fits your needs today. If you're looking for the best ham radio base stations for emergency communications in 2025, I recommend checking out models like the Galaxy DX-2547, AT-5555N II, BTECH.

Product Director Base Emergency Communications System (BECS) supports installation force protection, public safety, installation management, and homeland security. BECS manages, engineers, acquires, delivers, and supports CONUS non-



tactical Land Mobile Radio (LMR), Computer-Aided Dispatch (CAD).



Fixed base station equipment for emergency communications

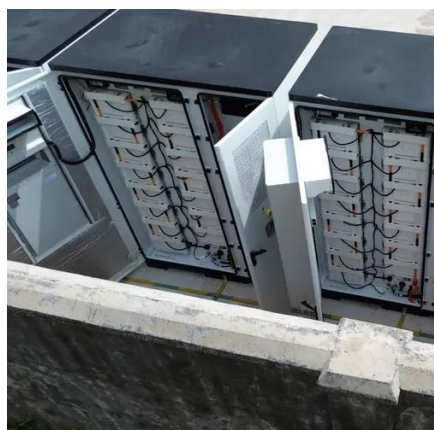
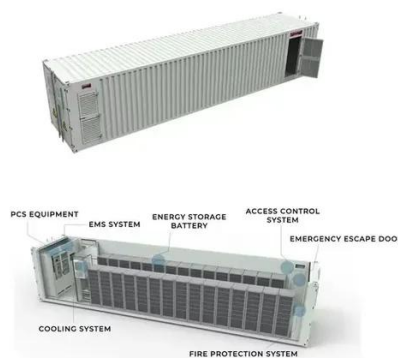


[Guide for the Selection of Communication Equipment for ...](#)

The RF communication equipment considered in this guide includes portable radios, mobile radios, base/fixed station radios, repeaters, and base station/repeaters.

13 Best Ham Radio Base Stations for Emergency Communications ...

Great options await in 2025's top ham radio base stations for emergency comms--discover which model best fits your needs today.



SATCOM Base Station

This Base Station provides secure Over-the-Horizon (OTH) data communications with HOOK2 PRC-112G® and HOOK3 radios. This system is a powerful, global, cost-effective solution that ...

How a Base Station Radio Strengthens Campus and Emergency Communication

At the center of that network is the base station radio - a fixed radio unit that anchors



communication across handheld devices, vehicles, and dispatch centers.



PSC Magazine (PSCS)

Base stations (or repeaters) are high-power (50-100 watts) fixed radios installed in sites with high-performance antennas to provide maximum communications range. These ...

[Radio Base Stations for Secure Communication](#)

Discover BelFone's advanced radio base stations designed for reliable, scalable, and secure communication. Perfect for public safety, industrial, and enterprise use, BelFone's solutions ...



Radio station & signage

A fixed-location radio system for public safety, emergency management ...



[Two-Way Radio Base Stations , Motorola, ICOM, Kenwood , PSI](#)

Explore high-performance base stations for two-way radios from Motorola, ICOM, and Kenwood. Ideal for dispatch, repeater systems, and secure fixed installations.



Movable Base Stations in Mobile Networks for Emergency Communications

An emergency communication system is necessary for first responders, who need to enter areas with no network coverage or damaged network infrastructure due to n

[Base Emergency Communications System](#)

CHS supports calls routed from Army telephone networks and commercial (non-government) sources via NG-911 Emergency Services IP Network (ESInet) to automatically deliver 9-1-1 ...



Radio station & signage

A fixed-location radio system for public safety, emergency management and transportation. Includes automatic NOAA "all-hazard" warnings, IP-based programming with telco, transceiver ...





Contact Us

For inquiries, pricing, or partnerships:

<https://www.sccd-sk.eu>

Phone: +32 2 808 71 94

Email: info@sccd-sk.eu

Scan QR code for WhatsApp.

