



# Full network signal base station





## Overview

---

A base transceiver station (BTS) or a baseband unit (BBU) is a piece of equipment that facilitates between (UE) and a network. UEs are devices like (handsets), phones, computers with connectivity, or antennas mounted on buildings or telecommunication towers. The network can be that of any of the wireless communication technologies like , , , , or other

A base station connects your phone to the network. It acts as a hub between mobile devices and the core system. Base stations form the backbone of 4G LTE and 5G networks. They provide the coverage you need for calls and data. Base stations enable voice, data, and internet access.

A base station connects your phone to the network. It acts as a hub between mobile devices and the core system. Base stations form the backbone of 4G LTE and 5G networks. They provide the coverage you need for calls and data. Base stations enable voice, data, and internet access.

A base station represents an access point for a wireless device to communicate within its coverage area. It usually connects the device to other networks or devices through a dedicated high bandwidth wire of fiber optic connection. Base stations typically have a transceiver, capable of sending and.

A base transceiver station (BTS) or a baseband unit[1] (BBU) is a piece of equipment that facilitates wireless communication between user equipment (UE) and a network. UEs are devices like mobile phones (handsets), WLL phones, computers with wireless Internet connectivity, or antennas mounted on.

At its core, a BTS is the equipment that facilitates wireless communication between the mobile network and your phone. This piece of technology is the backbone of mobile communication, allowing us to make calls, send texts, and access the internet seamlessly. In this article, we will delve into the.

A base station plays a pivotal role in the realm of telecommunications, acting as the cornerstone of connectivity. It enables seamless communication by linking various wireless devices to broader networks, ensuring that data flows efficiently from one point to another. A base station is an integral.

A base station connects your phone to the network. It acts as a hub between mobile devices and the core system. Base stations form the backbone of 4G LTE

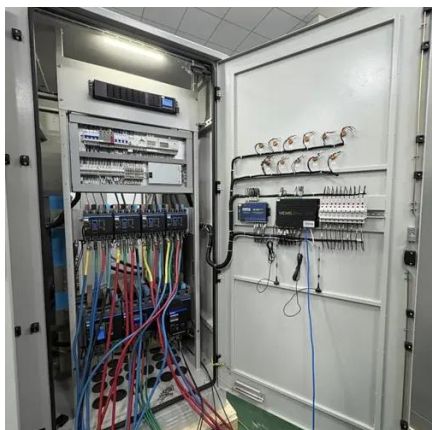


and 5G networks. They provide the coverage you need for calls and data. Base stations enable voice, data, and internet access. They transmit.

In the world of wireless communication, Base Transceiver Stations (BTS) play a crucial role in ensuring seamless connectivity, especially within buildings. Shared Access explores what a BTS is, its components, functions and the significance of BTS in providing in-building wireless coverage. What is.



## Full network signal base station



### Base transceiver station

A base transceiver station (BTS) or a baseband unit (BBU) is a piece of equipment that facilitates wireless communication between user equipment (UE) and a network. UEs are devices like mobile phones (handsets), WLL phones, computers with wireless Internet connectivity, or antennas mounted on buildings or telecommunication towers. The network can be that of any of the wireless communication technologies like GSM, CDMA, wireless local loop, Wi-Fi, WiMAX or other

### [Base Transceiver Station: Core Functionality Explained](#)

Discover what a Base Transceiver Station is and how it's pivotal in mobile communication networks. Unlock the essentials of BTS functionality here.



### [Understanding the Basics: What is a Base ...](#)

A Base Transceiver Station (BTS) plays a pivotal role in ...

### What Is A Base Station?

A base station is an integral component of wireless communication networks, serving as a central



point that manages the transmission and reception of signals between ...



## Base transceiver station

A base transceiver station (BTS) or a baseband unit[1] (BBU) is a piece of equipment that facilitates wireless communication between user equipment (UE) and a network.



## Understanding Base Transceiver Stations: The Backbone of ...

Simply put, a base transceiver station (BTS) is a vital component of mobile networks, serving as the communication hub that connects your mobile phone to the wider ...



## Base Transceiver Stations (BTS)

What is a Base Transceiver Station? A Base Transceiver Station, commonly known as BTS, is a critical piece of equipment in wireless communication networks.



## Base Stations

The present-day tele-space is incomplete without the base stations as these constitute an important part of the modern-day scheme of wireless communications. They are ...



### [Understanding Base Stations: The Backbone of Wireless ...](#)

In cellular networks, a base station typically consists of antennas, a transmitter/receiver system, and a base station controller (BSC). The base station is ...

### [Understanding BTS \(Base Transceiver Station\) in ...](#)

The Base Transceiver Station (BTS) is a fundamental component of any cellular network infrastructure. It plays a crucial role in providing effective coverage and ensuring the reliability ...



### [What are Base Station in Telecommunications?](#)

The Backbone of Wireless Networks A base station connects your phone to the network. It acts as a hub between mobile devices and the core system. Base stations form the backbone of 4G ...



## Understanding the Basics: What is a Base Transceiver Station?

A Base Transceiver Station (BTS) plays a pivotal role in maintaining network connectivity. By bridging the gap between mobile users and the core network, it ensures ...





## Contact Us

---

For inquiries, pricing, or partnerships:

<https://www.sccd-sk.eu>

Phone: +32 2 808 71 94

Email: [info@sccd-sk.eu](mailto:info@sccd-sk.eu)

Scan QR code for WhatsApp.

