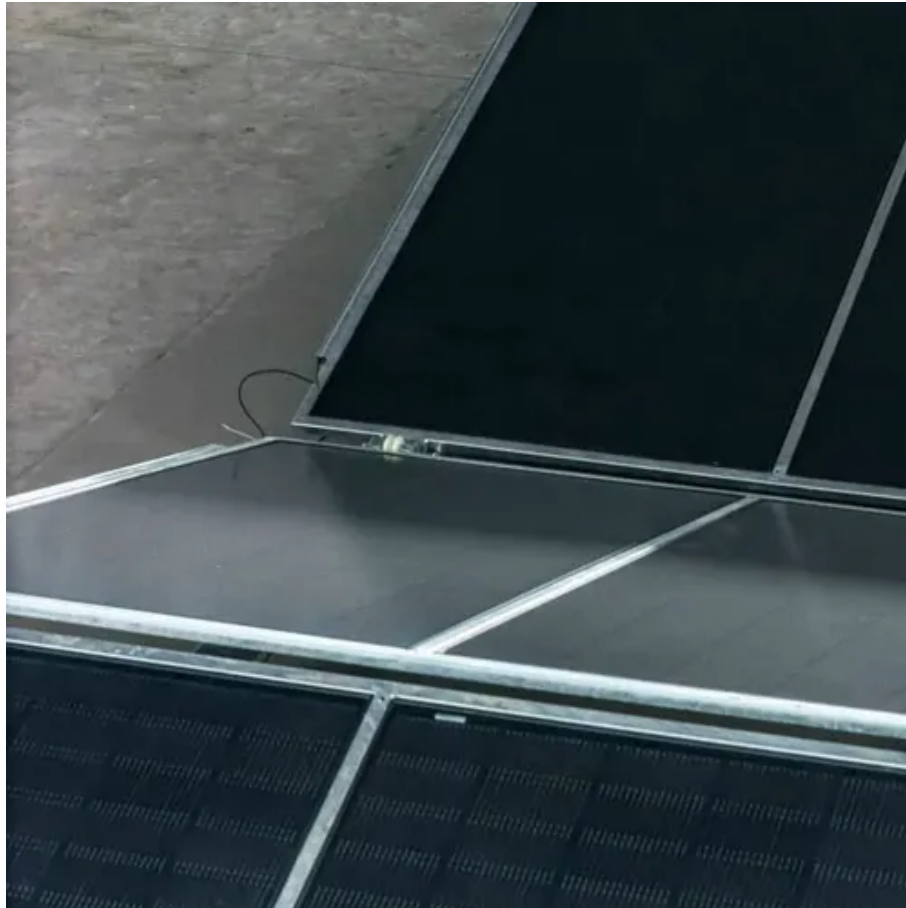




# Grid-connected inverter power-on self-test





## Overview

---

To test grid-connected solar panels, follow these steps: 1. Check the inverter's display for performance metrics; 2. Measure voltage and current output with a multimeter; 3. Inspect physical connections and wiring; 4. Assess the efficiency losses by comparing generation on sunny.

To test grid-connected solar panels, follow these steps: 1. Check the inverter's display for performance metrics; 2. Measure voltage and current output with a multimeter; 3. Inspect physical connections and wiring; 4. Assess the efficiency losses by comparing generation on sunny.

The development of standard test procedures and a corresponding certification program that delivers accurate, believable estimates of inverter performance and, ultimately, system performance, is needed to ensure that market claims and customer expectations are being met. The objective of this.

PV inverter is mainly based on its efficiency. The inverter must be capable to attain a high efficiency over a wide range of loads. Due to the reduced, and high efficiency is achieved. and disconnect it from the grid for safety purposes more effective utilization of generated power. However, the.

Such protocols increase the confidence of system owner/operators that an inverter deployed in a proposed system will engage in typical behaviors to ensure interoperability with other units and ancillary equipment (e.g. protection equipment). This paper presents systematic and comprehensive test.

The Configuration Interface will indicate the reason for self-test failure. Follow the appropriate troubleshooting steps below and reset the inverter (via Configuration Interface or AC power cycle) to trigger a new self-test. Check DC wiring, connections, panels, and rapid shutdown devices for.

How do I test a PV inverter?

Use an AC /grid emulator to load and test the inverter's output. Verifying the performance of PV inverters under varying weather and load conditions requires simulating solar arrays in the lab and AC /grid. Do you need an electrician to test a solar inverter?



The testing.

To test grid-connected solar panels, follow these steps: 1. Check the inverter's display for performance metrics; 2. Measure voltage and current output with a multimeter; 3. Inspect physical connections and wiring; 4. Assess the efficiency losses by comparing generation on sunny days versus cloudy.



## Grid-connected inverter power-on self-test

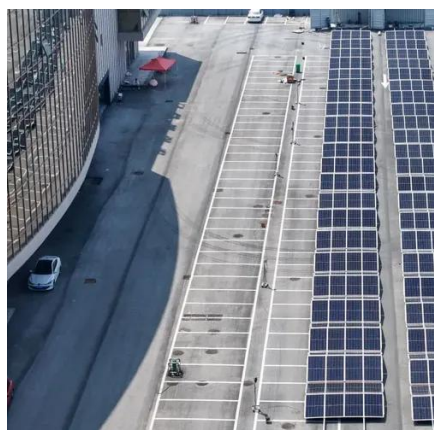
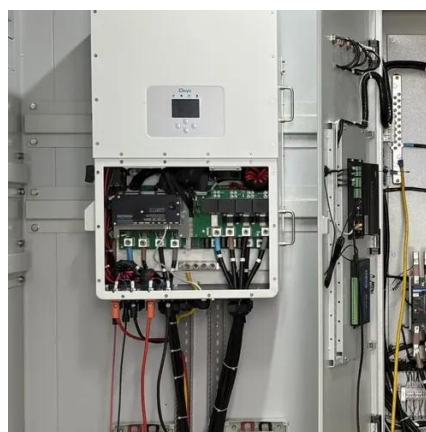


### EN 50530 - Efficiency Testing of Grid-Connected PV Inverters

To ensure compliance with EN 50530, manufacturers and installers must undergo rigorous testing protocols that evaluate the inverters ability to convert DC power from solar panels into AC ...

### Auto Test Application

This section details how to perform the self-test using the inverter display. Photos of the display, showing the inverter serial number and the test results can be taken and submitted to the grid ...



### Microsoft Word

The tests described in this document apply to grid-connected inverters as well as the stand-alone features of inverters that serve dual roles. They may also be adopted for other uses, such as ...

### [Photovoltaic inverter self-test process diagram](#)

A variety of power topologies are used to condition power from the PV source so that it can be used in variety of applications such as to feed power into



the grid (PV inverter) ...



## Performance Test Protocol for Evaluating Inverters Used in ...

The objective of this document is to provide a test protocol for evaluating and certifying the performance of inverters for grid-connected PV system applications<sup>1</sup>.

### [Application Note Inverter SPI Self-Test](#)

he grid first perform an SPI self-test. During this self-test, the inverter checks the trip times for over voltage, under voltage, over frequency and under frequency - to ensure that he inverter ...



### [Troubleshooting the Solar Inverter Self-Test](#)

The Configuration Interface will indicate the reason for self-test failure. Follow the appropriate troubleshooting steps below and reset the inverter (via Configuration Interface or AC power ...



## [Photovoltaic grid-connected inverter self-test](#)

This paper researched and developed the PV grid-connected inverter detects platform, analyzed the PV grid-connected inverter protective function and testing methods and procedures.

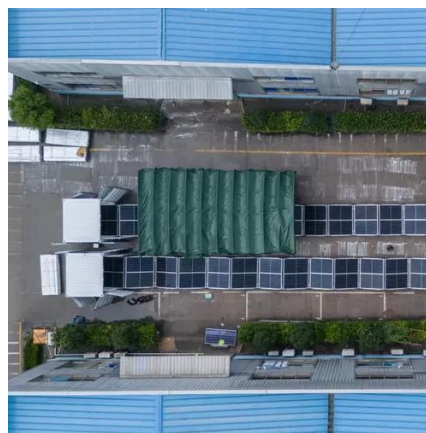


## [How to test grid-connected solar panels . NenPower](#)

Understanding the performance of grid-connected solar panels is paramount for ensuring optimal energy production. By employing various testing methodologies, one can ...

## [Experimental Characterization Test of a Grid-Forming ...](#)

A commercial GFM inverter is used to verify the test protocols and to understand the inverter's performance and functionalities. In particular, required configuration and tuning of the inverter ...



## [How to test grid-connected solar panels . NenPower](#)

Understanding the performance of grid-connected solar panels is paramount for ensuring optimal energy production. By employing ...



## Contact Us

---

For inquiries, pricing, or partnerships:

<https://www.sccd-sk.eu>

Phone: +32 2 808 71 94

Email: [info@sccd-sk.eu](mailto:info@sccd-sk.eu)

Scan QR code for WhatsApp.

