



Home BMS battery management system





Overview

A battery management system (BMS) is any electronic system that manages a (or) by facilitating the safe usage and a long life of the battery in practical scenarios while monitoring and estimating its various states (such as and), calculating secondary data, reporting that data, controlling its environment, authenticating or it.

It's an embedded electronic system that monitors, manages, and protects battery cells by tracking: Real-World Use Cases: Your Tesla's driving range relies on its BMS to balance 7,000+ lithium-ion cells. A solar-powered home uses a BMS to prevent overcharging on sunny days.

It's an embedded electronic system that monitors, manages, and protects battery cells by tracking: Real-World Use Cases: Your Tesla's driving range relies on its BMS to balance 7,000+ lithium-ion cells. A solar-powered home uses a BMS to prevent overcharging on sunny days.

The rapid adoption of residential renewable energy systems has made Battery Management Systems (BMS) critical for safe and efficient power storage. With over 40% of home storage failures linked to inadequate BMS units, choosing the right system demands strategic evaluation. This guide unpacks key.

A battery management system (BMS) is any electronic system that manages a rechargeable battery (cell or battery pack) by facilitating the safe usage and a long life of the battery in practical scenarios while monitoring and estimating its various states (such as state of health and state of).

A Battery Management System (BMS) is the essential brain of a home battery, providing critical protection to ensure safety, longevity, and performance. It constantly monitors key parameters like voltage, current, and temperature, acting as a failsafe to prevent dangerous conditions such as.

A Battery Management System (BMS) is an electronic control unit that monitors and manages rechargeable battery packs to ensure safe operation, optimal performance, and extended lifespan. This sophisticated technology acts as the brain of modern battery systems, protecting against dangerous.

With the growing adoption of electric vehicles (EVs), renewable energy storage, and portable electronic devices, the need for efficient and reliable Battery



Management Systems (BMS) has never been greater. A BMS plays a crucial role in ensuring the optimal performance, safety, and longevity of.

Often called the brain of the battery, the BMS ensures your batteries operate safely, efficiently, and for as long as possible. In this guide, we'll cover: What Is a Battery Management System?

A battery management system (BMS) is an electronic system built into (or added onto) rechargeable.



Home BMS battery management system



[Battery Management Systems \(BMS\): A Complete Guide](#)

A Battery Management System (BMS) is essential for ensuring the safe and efficient operation of battery-powered systems. From real-time monitoring and cell balancing to thermal ...

Guide to Choosing the Best Battery Management Systems (BMS) ...

In this post, we'll narrow it down to three of the most common choices in DIY and off-grid projects: Seplos, JK, and Daly. Each brand serves a different type of user and project ...



Battery management system

A battery management system (BMS) is any electronic system that manages a rechargeable battery (cell or battery pack) by facilitating the safe usage and a long life of the battery in practical scenarios while monitoring and estimating its various states (such as state of health and state of charge), calculating secondary data, reporting that data, controlling its environment, authenticating or balancing it.

[How do Battery Management Systems \(BMS\) ...](#)

A Battery Management System (BMS) keeps your



home battery safe by preventing overheating, overcharging, and short circuits.



News

The rapid adoption of residential renewable energy systems has made Battery Management Systems (BMS) critical for safe and efficient power storage. With over 40% of home storage ...

[What is a Battery Management System \(BMS\)? - ...](#)

There are many BMS design features, with battery pack protection management and capacity management being two essential features. ...



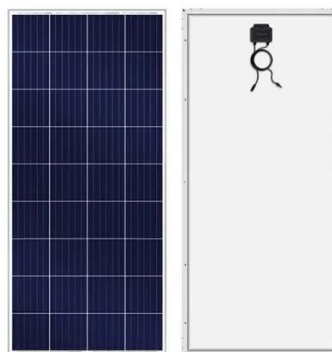
[What is a Battery Management System and why is ...](#)

In a world increasingly powered by batteries--from electric cars to solar farms and smartphones--the Battery Management System (BMS) ...



[Battery Management Systems \(BMS\): A Complete ...](#)

A Battery Management System (BMS) is essential for ensuring the safe and efficient operation of battery-powered systems. From real ...

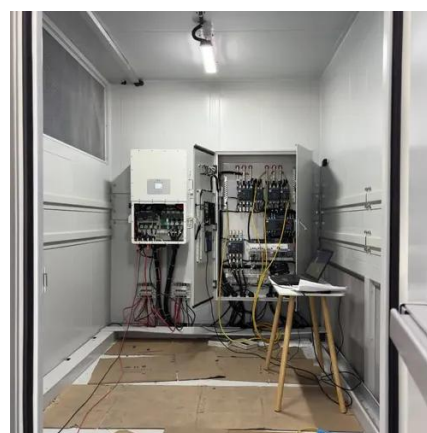


What is a Battery Management System? Complete Guide to BMS ...

A Battery Management System (BMS) is an electronic control unit that monitors and manages rechargeable battery packs to ensure safe operation, optimal performance, and ...

[What Is A BMS \(Battery Management System\)?](#)

Often called the brain of the battery, the BMS ensures your batteries operate safely, efficiently, and for as long as possible. In this guide, we'll cover: What Is a Battery ...



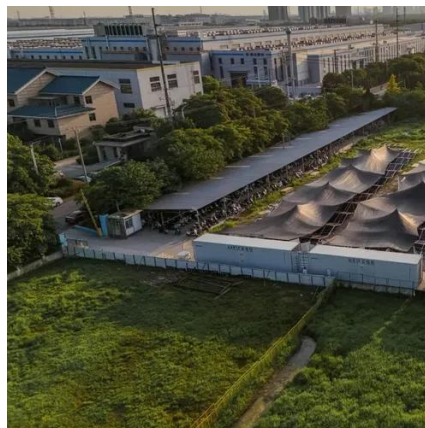
[What is a Battery Management System and why is it needed?](#)

In a world increasingly powered by batteries--from electric cars to solar farms and smartphones--the Battery Management System (BMS) quietly plays a starring role. Often ...



What is a Battery Management System? Complete ...

A Battery Management System (BMS) is an electronic control unit that monitors and manages rechargeable battery packs to ensure ...



What is a Battery Management System (BMS)? - How it Works

There are many BMS design features, with battery pack protection management and capacity management being two essential features. We'll discuss how these two features work here.



What Is A BMS (Battery Management System)?

Often called the brain of the battery, the BMS ensures your batteries operate safely, efficiently, and for as long as possible. In this ...



Battery management system

A battery management system (BMS) is any electronic system that manages a rechargeable battery (cell or battery pack) by facilitating the safe usage and a long life of the battery in ...





[How do Battery Management Systems \(BMS\) Protect Home ...](#)

A Battery Management System (BMS) keeps your home battery safe by preventing overheating, overcharging, and short circuits.



[What Is a Battery Management System? REDARC](#)

What Is a Battery Management System? If you depend on auxiliary batteries to power your adventures, work, or equipment, keeping them charged and healthy is critical. But managing ...

News

The rapid adoption of residential renewable energy systems has made Battery Management Systems (BMS) critical for safe and efficient power ...





Contact Us

For inquiries, pricing, or partnerships:

<https://www.sccd-sk.eu>

Phone: +32 2 808 71 94

Email: info@sccd-sk.eu

Scan QR code for WhatsApp.

