



Home solar light working mode





Overview

Choosing the right operating mode helps you save energy and extend your solar light's battery life. Motion sensor and adaptive brightness modes reduce power use by turning lights on only when needed.

Choosing the right operating mode helps you save energy and extend your solar light's battery life. Motion sensor and adaptive brightness modes reduce power use by turning lights on only when needed.

Adjusting the working mode of your solar lights for winter is critical to address reduced sunlight (lower battery charging) and longer nights (higher energy demand)—two core challenges that can leave lights dim, short-lived, or non-functional if unaddressed. The key is to prioritize battery.

To effectively adjust the solar light mode, consider the following essential points: 1. Understanding the types of solar light modes is crucial, 2. Selecting the appropriate mode for your specific needs can enhance efficiency, 3. Familiarity with the manufacturer's instructions ensures proper.

Operating modes play a vital role in how you get the most out of solar lighting. You can manage brightness and extend battery life by selecting a mode that fits your environment. For example, adaptive brightness control uses sensors to detect movement and adjust light levels, which can lower power.

Pathway and garden solar lights offer an appealing solution for outdoor illumination because they require no external wiring, relying solely on stored energy. This convenience allows for flexible placement and avoids the complexity of trenching or connecting to the home's electrical grid.

Almost every solar light, regardless of size, consists of these four essential components. 1. Solar Panel (The Energy Collector) The solar panel is your light's energy source, and its main job is converting sunlight directly into electrical energy. How It Works (Photovoltaic Effect): This process.

Solar lights are powered by a panel called a photovoltaic cell. This panel collects sunlight and turns it into electricity. That energy is stored in a rechargeable battery built inside the light. When it gets dark, the battery powers the light automatically.



through a sensor. The idea sounds simple.



Home solar light working mode



[How to adjust the solar light mode , NenPower](#)

Solar light modes are designed to optimize performance depending on various environmental and situational factors. Different ...

Can You Use Solar Lights Indoors? Here's What You Need to Know

Discover how to use solar lights indoors for backup, ambiance, and savings with smart setups and proper charging techniques.



[How Solar Lights Work: A Comprehensive Guide](#)

Homeowners use solar lamp for home as a cost-effective and eco-friendly lighting option. These include indoor and outdoor lighting solutions. Cities and municipalities use solar ...

[solar lights and its working method - Hardoll](#)

Although they work best in direct sunlight, solar lights can function in indirect light or on cloudy days. The period and strength of sunshine are



directly proportional to the energy ...



ESS

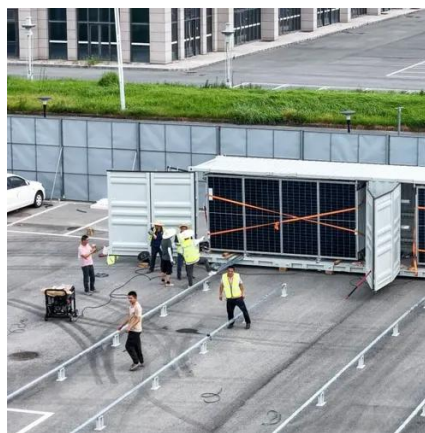


[Can Solar Lights Work Indoors? A Complete Guide](#)

Yes, but their performance depends on proper placement, charging methods, and light source quality. While not as effective as outdoor use, indoor solar lights are still useful for ...

[solar lights and its working method - Hardoll](#)

Although they work best in direct sunlight, solar lights can function in indirect light or on cloudy days. The period and strength of ...



[How Do Solar Lights Work? The Ultimate Guide for 2025](#)

Think of a solar light as your yard's personal mini power plant. It collects energy during the day and releases ...



[How Do Solar Lights Work? The Ultimate Guide for 2025](#)

Think of a solar light as your yard's personal mini power plant. It collects energy during the day and releases light at night, all without complicated wiring or adding to your ...



How Do Solar Lights Work

The next day after sunrise, the solar lights re-enter the charging mode and work in a cycle. The working principle of solar light is to achieve green lighting in the true sense through the perfect ...

When to Adjust the Working Mode of Your Solar Lights for Winter ...

Adjusting the working mode of your solar lights for winter is critical to address reduced sunlight (lower battery charging) and longer nights (higher energy demand)--two core ...



[How to adjust the solar light mode . NenPower](#)

Solar light modes are designed to optimize performance depending on various environmental and situational factors. Different types of solar lights often come equipped with ...



[Can You Use Solar Lights Indoors? Here's What ...](#)

Discover how to use solar lights indoors for backup, ambiance, and savings with smart setups and proper charging techniques.



[How Solar Lights Work: A Comprehensive Guide](#)

Homeowners use solar lamp for home as a cost-effective and eco-friendly lighting option. These include indoor and outdoor lighting ...

[How to Turn On Solar Lights and Keep Them Working](#)

Essential guide to activating and maintaining path and garden solar lights for reliable, long-lasting nighttime illumination.



[How Operating Modes Enhance Solar Lighting Performance](#)

Operating modes in solar lighting technology include features like motion sensor control, light control, and time control. These settings can work together to conserve energy ...



Contact Us

For inquiries, pricing, or partnerships:

<https://www.sccd-sk.eu>

Phone: +32 2 808 71 94

Email: info@sccd-sk.eu

Scan QR code for WhatsApp.

