



# Honiara cylindrical lithium iron phosphate battery





## Overview

---

Cylindrical LiFePO<sub>4</sub> cells are designed with a standard cylindrical shape encased in metal, providing durability and ease of handling. This structure is inherently compact and stable, making these cells well-suited for medium-power applications.

Cylindrical LiFePO<sub>4</sub> cells are designed with a standard cylindrical shape encased in metal, providing durability and ease of handling. This structure is inherently compact and stable, making these cells well-suited for medium-power applications.

Because of their low cost, high safety, low toxicity, long cycle life and other factors, LFP batteries are finding a number of roles in vehicle use, utility-scale stationary applications, and backup power. [7] LFP batteries are cobalt-free. [8] As of September 2022, LFP type battery market share.

Lithium iron phosphate (LiFePO<sub>4</sub>) batteries are known for their high safety, long cycle life, and excellent thermal stability. They come in three main cell types: cylindrical, prismatic, and pouch. Each of these types has distinct characteristics that make them suitable for various applications.

What is a lithium battery energy storage container system?

lithium battery energy storage container system mainly used in large-scale commercial and industrial energy storage applications. We offer OEM/ODM solutions with our 15 years in lithium battery industry. What is a containerized energy.

Melasta Lithium Iron phosphate (LiFePO<sub>4</sub>) cells are one of the best qualities cells available in the market with these technological features 1. High Capacity of single cells upto 6500 mAh. 2. Multiple Shapes with 14500, 18650, 26650, and 32600. 3. Wide Discharge rate range from 1C to 15C. 4. Wide.

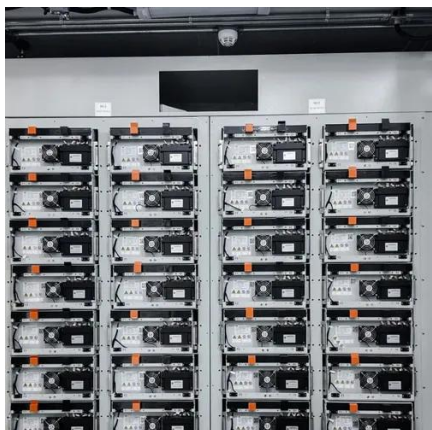
Lithium iron phosphate (LiFePO<sub>4</sub>) batteries are renowned for their exceptional safety, impressive cycle life, and superior thermal stability. They are available in three primary configurations: cylindrical, prismatic, and pouch, each with unique attributes that cater to different applications. Let's.



LiFePO<sub>4</sub> batteries, or lithium iron phosphate batteries, are increasingly recognized for their remarkable safety, longevity, and versatility. Their unique chemistry and design make them a preferred choice in various applications, ranging from electric vehicles to renewable energy storage. But what.



## Honiara cylindrical lithium iron phosphate battery



### [Lifepo4 \(Lithium Iron Phosphate\) Battery Cell](#)

Keheng is an LFP battery manufacturer that produces lithium iron phosphate (LiFePO<sub>4</sub>) Cylindrical and prismatic battery cells.

### Lithium iron phosphate battery

Lithium iron phosphate (LiFePO<sub>4</sub>) batteries, known for their stable operating voltage (approximately 3.2V) and high safety, have been widely used in solar lighting systems.



### Types of LiFePO<sub>4</sub> Battery Cells: Cylindrical, Prismatic, and Pouch

Explore the differences between cylindrical, prismatic, and pouch LiFePO<sub>4</sub> battery cells to choose the right type for your needs.

### [Types of LiFePO<sub>4</sub> Battery Cells: Cylindrical, ...](#)

Explore the differences between cylindrical, prismatic, and pouch LiFePO<sub>4</sub> battery cells to choose the right type for your needs.



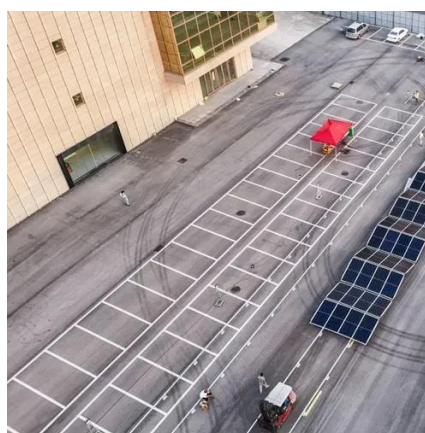
### [What is Cylindrical Lithium Iron Phosphate Battery? Uses](#)

As a versatile energy storage solution, Cylindrical Lithium Iron Phosphate batteries are used in everything from electric bikes to large-scale energy storage systems. Their ability to



### [The Ultimate Guide to Different Types of LiFePO4 ...](#)

LiFePO4 batteries are built on advanced lithium-ion technology. Their basic composition includes a cathode made of lithium ...



### [\[LiFePO4 Battery Types\] Cylindrical vs. Prismatic ...](#)

Cylindrical Cells: These batteries have a round shape and are commonly used in consumer electronics. Their robust design enhances ...





## Why Cylindrical LiFePO4 Cells Are Revolutionizing Energy ...

When evaluating lithium battery options, understanding the strengths of cylindrical LiFePO4 cells compared to alternatives is critical for long-term performance and safety. Here's ...

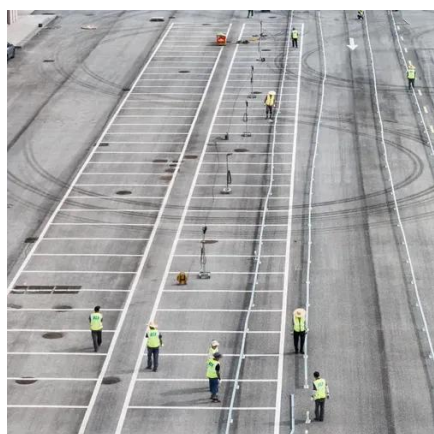


## [The Ultimate Guide to Different Types of LiFePO4 Batteries](#)

LiFePO4 batteries are built on advanced lithium-ion technology. Their basic composition includes a cathode made of lithium iron phosphate (LiFePO4), an anode usually ...

## [HONIARA BATTERY ENERGY STORAGE STATION](#)

It adopts high-safety lithium iron phosphate batteries and is equipped with the province's first integrated system of "new energy + energy storage + digital management and control", with a ...



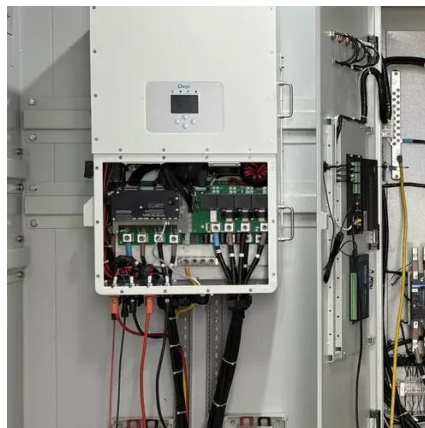
## Exploring LiFePO4 Battery Cell Types: Cylindrical, Prismatic, and ...

They are available in three primary configurations: cylindrical, prismatic, and pouch, each with unique attributes that cater to different applications. Let's delve deeper. into ...



## Lifepo4 (Lithium Iron Phosphate) Battery Cell , Keheng Customized

Keheng is an LFP battery manufacturer that produces lithium iron phosphate (LiFePO4) Cylindrical and prismatic battery cells.



### [LiFe-Shenzhen Melasta Battery Co., Ltd](#)

The tubular cylindrical shape can withstand high internal pressures without collapsing. Melasta produces multiple sizes and capacities according to ...

### [LiFe-Shenzhen Melasta Battery Co., Ltd](#)

The tubular cylindrical shape can withstand high internal pressures without collapsing. Melasta produces multiple sizes and capacities according to the customer requirement.



### [\[LiFePO4 Battery Types\] Cylindrical vs. Prismatic vs. Pouch](#)

Cylindrical Cells: These batteries have a round shape and are commonly used in consumer electronics. Their robust design enhances durability and heat dissipation, making ...



## Contact Us

---

For inquiries, pricing, or partnerships:

<https://www.sccd-sk.eu>

Phone: +32 2 808 71 94

Email: [info@sccd-sk.eu](mailto:info@sccd-sk.eu)

Scan QR code for WhatsApp.

