



Household solar inverter input voltage





Overview

Input voltage indicates the DC voltage required to operate the inverter. Inverters generally have an input voltage of 12V, 24V, or 48V. The inverter selected must match the power source, such as batteries or solar panels. Solar and EV systems usually use higher input voltages .

Input voltage indicates the DC voltage required to operate the inverter. Inverters generally have an input voltage of 12V, 24V, or 48V. The inverter selected must match the power source, such as batteries or solar panels. Solar and EV systems usually use higher input voltages .

Inverters are designed to operate within a voltage range, which is set by the manufacturer's specification datasheet. In addition, the datasheet specifies the maximum voltage value of the inverter. Both the maximum voltage value and operating voltage range of an inverter are two main parameters.

The input voltage of a solar inverter refers to the voltage range it can accept from the solar panels. This range is critical for the inverter to efficiently convert the DC electricity from the photovoltaic (PV) array into usable AC power. The input voltage is a dynamic parameter that varies based.

Find the ideal DC input voltage (12V, 24V, or 48V) for your inverter setup based on load power, current limits, and efficiency to ensure optimal wiring and system safety. Formula used: $DC\ Current = Power / (Voltage \times Efficiency)$. The recommended system voltage is the lowest voltage where current \leq .

Solar inverter specifications are crucial for optimizing the performance of your solar panel system. Input specifications include maximum DC input voltage, MPPT voltage range, maximum DC input current, start-up voltage, and maximum number of DC inputs. Output specifications cover nominal AC output.

The input specifications of an inverter concern the DC power originating from the solar panels and how effectively the inverter can handle it. The maximum DC input voltage is all about the peak voltage the inverter can handle from the connected panels. The value resonates with the safety limit for.

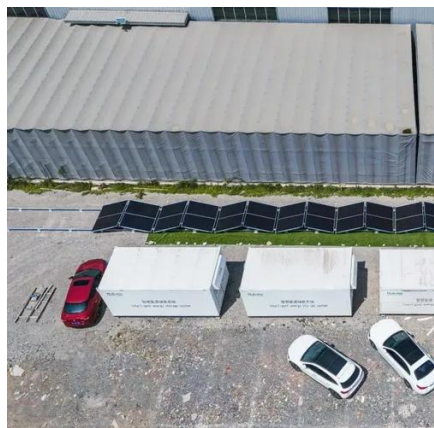
Input voltage indicates the DC voltage required to operate the inverter. Inverters



generally have an input voltage of 12V, 24V, or 48V. The inverter selected must match the power source, such as batteries or solar panels. Solar and EV systems usually use higher input voltages, such as 48V or more.



Household solar inverter input voltage



[How To Read And Interpret An Inverter Specification](#)

Input voltage indicates the DC voltage required to operate the inverter. Inverters generally have an input voltage of 12V, 24V, or 48V. The inverter selected must match the power source, ...

[A comprehensive guide to inverter voltage](#)

Input voltage selection: The DC input voltage of the inverter should match the output voltage of your batteries or solar panels. For example, if you are using a 12V battery ...



[Solar Integration: Inverters and Grid Services Basics](#)

Fundamentally, an inverter accomplishes the DC-to-AC conversion by switching the direction of a DC input back and forth very rapidly. As a result, a DC input becomes an AC output. In ...

Crucial Start-Up Voltage for Solar Inverters , Fenice Energy

The input voltage of a solar inverter refers to the voltage range it can accept from the solar panels. This range is critical for the inverter to efficiently



convert the DC electricity ...

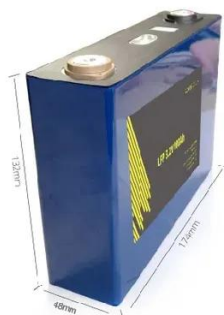


Interpreting inverter datasheet and main parameters , AE 868

Both the maximum voltage value and operating voltage range of an inverter are two main parameters that should be taken into account when stringing the inverter and PV array. PV ...

[Inverter DC Input Voltage Calculator](#)

Use our Inverter DC Input Voltage Calculator to determine the best DC voltage (12V, 24V, or 48V) for your solar inverter. Optimize wiring, efficiency, and system safety with load and current ...



[How to Read Solar Inverter Specifications](#)

The maximum DC input voltage is all about the peak voltage the inverter can handle from the connected panels. The value resonates with the safety limit for the inverter.



[How many volts is suitable for solar inverter , NenPower](#)

Essentially, the inverter's input voltage range must be compatible with the solar panels' output. Most residential panels generate between 12-40 volts DC under regular ...



[How to Read Solar Inverter Specifications](#)

Solar inverter specifications are crucial for optimizing the performance of your solar panel system. Input specifications include maximum DC input voltage, MPPT voltage range, maximum DC ...

[Mastering Solar Inverter Voltage for Maximum Efficiency](#)

Low voltage inverters--typically operating at 12V or 24V--are often used in smaller setups such as residential or portable solar applications. They are easy to install and safer to ...





Contact Us

For inquiries, pricing, or partnerships:

<https://www.sccd-sk.eu>

Phone: +32 2 808 71 94

Email: info@sccd-sk.eu

Scan QR code for WhatsApp.

