



How big a solar energy storage cabinet should be





How big a solar energy storage cabinet should be



BIG , Bjarke Ingels Group

BIG has grown organically over the last two decades from a founder, to a family, to a force of 700. Our latest transformation is the BIG LEAP: Bjarke Ingels Group of Landscape, Engineering, ...

BIG , Bjarke Ingels Group

Throughout the building, warm wood cladding and concrete floors are accented with the school's signature colors of red and gold. The BIG-designed interiors are designed to accommodate ...



[Jinji Lake Pavilion , BIG , Bjarke Ingels Group](#)

Our latest transformation is the BIG LEAP: Bjarke Ingels Group of Landscape, Engineering, Architecture, Planning and Products. A plethora of in-house perspectives allows us to see ...

[Hamburg State Opera , BIG , Bjarke Ingels Group](#)

Shaped by the movement of the water, the surrounding park is designed by BIG Landscape and manages storm surges through sloping



terraces, vegetated dunes, and wetland gardens that ...

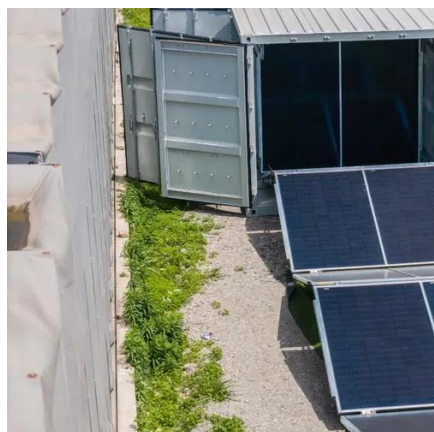
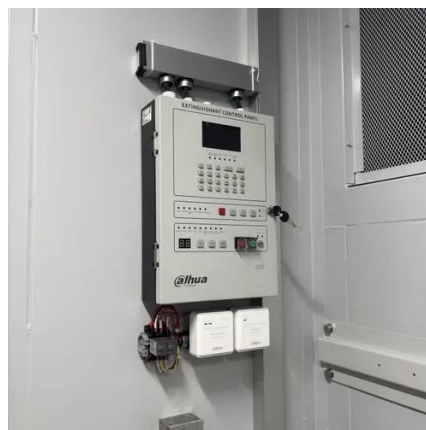


[Biosphere , BIG , Bjarke Ingels Group](#)

BIG's aim was to amplify Treehotel's focus on sustainability and natural tourism, and create a resilient design in a region with strong seasonal climatic contrasts.

[WeGrow NYC , BIG , Bjarke Ingels Group](#)

BIG has grown organically over the last two decades from a founder, to a family, to a force of 700. Our latest transformation is the BIG LEAP: Bjarke Ingels Group of Landscape, Engineering, ...



Bjarke Ingels Group

Our latest transformation is the BIG LEAP: Bjarke Ingels Group of Landscape, Engineering, Architecture, Planning and Products. A plethora of in-house perspectives allows us to see ...



[The Mountain , BIG , Bjarke Ingels Group](#)

The Mountain is a hybrid combining the splendors of a suburban lifestyle: a house with a big garden where children can play, with the metropolitan qualities of a penthouse view and a ...



[Freedom Plaza , BIG , Bjarke Ingels Group](#)

Freedom Plaza will extend BIG's contribution to New York City's waterfront, alongside adjacent coastal projects that include the East Side Coastal Resiliency project, the Battery Park City ...

[The Spiral , BIG , Bjarke Ingels Group](#)

Developed by Tishman Speyer and built by Turner, the commercial high-rise was designed by BIG in collaboration with Adamson Associates and structural engineer WSP Cantor Seinuk. ...





Contact Us

For inquiries, pricing, or partnerships:

<https://www.sccd-sk.eu>

Phone: +32 2 808 71 94

Email: info@sccd-sk.eu

Scan QR code for WhatsApp.

