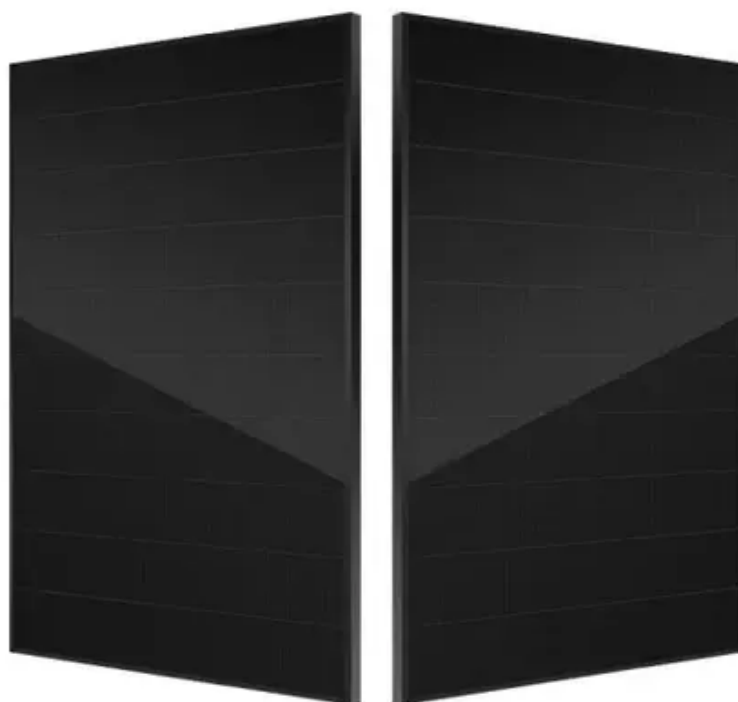




How big an inverter is enough for outdoor travel





Overview

The rule of thumb is to choose an inverter with a capacity about 25-30% higher than your total wattage requirement. This extra capacity accounts for any initial surge power some devices might require when they start up.

The rule of thumb is to choose an inverter with a capacity about 25-30% higher than your total wattage requirement. This extra capacity accounts for any initial surge power some devices might require when they start up.

An inverter converts Direct Current (DC) from your car battery or solar setup into Alternating Current (AC), which most household appliances use. Think of it as the bridge between your camping gear and the power source. Why Do You Need an Inverter?

Camping is about getting away from it all, but.

Your inverter is the heart of your RV's electrical system. It transforms DC power from your batteries into AC power for your appliances. It also acts as a charger when plugged in at the campsite. The first step with an RV inverter size calculator is to tally up the wattage of all devices you plan.

Struggling to power your RV gadgets off-grid?

Learn how to choose the perfect inverter size for your 2025 adventures — no electrical degree required. Includes real-world examples and solar integration tips! So, you've traded your stationary home for four wheels and a view—nice move! But now you're.

Choosing the right inverter size is crucial—too small, and your appliances won't work; too large, and you'll waste money. This guide will help you determine the ideal inverter size for your specific needs, whether for home backup, RV living, or off-grid solar power. 1. Introduction: Why Inverter.

The possession of the right inverter ensure you have enough power to run all your essential appliances and gadgets without overloading the system. Whether you're enjoying the outdoors or traveling long distances, having a well-calculated inverter can provide peace of mind and convenience. In this.



An RV inverter is a device that converts 12V DC (direct current) power from your RV's batteries into 120V AC (alternating current) power—the same type of electricity you get from household outlets or shore power. This allows you to run everyday appliances and electronics, like your microwave. What size RV inverter do I Need?

If you don't want to worry about this, look at your large loads and oversize the inverter so that you have capacity. Most inverters will range between 1,000 watts and 5,000 watts, and you'll probably need an inverter size somewhere in the middle. Many wonder what size inverter they need for their RV and estimate something far larger than necessary.

How do I choose the right inverter size?

Here is our last bit of advice on how to select the correct inverter size: Check our inverter size chart. List all your appliances in the function of their power output. Apply our inverter size formula. Do not exceed 85% of your inverter's maximum power continuously. Oversize your inverter for extra appliances in the future.

How much power does an inverter need for camping?

Most inverters used for camping range between 1000 and 5000 watts. You are probably going to need one with a size somewhere in the middle. Estimating the power needs of your RV can be determined by carrying out some calculations. What Does an Inverter Do for Camping?

.

What are the different solar inverter sizes?

Solar generators range in size from small generators for short camping trips to large off-grid power systems for a boat or house. Consequently, inverter sizes vary greatly. During our research, we discovered that most inverters range in size from 300 watts up to over 3000 watts. In this article, we guide you through the different inverter sizes.



How big an inverter is enough for outdoor travel



What Size Inverter Generator Do You Need? Wattage and Power ...

Most campers are well served by 2000-2400W, RV owners typically choose 3500-4500W, and homeowners often prefer 4000-6500W.

What Size Inverter Do I Need for My RV?

First and foremost, you'll need to determine which devices and appliances you want to power at the same time. This will help you decide which size inverter you'll actually ...



What Size Inverter Do You Need? A Complete Guide for Home, ...

Choosing the right inverter size is crucial--too small, and your appliances won't work; too large, and you'll waste money. This guide will help you determine the ideal inverter ...

How to Choose the Right RV Inverter Size in 2025 ...

Learn how to choose the perfect inverter size for your 2025 adventures -- no electrical degree required. Includes real-world examples ...



[Inverter Size Calculator , Find Your Perfect Power Match](#)

The inverter size calculator takes the guesswork out of choosing the right inverter. Simply select your appliances below, and you'll instantly see the inverter size you need.

[What Size Inverter Do I Need for My RV?](#)

First and foremost, you'll need to determine which devices and appliances you want to power at the same time. This will help you ...



What Size Inverter Do I Need for Camping? (Including Examples)

Discover the perfect inverter size for your next camping adventure. Learn how to calculate your power needs, choose between pure and modified sine wave inverters, and explore practical ...



FREE

Welcome to our RV Inverter Size calculator, a free tool designed to help you estimate the size of the inverter you will need to supply the 110V power required by your RV ...



[The Only Inverter Size Chart You'll Ever Need](#)

During our research, we discovered that most inverters range in size from 300 watts up to over 3000 watts. In this article, we guide you through the different inverter sizes. ...



[What Size Inverter Do I Need For My Camper?](#)

This article helps you understand the right size of inverter you need for your camper by making the necessary calculations to estimate your power needs.

Lithium battery parameters

Product capacity: 100Ah

Product size: 135*197*35mm

Product weight: 1.82kg

Product voltage: 3.2V

internal resistance: within 0.5



What Size of Inverter is Good for RV? -- EASUN POWER Official ...

In order to adequately power an entire RV, you may need an inverter with a capacity between 3000 to 4000 watts. If you plan to operate multiple high-power devices like ...





What Size Inverter Do I Need for Camping?

Discover the perfect inverter size for your next camping adventure. Learn how to calculate your power needs, choose between pure and modified ...



What Size of Inverter is Good for RV? -- EASUN ...

In order to adequately power an entire RV, you may need an inverter with a capacity between 3000 to 4000 watts. If you plan to ...

How to Choose the Right RV Inverter Size in 2025 , Vatrer Power

Learn how to choose the perfect inverter size for your 2025 adventures -- no electrical degree required. Includes real-world examples and solar integration tips!





Contact Us

For inquiries, pricing, or partnerships:

<https://www.sccd-sk.eu>

Phone: +32 2 808 71 94

Email: info@sccd-sk.eu

Scan QR code for WhatsApp.

