



How big an inverter is suitable for a family car





Overview

“Most family cars do best with 1,000W inverters. They handle common devices without taxing the alternator.” – EK SOLAR Technical Team Your car battery’s ampere-hour (Ah) rating determines runtime. A 60Ah battery can theoretically support a 600W load for 1 hour ($600W \div 12V = 50A$; 60Ah).

“Most family cars do best with 1,000W inverters. They handle common devices without taxing the alternator.” – EK SOLAR Technical Team Your car battery’s ampere-hour (Ah) rating determines runtime. A 60Ah battery can theoretically support a 600W load for 1 hour ($600W \div 12V = 50A$; 60Ah).

Meta Description: Wondering how big an inverter you need for your family car?

Learn how to calculate wattage requirements, avoid common pitfalls, and pick the perfect inverter for road trips and daily use. Meta Description: Wondering how big an inverter you need for your family car?

Learn how to.

To determine the maximum size of an inverter that your car can handle, you need to know its electrical system’s capacity. Your car’s electrical system consists of the battery, alternator, and wiring. The battery is the primary source of power, while the alternator recharges the battery and provides.

A car inverter is a convenient car power converter that can convert 12V DC power into 220V AC power, which is the same as the main power, for general electrical appliances. Car inverters bring many conveniences to daily life and are widely used, so choosing the right inverter size is very.

An inverter is a device that turns the power from a 12 volt DC battery, like the one in your car or truck, into the 120 volt AC power that runs all of the electronics in your house. You can use one of these devices to power all sorts of devices in your car, but it's important to figure out how big.

If you’re looking to power your home with a car inverter, you may be wondering how big of an inverter you’ll need. The answer depends on a few factors, including the size of your home and the type of appliances you plan to run. Most homes will



require at least a 3,000 watt inverter, but if you have.

Typically, a 12-volt car battery can support an inverter with a power range of about 150 watts to 1500 watts. Please note, however, that car batteries are not suitable for driving high power inverters for extended periods of time, which may cause damage to the battery. When using a high power. How much inverter power can a car battery support?

There is a theoretical limit to the amount of inverter power that can be supported by an automotive battery. Theoretically, the maximum supported inverter power can be calculated by multiplying the battery capacity (Ah) by the battery voltage (V) multiplied by the discharge multiplier (C-rate).

Can a 12 volt car battery support a high power inverter?

Typically, a 12-volt car battery can support an inverter with a power range of about 150 watts to 1500 watts. Please note, however, that car batteries are not suitable for driving high power inverters for extended periods of time, which may cause damage to the battery.

Can a high power inverter be used on a car battery?

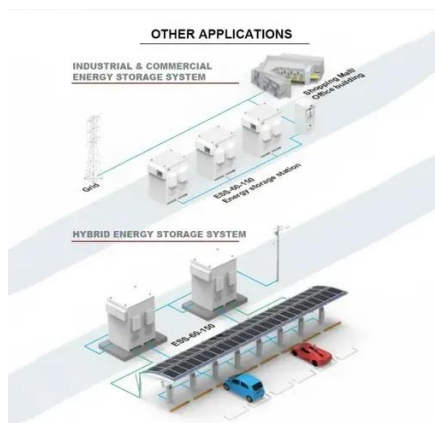
When using a high power inverter, it may be necessary to consider a battery with additional deep cycles to ensure that the car battery is not damaged by continuous discharge. For standard automotive batteries, it is recommended that inverter power not exceed 600 watts for safety and battery life.

Can you use multiple inverters on a car?

Using multiple inverters can increase the load on your car's electrical system, which can cause it to exceed its capacity and potentially cause damage. Instead, you should choose a single inverter that can handle the total power requirements of all your devices.



How big an inverter is suitable for a family car



How Big of an Inverter Can My Car Handle: Explained with Expert ...

Experts recommend that you select an inverter that's no more than 80% of your car's electrical system capacity.

[What Size of Car Inverter do I Need? , inverter](#)

Despite the increase in power, the size does not necessarily need to be large, because some high-efficiency car inverters can provide high power output while maintaining a ...



Installing a Power Inverter in Your Car: Step-by-Step Guide for ...

It's wise to include a buffer by choosing an inverter with a capacity about 20-25% higher than the computed total wattage to prevent overloading. Selecting the correct wire ...

[How Big of an Inverter Can My Car Battery Handle?](#)

This guide is designed to help you make an informed choice about how much power you can use from your car's battery to power an inverter,



taking into account a number ...

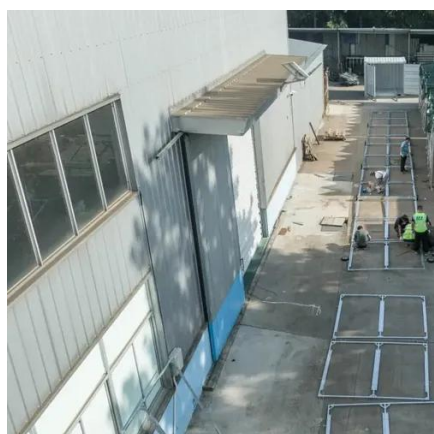


[How Big of an Inverter Can My Car Battery Handle?](#)

This guide is designed to help you make an informed choice about how much power you can use from your car's battery to power an ...

[The Ultimate Guide to Choosing the Power Inverter for Car](#)

Discover how to select the best power inverter for car with our comprehensive guide. Find tips, top picks, and features for on-the-go energy!



[How Big of an Inverter Can My Car Handle: ...](#)

Experts recommend that you select an inverter that's no more than 80% of your car's electrical system capacity.



[How Big of an Inverter Can My Car Handle](#)

When shopping for an inverter, pay close attention to the maximum continuous watts (the amount of power it can provide without shutting down) and surge watts (the amount ...



How to Choose the Right Size Inverter for Your Family Car: A ...

Meta Description: Wondering how big an inverter you need for your family car? Learn how to calculate wattage requirements, avoid common pitfalls, and pick the perfect inverter for road ...

[How To Choose The Right Power Inverter For Your Car](#)

In reality, purchase a power inverter for your car that is rated at 20% more watts than you'll need. How many watts of power does your device need? This is easy to find. Just ...



[What Size of Car Inverter do I Need? , inverter](#)

Despite the increase in power, the size does not necessarily need to be large, because some high-efficiency car inverters can provide ...



Find the Right Inverter Size: How Big An Inverter Do You need?

When shopping for an inverter, pay close attention to the maximum continuous watts (the amount of power it can provide without ...



Find the Right Inverter Size: How Big An Inverter Do You need?

Once you've figured out what devices you want to plug into your inverter, you can dig right in and figure out the right size inverter to buy. As an example, let's say that you want ...

What size inverter can you run off a car battery?

In practice, it is recommended to keep inverter loads under 600 watts for general use to avoid excessive battery discharge, heat buildup, and potential damage. Higher loads ...

ESS





Contact Us

For inquiries, pricing, or partnerships:

<https://www.sccd-sk.eu>

Phone: +32 2 808 71 94

Email: info@sccd-sk.eu

Scan QR code for WhatsApp.

