



# How big an inverter should I use for a 150w household appliance





## Overview

---

Choose an inverter with at least 600W capacity (to cover the fridge's 800W starting surge). Inverters come in sizes from 500W (for small cabins) to 5000W+ (for large homes). Here's a quick guide: 500- 1000W Inerter: Best for tiny homes, RVs, or powering 2-3 small devices (lights .

Choose an inverter with at least 600W capacity (to cover the fridge's 800W starting surge). Inverters come in sizes from 500W (for small cabins) to 5000W+ (for large homes). Here's a quick guide: 500- 1000W Inerter: Best for tiny homes, RVs, or powering 2-3 small devices (lights .

Simply select your appliances below, and you'll instantly see the inverter size you need. Standard 12v models top out around 3000w (24v/48v ~ 4000w). To proceed: Upgrade to a higher-voltage system (24 V/48 V) for a larger inverter. Consider a higher-voltage system for a bigger inverter. Pick your.

How to determine what size inverter I need?

Before we go any further, we highly recommend that you choose a pure sine wave inverter. This type of inverter delivers high-quality electricity, similar to your utility company. This way, none of your appliances run the risk of being damaged. Now, when.

In general, a 3000W to 5000W inverter works well for most homes, but the exact size depends on factors like household appliances, total power consumption, and battery setup. In this guide, we'll explain how to calculate the right inverter size for home backup power and even for solar power systems.

Choosing the right size for your home power inverter is essential for ensuring that your household appliances run efficiently and that your energy system is reliable. A properly sized inverter helps prevent overloads and maximizes energy efficiency. In Srne guide, we'll walk you through how to.

The first step to choosing the right inverter is knowing exactly how much power your home uses. Here's how: Start by listing every device you want to power during an outage. Prioritize essentials: Pro Tip: Skip non-essentials like air conditioners or water heaters unless you're planning for.



Knowing your AC power needs is key for selecting the right inverter. WattBuild's calculator lets you list the devices you want to power and then tells you the key stats you need to know, as well as showing which products on the market are compatible. Use the Add Device section to begin adding your. What size inverter do I Need?

The inverter size calculator takes the guesswork out of choosing the right inverter. Simply select your appliances below, and you'll instantly see the inverter size you need. Standard 12v models top out around 3000w (24v/48v ~ 4000w). To proceed: Upgrade to a higher-voltage system (24 V/48 V) for a larger inverter.

How much power does an inverter need?

For example, if your total running wattage is 2200W and your surge wattage adds another 400W, your total power requirement is 2600W. Inverters typically operate at an efficiency of around 85%-95%. To ensure your inverter can handle your total load, divide your total power consumption by the inverter's efficiency.

What are the different solar inverter sizes?

Solar generators range in size from small generators for short camping trips to large off-grid power systems for a boat or house. Consequently, inverter sizes vary greatly. During our research, we discovered that most inverters range in size from 300 watts up to over 3000 watts. In this article, we guide you through the different inverter sizes.

How to choose a power inverter?

Second, select an inverter. For this example, you will need a power inverter capable of handling 4500 watts. The continuous power requirement is actually 2250 but when sizing an inverter, you have to plan for the start up so the inverter can handle it. Third, you need to decide how long you want to run 2250 watts.



## How big an inverter should I use for a 150w household appliance



### [The Only Inverter Size Chart You'll Ever Need](#)

In general, a 3000W to 5000W inverter works well for most homes, but the exact size depends on factors like household appliances, total power consumption, and battery ...

### [How to Choose the Right Inverter Size for Your Home](#)

Choosing the right inverter size comes down to knowing your power needs, matching battery capacity, and prioritizing safety features.



### [How to Size a Home Power Inverter for Your ...](#)

Provide detailed instructions on how to calculate the appropriate size of a power inverter based on household power ...

## What Size Inverter Do I Need?

Finding the proper inverter size for your needs is as simple as adding together the necessary wattages of the items that you're looking to power.



### [What Size Inverter Do You Need for Your Home? , Renogy US](#)

When choosing the size of the inverter, you need to consider several things, including the continuous power or running wattage of all appliances and surge capacity or the highest ...



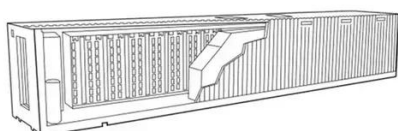
### [The Only Inverter Size Chart You'll Ever Need](#)

We have created a comprehensive inverter size chart to help you select the correct inverter to power your appliances.



### **Inverter Size Calculator**

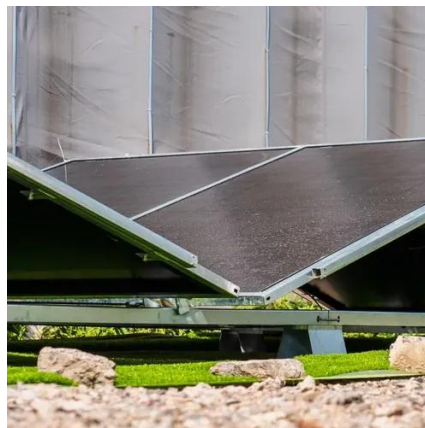
WattBuild's calculator lets you list the devices you want to power and then tells you the key stats you need to know, as well as showing which ...





## [What Size Inverter Do I Need? A Complete Guide for DIY ...](#)

Correct inverter sizing determines how much power from your solar panels or battery bank can be safely delivered to your home's alternating current (AC) appliances. If your ...



## [Inverter Size Calculator , Find Your Perfect Power Match](#)

The inverter size calculator takes the guesswork out of choosing the right inverter. Simply select your appliances below, and you'll instantly see the inverter size you need.

## **Inverter Size Calculator**

WattBuild's calculator lets you list the devices you want to power and then tells you the key stats you need to know, as well as showing which products on the market are compatible. Use the ...



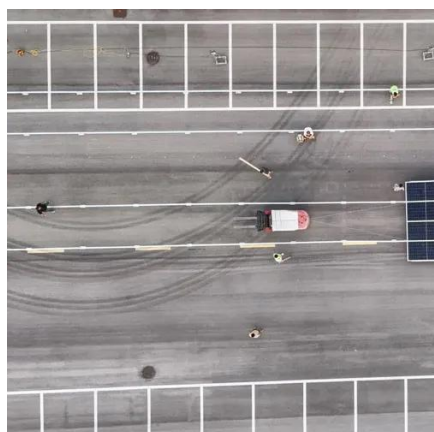
## **How to Size a Home Power Inverter for Your Needs: A Step-by ...**

Provide detailed instructions on how to calculate the appropriate size of a power inverter based on household power requirements. Include formulas, examples, and ...



## [What Size Power Inverter Is Needed for a House \[Full Guide\]](#)

In general, a 3000W to 5000W inverter works well for most homes, but the exact size depends on factors like household appliances, total power consumption, and battery ...



## **What Size Inverter Do You Need? A Complete Guide for Home, ...**

Choosing the right inverter size is crucial--too small, and your appliances won't work; too large, and you'll waste money. This guide will help you determine the ideal inverter ...



## Contact Us

---

For inquiries, pricing, or partnerships:

<https://www.sccd-sk.eu>

Phone: +32 2 808 71 94

Email: [info@sccd-sk.eu](mailto:info@sccd-sk.eu)

Scan QR code for WhatsApp.

