



How big an inverter should I use for my battery





Overview

What is the recommended battery size for an inverter?

Interpreting Results: Once you input the required data, the calculator will generate the recommended battery size in ampere-hours (Ah). For instance, if your power consumption is 500 watts, the usage time is 4 hours, and the inverter efficiency is 90%, the calculator might suggest a battery size of approximately 222 Ah.

What wattage Inverter should I use?

Match the inverter's continuous wattage rating to the battery's discharge capacity. For a 12V 200Ah battery (2.4kWh), a 2000W inverter is ideal. Formula: Inverter Wattage \leq (Battery Voltage \times Ah Rating \times 0.8). Factor in surge power needs but prioritize sustained loads.

Why should you use the calculate battery size for inverter calculator?

Using the Calculate Battery Size for Inverter Calculator can significantly streamline your power management process. This tool is particularly beneficial in scenarios where precise power estimation is critical, such as designing renewable energy systems, ensuring backup power in off-grid locations, or optimizing battery usage for cost efficiency.

What size solar inverter do I Need?

Inverter Size: 1000W (with 2000W surge), 12V compatible Adding Load and Battery Expansion If you plan to add more batteries or higher AC loads in the future, select a modular inverter and oversize your solar system slightly to accommodate growth.



How big an inverter should I use for my battery

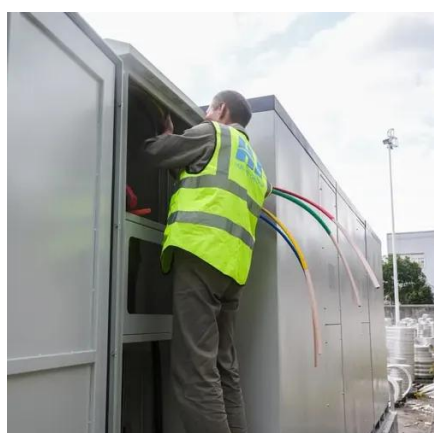


[How to Calculate the Right Battery Size for Your ...](#)

To help you find the perfect match, here's a step-by-step guide to calculate battery size based on your power needs and inverter specifications. Step ...

[Determining the Solar and Inverter Size Needed to ...](#)

If your inverter is underpowered, it may not handle your load. This guide will walk you through everything you need to know to calculate ...



[Can an Inverter Be Too Big for Your Battery System?](#)

Match the inverter's continuous wattage rating to the battery's discharge capacity. For a 12V 200Ah battery (2.4kWh), a 2000W inverter is ideal. Formula: Inverter Wattage \leq (Battery ...

[Inverter Size Calculator , Find Your Perfect Power Match](#)

Minimum Inverter Size: The smallest inverter that can handle your highest-wattage appliance. Ideal if you run one device at a time - or several devices



whose combined draw ...



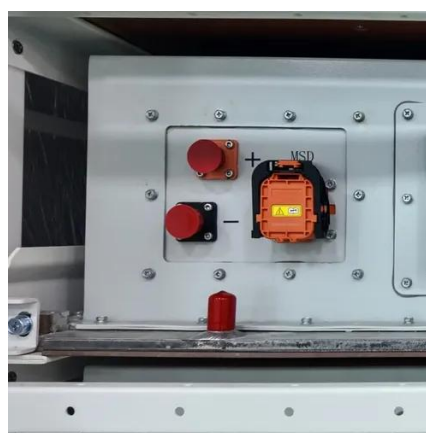
[What Size Inverter Do I Need? A Comprehensive Guide to ...](#)

Proper inverter sizing affects energy efficiency, system longevity, and whether your inverter works well with your battery setup. This inverter sizing guide will take you through the ...



[Calculate Battery Size for Inverter Calculator](#)

By inputting critical parameters such as power consumption, inverter efficiency, and desired usage time, this calculator provides a ...



Inverter Sizing: Can Your Inverter Be Too Big For Your Battery ...

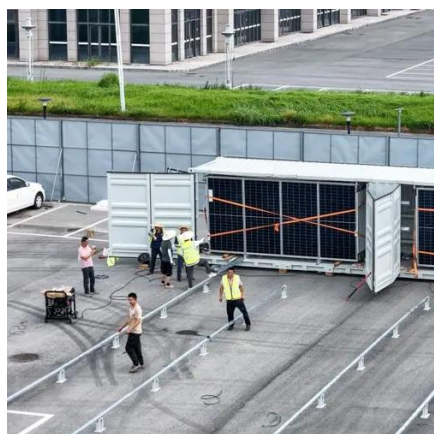
No, your inverter size should not exceed your battery bank capacity. Using an inverter that is too large for the battery bank can lead to inefficient performance and reduced ...





How to Calculate the Right Battery Size for Your Inverter System

To help you find the perfect match, here's a step-by-step guide to calculate battery size based on your power needs and inverter specifications. Step 1: Determine Your Power Requirements



[What Size Inverter Do You Need for Your Home?](#)

If you live in a small apartment, a 250 VA inverter coupled with a 100 Ah battery will be a perfect choice to power all basic appliances, including ...

[What Size Inverter Do You Need for Your Home? , Renogy US](#)

If you live in a small apartment, a 250 VA inverter coupled with a 100 Ah battery will be a perfect choice to power all basic appliances, including television, lights, and fans.



1075KWHH ESS

Determining the Solar and Inverter Size Needed to Charge a Battery

If your inverter is underpowered, it may not handle your load. This guide will walk you through everything you need to know to calculate the optimal Size of your solar and ...



Battery and Inverter Sizing Guide 2025: How to Match Solar ...

Learn how to size and pair a battery with your solar inverter in 2025. Discover key ratios, examples, and Growatt solutions for optimal solar + storage system design.



What Size Inverter Do I Need? A Comprehensive Guide to Inverter ...

Proper inverter sizing affects energy efficiency, system longevity, and whether your inverter works well with your battery setup. This inverter sizing guide will take you through the ...

[Calculate Battery Size for Inverter Calculator](#)

By inputting critical parameters such as power consumption, inverter efficiency, and desired usage time, this calculator provides a precise battery size recommendation ...



What size inverter do I need?

Sizing your inverter depends on your load profile, environmental factors, and inverter specs.



Contact Us

For inquiries, pricing, or partnerships:

<https://www.sccd-sk.eu>

Phone: +32 2 808 71 94

Email: info@sccd-sk.eu

Scan QR code for WhatsApp.

