



How big an inverter should be installed in a solar power station

5 Years warranty





Overview

This guide breaks down what size solar inverter you actually need—so your setup runs smooth, efficient, and stress-free from day one. **What Size Solar Inverter Do I Need?**

A solar inverter should closely match your solar system's output in kW—typically within 80% to 120% of your total.

This guide breaks down what size solar inverter you actually need—so your setup runs smooth, efficient, and stress-free from day one. **What Size Solar Inverter Do I Need?**

A solar inverter should closely match your solar system's output in kW—typically within 80% to 120% of your total.

In this guide, we share 3 easy steps on how to size a solar inverter correctly. We explain the key concepts that determine solar inverter sizing including your power needs, the type and number of solar panels you need, and the length of your wires. **What Does A Solar Inverter Do?**

Solar inverters.

This guide breaks down what size solar inverter you actually need—so your setup runs smooth, efficient, and stress-free from day one. **What Size Solar Inverter Do I Need?**

A solar inverter should closely match your solar system's output in kW—typically within 80% to 120% of your total panel capacity.

How big an inverter should a photovoltaic power station use How big an inverter should a photovoltaic power station use How do I choose a solar inverter size?

To calculate the ideal inverter size for your solar PV system, you should consider the total wattage of your solar panels and the specific.

String inverters are cost-effective and suitable for large-scale installations where simplicity and overall system efficiency are prioritized. However, monitoring



capabilities typically apply at the string level rather than at the individual panel level. They also tend to perform worse in shaded.

Choosing the right solar inverter size is critical—and one of the most common questions: what solar inverter size do I need?

Whether you are installing a rooftop system in California, powering a remote cabin in Alberta, or sizing for a community center in Rajasthan, getting it right means.

Choosing the right solar inverter size isn't just a technical detail—it's one of the most important steps in designing an efficient, cost-effective solar energy system. A perfectly sized solar inverter ensures you're maximizing the energy your panels produce, avoiding unnecessary losses, and. How do you size a solar inverter?

Below, we'll walk through the three essential steps for sizing your solar inverter properly. Your first step is understanding how much power your solar panels will produce—this is known as your solar array size. It's typically measured in kilowatts (kW) and calculated by summing up the wattage of all your solar panels.

What size inverter do I Need?

Inverters come in different sizes starting from as little as 125 watts. The typical inverter sizes used for residential and commercial applications are between 1 and 10kW with 3 and 5kW sizes being the most common. With such an array of options, how do you find the right size for you?

An inverter works best when close to its capacity.

How do I choose a solar inverter?

Knowing your array size allows you to choose an inverter that can handle that production efficiently—without over- or under-investing in capacity. The second step is understanding your system's DC-to-AC ratio, one of the most important metrics when sizing a solar inverter.

How much power does a solar inverter need?

First up—your solar panel output. If your panels produce 6kW, your inverter should match that. or come close. You don't need a perfect 1:1 ratio, but don't underpower it either. That's like putting cheap tyres on a Ferrari.



How big an inverter should be installed in a solar power station



[Everything You Need to Know About Inverter ...](#)

It is best when the total capacity of your solar panels (DC size) is slightly bigger than the peak capacity of your inverters (AC size). To set ...

[What Size Solar Inverter Do I Need? A Quick Sizing Guide](#)

Sizing Rule: Your inverter's peak capacity must exceed the highest surge demand. Example: If your total running load is 500 W but your AC needs 2,400 W surge, choose an inverter with \geq ...



[Solar Panel Inverter Size Calculator: Know What You Need , Angi](#)

Homeowners can size slightly down or up to find the right fit for their setup. Your solar inverter size doesn't need to match the DC rating of your solar panel array exactly. ...

[How to Choose the Right Size Solar Inverter: Step-by-Step with ...](#)

Wondering what size solar inverter do I need for your solar system? This guide walks you through calculating inverter size based on panel capacity,



power usage, and safety ...



[What Size Solar Inverter Do I Need? Experts Break It Down](#)

What Size Solar Inverter Do I Need? A solar inverter should closely match your solar system's output in kW--typically within 80% to 120% of your total panel capacity.

[Solar Inverter Sizing Guide: How to Size Your Inverter](#)

Learn how to properly size your solar inverter with our complete guide. Discover the optimal DC-to-AC ratio and avoid costly ...



[How To Size A Solar Inverter in 3 Easy Steps](#)

What size solar inverter should you use for your system? In this guide we share how to correctly size a solar inverter in 3 steps.



[How to Choose the Right Size Solar Inverter: Step ...](#)

Wondering what size solar inverter do I need for your solar system? This guide walks you through calculating inverter size based on ...



[Solar Inverter Sizing Guide for Maximum Efficiency ...](#)

In most cases, the inverter size should be close to the size of your solar panel system, within a 33% ratio. For example, a 6.6kW solar ...



[How To Size A Solar Inverter in 3 Easy Steps](#)

What Size Solar Inverter Do I Need? A solar inverter should closely match your solar system's output in kW--typically within 80% to ...



[Everything You Need to Know About Inverter Sizing](#)

It is best when the total capacity of your solar panels (DC size) is slightly bigger than the peak capacity of your inverters (AC size). To set up an efficient solar system, we ...



How to Determine the Right Solar Inverter Size for Your System

Learn how to choose the right solar inverter size for maximum efficiency, energy savings, and system performance. Avoid common pitfalls and boost ROI.

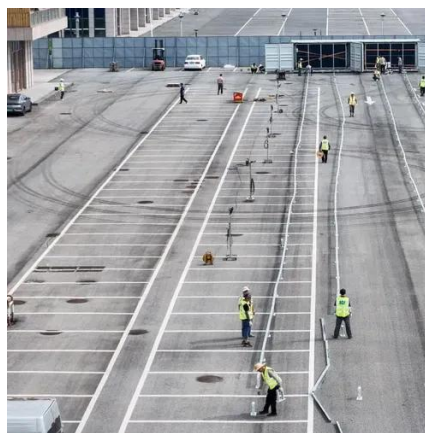


[How big an inverter should a photovoltaic power station use](#)

To calculate the ideal inverter size for your solar PV system, you should consider the total wattage of your solar panels and the specific conditions of your installation site.

[Solar Inverter Sizing Guide: How to Size Your Inverter](#)

Learn how to properly size your solar inverter with our complete guide. Discover the optimal DC-to-AC ratio and avoid costly sizing mistakes.



[Solar Inverter Sizing Guide for Maximum Efficiency , Mingch](#)

In most cases, the inverter size should be close to the size of your solar panel system, within a 33% ratio. For example, a 6.6kW solar array often pairs with a 5kW inverter to ...



Contact Us

For inquiries, pricing, or partnerships:

<https://www.sccd-sk.eu>

Phone: +32 2 808 71 94

Email: info@sccd-sk.eu

Scan QR code for WhatsApp.

