



# How big does a home inverter need to be





## Overview

---

You know you need a power inverter, but the big question is: How big of a power inverter do I need?

In general, a 3000W to 5000W inverter works well for most homes, but the exact size depends on factors like household appliances, total power consumption, and battery setup.

You know you need a power inverter, but the big question is: How big of a power inverter do I need?

In general, a 3000W to 5000W inverter works well for most homes, but the exact size depends on factors like household appliances, total power consumption, and battery setup.

How to determine what size inverter I need?

Before we go any further, we highly recommend that you choose a pure sine wave inverter. This type of inverter delivers high-quality electricity, similar to your utility company. This way, none of your appliances run the risk of being damaged. Now, when.

You know you need a power inverter, but the big question is: How big of a power inverter do I need?

In general, a 3000W to 5000W inverter works well for most homes, but the exact size depends on factors like household appliances, total power consumption, and battery setup. In this guide, we'll.

Understanding your power needs is crucial for selecting the right inverter size. Calculate continuous and surge power requirements for efficient power delivery. Utilize inverter sizing calculators to simplify your selection process. Ensure proper compatibility between your inverter and battery.

Your inverter size should match your solar array's capacity, not your electricity bill. This means your inverter doesn't need to power your entire home—it just converts whatever your panels generate. Let's say you have a 6kW solar array (twenty



300-watt panels). Your inverter needs to handle that.

Sizing your inverter depends on your load profile, environmental factors, and inverter specs. The solar inverter serves as the heart of any photovoltaic (PV) power system, performing the critical function of converting the direct current (DC) electricity generated by solar panels or stored in.

The inverter size depends on the number of appliances or gadgets you want to run with it during outages or outdoor activities. If you want to power up more appliances, you will need a bigger inverter. To calculate or determine what size inverter can meet your energy requirements, you need to. How do I choose the right inverter size?

Here is our last bit of advice on how to select the correct inverter size: Check our inverter size chart. List all your appliances in the function of their power output. Apply our inverter size formula. Do not exceed 85% of your inverter's maximum power continuously. Oversize your inverter for extra appliances in the future.

What size solar inverter do I Need?

Your inverter size should match your solar array's capacity, not your electricity bill. This means your inverter doesn't need to power your entire home—it just converts whatever your panels generate. Let's say you have a 6kW solar array (twenty 300-watt panels).

What is inverter size?

Inverter size is measured in watts (W) and depends on two key specs: \* Important: Your inverter must cover both the total running watts of all devices plus the highest surge wattage of any single appliance. 3. Step-by-Step: How to Calculate Your Inverter Size Include: Home: Fridge, lights, TV, microwave, AC.

How much power does an inverter need?

Therefore, the inverter must have a continuous power rating of at least 650W. Operating an inverter at a load exceeding its continuous rating will trigger its overload protection, causing it to automatically cut power to prevent thermal damage to its internal components.



## How big does a home inverter need to be



### [What Size Inverter Do I Need? A Complete Guide for DIY ...](#)

Correct inverter sizing determines how much power from your solar panels or battery bank can be safely delivered to your home's alternating current (AC) appliances. If your ...

### How to Choose the Right Size Solar Inverter: Step-by-Step with ...

Choosing the right solar inverter size is critical--and one of the most common questions: what solar inverter size do I need? Whether you are installing a rooftop system in ...



### [What Size Power Inverter Is Needed for a House \[Full Guide\]](#)

In general, a 3000W to 5000W inverter works well for most homes, but the exact size depends on factors like household appliances, total power consumption, and battery ...

### [The Only Inverter Size Chart You'll Ever Need](#)

We have created a comprehensive inverter size chart to help you select the correct inverter to power your appliances.



### [How to Choose the Right Inverter Size for Your Home: A ...](#)

To pick the right inverter, you first need to know how much power your household uses. Write down all the appliances you want to power. For each item, find the wattage rating ...

### [How to Choose the Right Inverter Size for Your ...](#)

To pick the right inverter, you first need to know how much power your household uses. Write down all the appliances you want to ...



### **What size inverter do I need?**

Sizing your inverter depends on your load profile, environmental factors, and inverter specs.



## [Solar Inverter Sizing Guide: How to Size Your Inverter](#)

Learn how to properly size your solar inverter with our complete guide. Discover the optimal DC-to-AC ratio and avoid costly ...

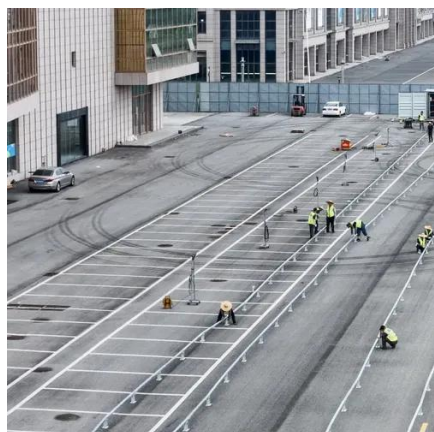


## **What Size Inverter Do You Need for Your Home? - PowerGen USA**

Choosing the right inverter size is essential to ensure system efficiency, device compatibility, and uninterrupted power delivery. An undersized inverter can lead to system ...

## [Solar Inverter Sizing Guide: How to Size Your Inverter](#)

Learn how to properly size your solar inverter with our complete guide. Discover the optimal DC-to-AC ratio and avoid costly sizing mistakes.



## [What Size Inverter Do You Need for Your Home?](#)

The size or capacity of a power inverter for home depends on factors like total power consumption of the load and an additional buffer (10-25%) - it ...



## [How to Choose the Right Size Solar Inverter: Step ...](#)

Choosing the right solar inverter size is critical--and one of the most common questions: what solar inverter size do I need? Whether you ...



## [What Size Inverter Do You Need? A Complete ...](#)

Choosing the right inverter size is crucial--too small, and your appliances won't work; too large, and you'll waste money. This guide will ...



## [What Size Inverter Do You Need for Your Home? - ...](#)

Choosing the right inverter size is essential to ensure system efficiency, device compatibility, and uninterrupted power delivery. An ...



## **What Size Inverter Do You Need? A Complete Guide for Home, ...**

Choosing the right inverter size is crucial--too small, and your appliances won't work; too large, and you'll waste money. This guide will help you determine the ideal inverter ...



## [What Size Inverter Do You Need for Your Home? , Renogy US](#)

The size or capacity of a power inverter for home depends on factors like total power consumption of the load and an additional buffer (10-25%) - it handles potential future expansion, peak ...





## Contact Us

---

For inquiries, pricing, or partnerships:

<https://www.sccd-sk.eu>

Phone: +32 2 808 71 94

Email: [info@sccd-sk.eu](mailto:info@sccd-sk.eu)

Scan QR code for WhatsApp.

