



# How big is a 500W monocrystalline silicon solar panel

 **TAX FREE**    

**Product Model**  
HJ-ESS-215A(100KW/215KWh)  
HJ-ESS-115A(50KW 115KWh)

**Dimensions**  
1600\*1280\*2200mm  
1600\*1200\*2000mm

**Rated Battery Capacity**  
215KWH/115KWH

**Battery Cooling Method**  
Air Cooled/Liquid Cooled

**ENERGY STORAGE SYSTEM**





## Overview

---

A 500 watt solar panel typically has a footprint of 27.5 square feet. This means that it is about 7.40 feet wide and 3.72 feet tall. The panel is made up of 144 half-cut monocrystalline cells, which are the solar cells that convert sunlight into electrical energy.

A 500 watt solar panel typically has a footprint of 27.5 square feet. This means that it is about 7.40 feet wide and 3.72 feet tall. The panel is made up of 144 half-cut monocrystalline cells, which are the solar cells that convert sunlight into electrical energy.

When evaluating solar panel wattage, several key factors impact the efficiency and effectiveness of the solar energy system. Firstly, the material composition of the solar cells significantly influences their power output. Monocrystalline panels, known for their high efficiency, tend to produce.

A 500 watt solar panel typically measures about 65 to 68 inches in length and 39 to 42 inches in width, depending on the manufacturer. 1. An average size for such panels is around 66 inches by 40 inches, making them suitable for various installations. 2. The dimensions are crucial for determining.

The goal here is to get to the average solar panel size by wattage. You can find typical dimensions of 100W, 150W, 170W, 200W, 200W, 220W, 300W, 350W, 400W, and 500W solar panels summarized in the chart below. But, just to emphasize the problem, let's have a look at how the standard solar panel.

When considering solar panels, size is a critical factor. A typical 500W solar panel usually measures around 1.6 meters by 1 meter (approximately 65 inches by 39 inches). However, dimensions can vary slightly based on the manufacturer and the technology used. Here's a quick overview of the common.

500-watt solar panels are bigger than your average solar panel. Typically made up of 144 half-cut monocrystalline cells, their large size makes 500-watt solar panels more commonly seen in commercial, ground-mounted, and utility solar projects. For residential solar projects, is bigger always.

Anodized aluminum frame withstand corrosion and damage, Special osculum can



reduce destruction by water freeze. IP68 junction box long-term weather endurance. High efficiency solar cell to keep the modules efficiency reach to 21.05%. Positive tolerance to ensure higher output. Excellent performance. How much does a 500 W solar panel weigh?

In terms of weight, 500 W panels weigh about 71.2 lbs (32.3 kg) each. That's a lot heavier than the average weight of solar panels of between 40 and 50 pounds. This heaviness means 500 W panels are better suited for commercial uses.

How big is a monocrystalline solar panel?

Monocrystalline Solar Panels have typical heights of 64", 76.5" (163, 194 cm), widths of 39", 51.5" (99, 131 cm), and depths between 1.2"-2" (3-5 cm). Solar cell sizes are 6" x 6" (15 x 15 cm). Outdoor fixtures are the different appliances and equipment that serve users in an outdoor setting.

What is a 500 watt solar panel?

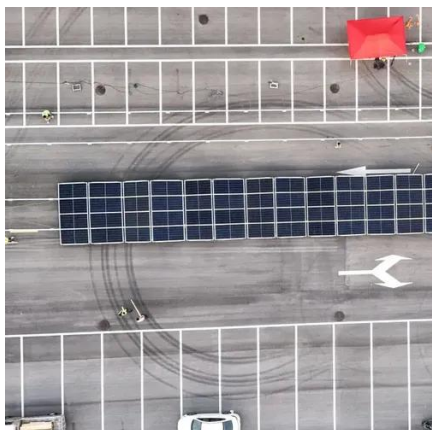
500-watt solar panels are designed for larger solar installations. Half-cut cell technology is used in 500-watt panels. These modules have an efficiency rating of around 21%. Most 500-watt panels are no more efficient than leading residential panels; they're just larger. Oliver is very passionate about the solar industry.

How many 500 watt solar panels do I Need?

In terms of efficiency, all of the 500 W solar panels we examined have module efficiency ratings of around 21%. You would need twelve 500 W solar panels to build a typical residential system with 6 kilowatts (kW) of solar capacity. For reference, building an equivalent 6 kW system using standard 375 W modules would require 16 panels.



## How big is a 500W monocrystalline silicon solar panel

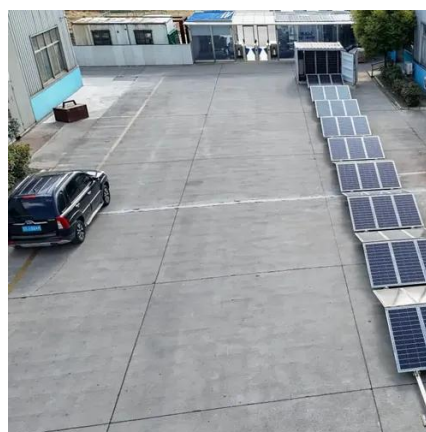


### [Standard Solar Panel Sizes And Wattages \(100W-500W ...](#)

The goal here is to get to the average solar panel size by wattage. You can find typical dimensions of 100W, 150W, 170W, 200W, 200W, 220W, 300W, 350W, 400W, and 500W solar ...

### [How Big is a 500W Solar Panel? Key Insights Revealed](#)

A typical 500W solar panel usually measures around 1.6 meters by 1 meter (approximately 65 inches by 39 inches). However, dimensions can vary slightly based on the ...



### **500w Single-Sided Power Generation Monocrystalline Silicon Solar Panel**

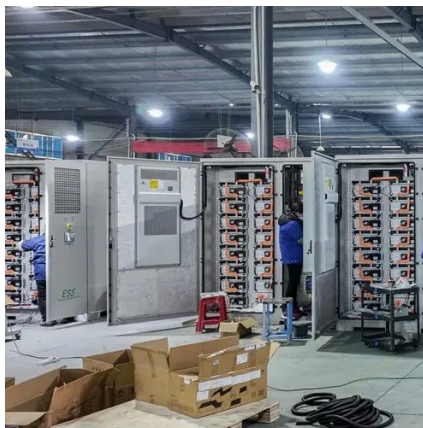
Durable and Reliable: Backed by a 30-year warranty, this panel is built to last, with robust dimensions of 2278x1134x35mm and a weight of 32kg.

### [How Big Is A 500 Watt Solar Panel? \[Updated: December 2025\]](#)

So, how big is a 500 watt solar panel? A 500 watt solar panel typically has a footprint of 27.5 square feet. This means that it is about 7.40 feet wide



and 3.72 feet tall. The ...



### Are 500-Watt Solar Panels The Best Option?

Mono Power:500W  
Dimensions:82.44\*44.65\*1.38inch Characteristics  
High efficiency solar cell to keep the modules efficiency reach to 21.05%. Positive tolerance to ...



### Are 500-Watt Solar Panels The Best Option?

500-watt solar panels are generally made with 144 half-cut monocrystalline cells. The typical footprint of a single 500 W panel is about 27.5 square feet (7.40 feet x 3.72 feet). In terms of ...



### How many inches is a 500 watt solar panel , NenPower

The most common dimensions for a 500 watt panel include a length of approximately 65 to 68 inches and a width of around 39 to 42 inches. This specific size allows ...





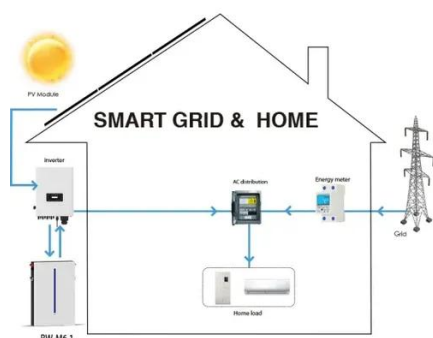
## Monocrystalline solar panels: the expert guide [2025]

The best monocrystalline solar panels have power ratings upwards of 500W, with some exceeding 600W and even 700W. In contrast, you'll struggle to find a polycrystalline ...



## Standard Solar Panel Sizes And Wattages (100W ...)

The goal here is to get to the average solar panel size by wattage. You can find typical dimensions of 100W, 150W, 170W, 200W, 200W, 220W, ...



## **MONOCRYSTALLINE SOLAR MODULES**

Mono Power:500W

Dimensions:82.44\*44.65\*1.38inch Characteristics

High efficiency solar cell to keep the modules efficiency reach to 21.05%. Positive tolerance to ...



## **Solar Panel**

Monocrystalline Solar Panels are manufactured in 60, 72, and 96 cell configurations with a solar efficiency between 15-25%. Monocrystalline Solar Panels have ...



## How Big is a 500-Watt Solar Panel?

Find out how big is a 500 watt solar panel. Learn about its dimensions and space requirements for installations.



### 500w Single-Sided Power Generation Monocrystalline Silicon ...

Durable and Reliable: Backed by a 30-year warranty, this panel is built to last, with robust dimensions of 2278x1134x35mm and a weight of 32kg.



## Contact Us

---

For inquiries, pricing, or partnerships:

<https://www.sccd-sk.eu>

Phone: +32 2 808 71 94

Email: [info@sccd-sk.eu](mailto:info@sccd-sk.eu)

Scan QR code for WhatsApp.

