



How big should I choose for a sine wave inverter





How big should I choose for a sine wave inverter



[What Size Power Inverter Is Needed for a House \[Full Guide\]](#)

In general, a 3000W to 5000W inverter works well for most homes, but the exact size depends on factors like household appliances, total power consumption, and battery ...

What Size Inverter Do You Need? A Complete Guide for Home, ...

Choosing the right inverter size is crucial--too small, and your appliances won't work; too large, and you'll waste money. This guide will help you determine the ideal inverter ...



[How to Size a Home Power Inverter for Your ...](#)

Selecting the right type of inverter is crucial for your system's performance. You'll need to decide between a inverter pure sine wave ...

[What Size Power Inverter Is Needed for a House ...](#)

In general, a 3000W to 5000W inverter works well for most homes, but the exact size depends on factors like household appliances, ...



Commercial and Industrial ESS

Air Cooling / Liquid Cooling

- Budget Friendly Solution
- Renewable Energy Integration
- Modular Design for Flexible Expansion



[How to Size a Pure Sine Wave Inverter? Dimensions & Wattage](#)

Learn how to size a pure sine wave inverter correctly. From calculating continuous wattage to understanding surge loads and inverter dimensions, get the complete guide.

[What Size Solar Inverter Do I Need? A Quick Sizing Guide](#)

This guide will walk you through an easy, step-by-step process to accurately size your inverter, avoid common pitfalls, and highlight how our Lefor Solar Inverter Series can fit your specific ...



[How Do You Size a Pure Sine Wave Inverter?](#)

An appropriately sized inverter not only ensures reliable power delivery but also protects sensitive electronics from voltage spikes and distortion. This guide will walk you through each step of ...



[What Size Solar Inverter Do I Need? A Quick ...](#)

This guide will walk you through an easy, step-by-step process to accurately size your inverter, avoid common pitfalls, and highlight how our Lefor ...

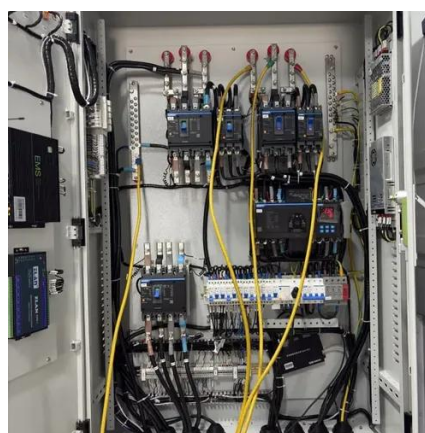


[How Big of a Pure Sine Wave Inverter Do I Need?](#)

This article serves as a comprehensive guide to help you understand how to choose the appropriate size for a pure sine wave ...

[What Size Inverter Do I Need? A Complete Guide for DIY ...](#)

Choosing the right inverter size is key to getting efficient power delivery without problems like tripping, clipping, or wasted energy. Correct inverter sizing determines how ...



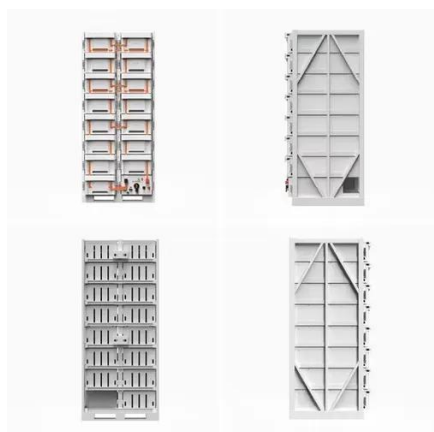
[The Only Inverter Size Chart You'll Ever Need](#)

Choosing the right inverter size is crucial--too small, and your appliances won't work; too large, and you'll waste money. This guide will help you determine the ideal inverter ...



[How Big of a Pure Sine Wave Inverter Do I Need?](#)

This article serves as a comprehensive guide to help you understand how to choose the appropriate size for a pure sine wave inverter. Read on to optimize your power ...



[The Only Inverter Size Chart You'll Ever Need](#)

We have created a comprehensive inverter size chart to help you select the correct inverter to power your appliances.

How to Size a Home Power Inverter for Your Needs: A Step-by ...

Selecting the right type of inverter is crucial for your system's performance. You'll need to decide between a inverter pure sine wave and a modified sine wave inverter.



What size inverter do I need?

To properly size the inverter, the user must identify the single appliance with the highest startup surge and ensure the inverter's peak power rating exceeds this value.



Contact Us

For inquiries, pricing, or partnerships:

<https://www.sccd-sk.eu>

Phone: +32 2 808 71 94

Email: info@sccd-sk.eu

Scan QR code for WhatsApp.

