



How does the base station achieve communication





How does the base station achieve communication



What Is the Role of a Base Station in Wireless Communication?

Base stations are critical components in wireless communication networks, serving as the intermediary between mobile devices and the core network. They play a vital role in ...

What is a Base Station? -- From Communication ...

Simply put, a base station (BS) is a wireless transceiver device in a mobile communication network that provides wireless ...



Base Stations

Base stations form a key part of modern wireless communication networks because they offer some crucial advantages, such as wide coverage, continuous communications and ...

Base Station's Role in Wireless Communication Networks

The base station transmits and receives signals, ensuring seamless communication over radio frequencies. In essence, it acts as the



intermediary between the ...



What Is a Telecom Base Station and How Does It Work?

In simple terms, the base station uses radio signals to cover a certain geographic area, allowing mobile devices within this area to connect to the communication network and the internet ...

Base station subsystem

The base station subsystem (BSS) is the section of a traditional cellular telephone network which is responsible for handling traffic and signaling between a mobile phone and the network ...



Base Station's Role in Wireless Communication Networks

The base station transmits and receives signals, ensuring seamless communication over radio frequencies. In essence, it acts as the intermediary between the user and the network, ...



What Is a Base Station? Definition and How It Works

Its function is to transmit and receive radio signals to and from wireless client devices. The base station acts as a converter, taking radio waves from a mobile phone and ...



Base Stations and Cell Towers: The Pillars of Mobile Connectivity

Base stations and cell towers are critical components of cellular communication systems, serving as the infrastructure that supports seamless mobile connectivity. These ...

Understanding Base Stations: The Backbone of Wireless ...

A base station is a fixed communication infrastructure that connects mobile devices (such as smartphones, tablets, or IoT devices) to a network, enabling wireless communication.



Base Stations

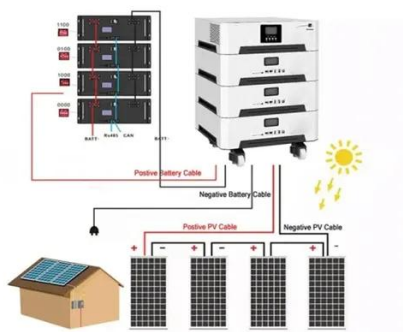
Base stations form a key part of modern wireless communication networks because they offer some crucial advantages, ...





What Is A Base Station?

Base stations play a central role in two-way radio systems, such as citizens band (CB) radio and ham radio. In these setups, the base station serves as a fixed point of ...



What is a Base Station? -- From Communication Core to ...

Simply put, a base station (BS) is a wireless transceiver device in a mobile communication network that provides wireless coverage and communicates with mobile ...

Understanding Base Stations: The Backbone of Wireless Communication

A base station is a fixed communication infrastructure that connects mobile devices (such as smartphones, tablets, or IoT devices) to a network, enabling wireless communication.





Contact Us

For inquiries, pricing, or partnerships:

<https://www.sccd-sk.eu>

Phone: +32 2 808 71 94

Email: info@sccd-sk.eu

Scan QR code for WhatsApp.

