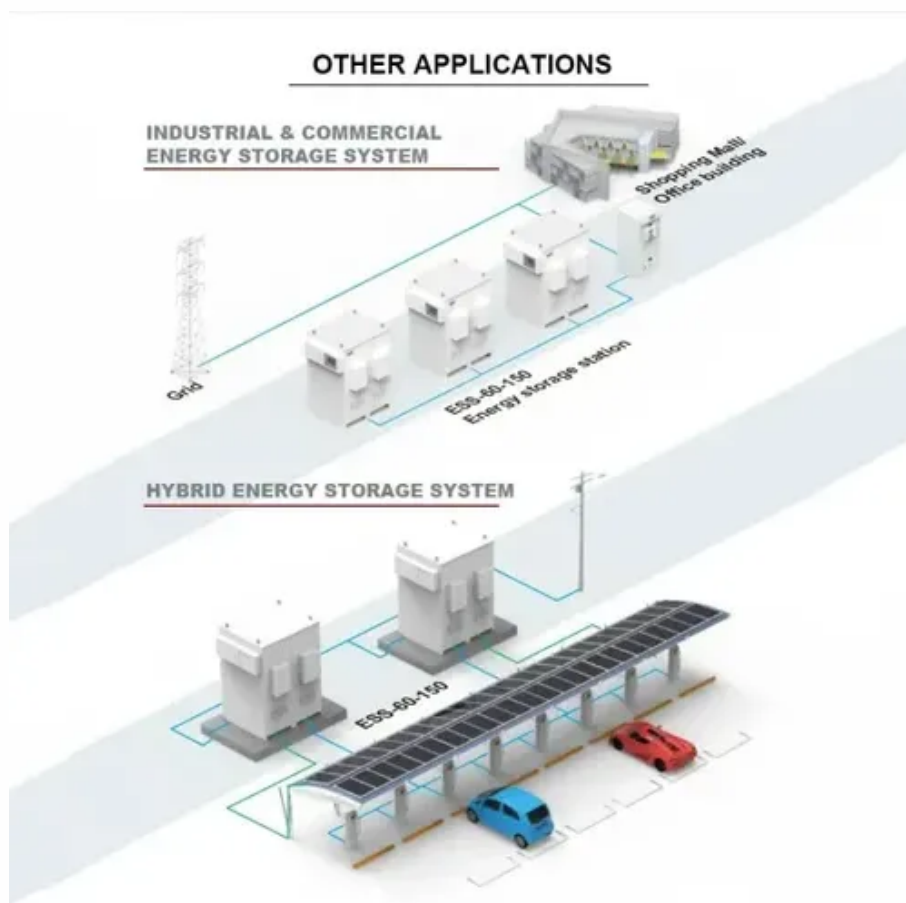




How fast is solar power discharge

How many watts





Overview

If you discharge it by 50%, that's 600Wh to replace. With a 200W solar panel at 85% efficiency, the panel delivers 170W. Divide 600Wh by 170W and you'll get about 3.5 hours of full sunlight. Enter your battery capacity. You can use Ah or Wh. If you use Ah, also enter the.

If you discharge it by 50%, that's 600Wh to replace. With a 200W solar panel at 85% efficiency, the panel delivers 170W. Divide 600Wh by 170W and you'll get about 3.5 hours of full sunlight. Enter your battery capacity. You can use Ah or Wh. If you use Ah, also enter the.

How many watts is the solar discharge voltage?

1. The discharge voltage from a solar panel varies based on multiple factors, including its design and environmental conditions. Typically, the output voltage ranges between 18 to 22 volts for standard solar panels, depending on the panel type.

Number of solar panels x wattage of individual solar panels = total wattage of solar panels For example, assuming you have 20 units 200w solar panels in your solar system, according to the above formula, you can enter 4000 into the solar panel wattage column of the calculator. 2. Solar battery.

To do this, you enter the various wattages of your solar panel and you can see which one will charge your battery the fastest. Solar Panel Charge Time Calculator: Why Do I Need It?

As we mentioned above, the calculation tells you how long it takes for your battery to charge using power captured by.

How to calculate charging time of battery by solar panel?

Divide the battery's watt-hours by the panel's wattage, then add 20% to account for power loss. Convert battery capacity from Ah to Wh by multiplying with voltage. Factor in 20-30% efficiency loss from heat, wiring, and controllers. Panel.

If you discharge it by 50%, that's 600Wh to replace. With a 200W solar panel at

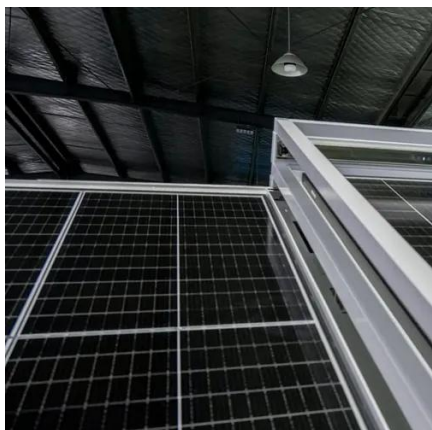


85% efficiency, the panel delivers 170W. Divide 600Wh by 170W and you'll get about 3.5 hours of full sunlight. Enter your battery capacity. You can use Ah or Wh. If you use Ah, also enter the battery voltage. Add your.

Here's a comprehensive table that summarizes the key factors you need to know about solar battery charge time: Measured in Ah (Amp-hours) or Wh (Watt-hours), it represents how much energy the battery can store. Example: 100Ah or 1200Wh. Measured in watts (W), it indicates the amount of power the.



How fast is solar power discharge How many watts

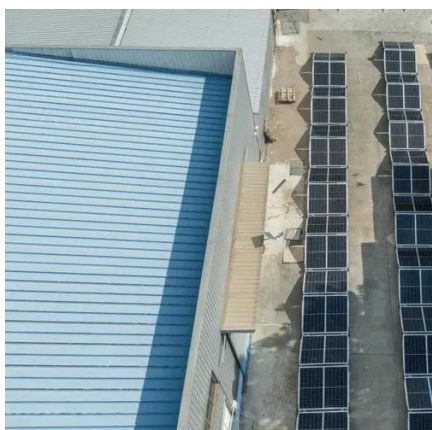


[How to Calculate Charging Time of Battery by Solar Panel](#)

So here's the deal: figuring out how long your solar panel takes to charge a battery isn't rocket science. You just need the panel's wattage, the battery's capacity, and a pinch of ...

Solar Panel Charge Time Calculator

Number of solar panels x wattage of individual solar panels = total wattage of solar panels For example, assuming you have 20 units ...



Solar Panel Charge Time Calculator

The charge time calculation also gives you an indication of how quickly your battery charges based on differently-sized solar panels. To do this, you ...

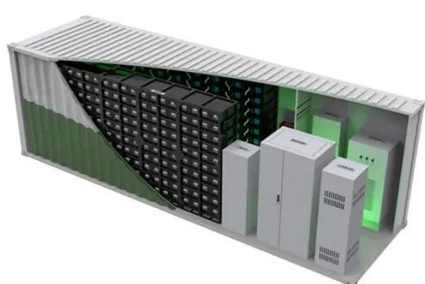
[Solar Battery Charge Time Calculator](#)

Formula: Charge Time (hours) = Battery Capacity (Ah) / (Solar Panel Wattage * Solar Insolation * Panel Efficiency) For example, ...



[Solar Battery Charge Time Calculator \(12v, 24v, ...\)](#)

Use our solar battery charge time calculator to find out how long it will take to recharge your battery using solar panels.



Solar Panel Charge Time Calculator

Number of solar panels x wattage of individual solar panels = total wattage of solar panels For example, assuming you have 20 units 200w solar panels in your solar system, ...



[Solar Panel Charging Time Calculator](#)

Easily find out how long your solar panels take to charge any battery. Use our free solar panel charging time calculator for fast and accurate results.





Solar Panel Charge Time Calculator

The charge time calculation also gives you an indication of how quickly your battery charges based on differently-sized solar panels. To do this, you enter the various wattages of your ...



[How many watts is the solar discharge voltage? , NenPower](#)

Testing solar discharge voltage must also involve assessing solar irradiance, the solar power per unit area received. Typically measured in watts per square meter (W/m^2), this ...

[All You Need to Know about Amps, Watts, and Volts in Solar](#)

To calculate amps or to calculate amps from watts and voltage we use the formula from ohms law given below. $Amps = Watts / Voltage$. Calculated amps for power small equipment the typical ...



[How many watts is the solar discharge voltage?](#)

Testing solar discharge voltage must also involve assessing solar irradiance, the solar power per unit area received. Typically ...



[Solar Battery Charge Time Calculator](#)

Here's a comprehensive table that summarizes the key factors you need to know about solar battery charge time:



[Solar Battery Charge Time Calculator \(12v, 24v, 48v\)](#)

Use our solar battery charge time calculator to find out how long it will take to recharge your battery using solar panels.



[All You Need to Know about Amps, Watts, and ...](#)

To calculate amps or to calculate amps from watts and voltage we use the formula from ohms law given below. $Amps = Watts / Voltage$. Calculated

...



[How to Calculate Charging Time of Battery by ...](#)

So here's the deal: figuring out how long your solar panel takes to charge a battery isn't rocket science. You just need the panel's ...





How Fast Do Solar Panels Charge Batteries: Factors Influencing ...

Charging Speed Depends on Multiple Factors: The speed at which solar panels charge batteries is influenced by solar panel efficiency, battery capacity, sunlight intensity, and ...



[Solar Battery Charge Time Calculator](#)

Formula: Charge Time (hours) = Battery Capacity (Ah) / (Solar Panel Wattage * Solar Insolation * Panel Efficiency) For example, consider a battery of 100Ah capacity, a solar ...



Contact Us

For inquiries, pricing, or partnerships:

<https://www.sccd-sk.eu>

Phone: +32 2 808 71 94

Email: info@sccd-sk.eu

Scan QR code for WhatsApp.

