



# How long can the base station backup power supply be used





## How long can the base station backup power supply be used



### Cell Tower Backup Power for Reliable Uptime

The FCC mandates that cell sites must have eight hours of backup power, with some areas requiring 24 to 72 hours due to extended outage risks. A reliable phone network is ...

### Can Battery Backup Stay On? How Long Will It Power Your ...

Typically, a battery backup can last anywhere from a few minutes to several hours. For example, a system with a capacity of 1000 watts can power a 200-watt device for ...



**Low Voltage  
Lithium Battery**  
6000+ Cycle Life



### Calculate Backup Duration , Base Power

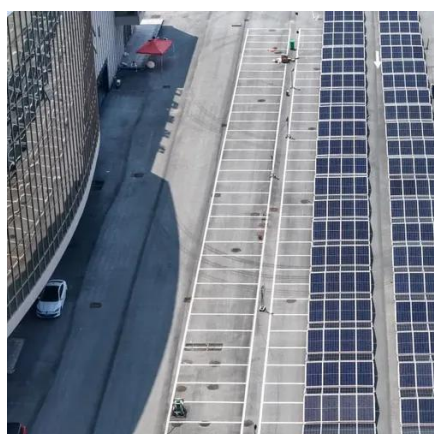
They can run indefinitely as long as fuel is available, but come with high installation costs (\$12,000-\$20,000) and ongoing maintenance. They're best for homes that lose power ...

## What Are the Critical Aspects of Telecom Base Station Backup ...

Q2: How long can telecom backup batteries typically provide power? A2: Backup duration depends on capacity and load but typically ranges



from several hours to over a day during ...



### Understanding Backup Battery Requirements for ...

Telecom base stations require reliable backup power to ensure uninterrupted communication services. Selecting the right backup battery ...

## **Understanding Backup Battery Requirements for Telecom Base Stations**

Telecom base stations require reliable backup power to ensure uninterrupted communication services. Selecting the right backup battery is crucial for network stability and ...



### Telecom Battery Backup Systems. Backup Power ...

In the 4G era, the maximum power consumption of a single base station can reach 1300W. Since 5G uses a larger array antenna and higher ...





## [How Long Does a Home Backup Battery Last?](#)

How long a home backup battery can operate without recharging depends on several key factors: the battery's storage capacity ...



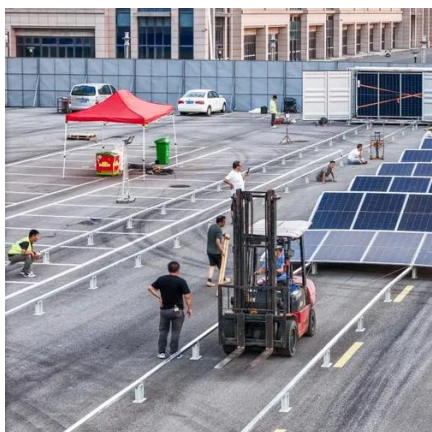
## [Telecom Base Station Backup Power Solution: ...](#)

Discover the 48V 100Ah LiFePO4 battery pack for telecom base stations: safe, long-lasting, and eco-friendly. Optimize reliability with ...



## [Communication Base Station Backup Power Selection Guide](#)

Choosing the appropriate standby power supply is very important for the stable operation of the communication base station. This article will introduce how to select an ...



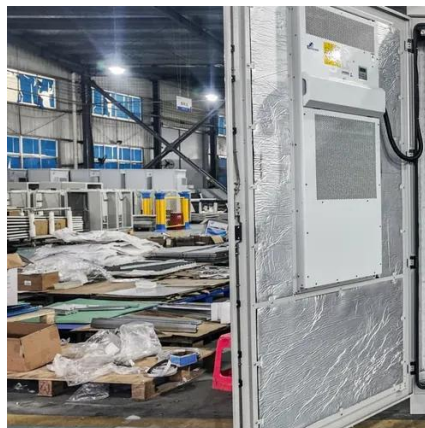
## [Telecom Base Station Backup Power Solution: Design Guide for ...](#)

Discover the 48V 100Ah LiFePO4 battery pack for telecom base stations: safe, long-lasting, and eco-friendly. Optimize reliability with our design guide.



## [Securing Backup Power for Telecom Base Stations - leagend](#)

This article will explore in detail how to secure backup power for telecom base stations, discussing the components involved, advanced technologies, best practices, and ...



## [Securing Backup Power for Telecom Base Stations ...](#)

This article will explore in detail how to secure backup power for telecom base stations, discussing the components involved, advanced ...



## **Telecom Battery Backup Systems, Backup Power For Telecom ...**

In the 4G era, the maximum power consumption of a single base station can reach 1300W. Since 5G uses a larger array antenna and higher bandwidth, the base station will process massive ...



## [How Long Does a Home Backup Battery Last? , EcoFlow JP](#)

How long a home backup battery can operate without recharging depends on several key factors: the battery's storage capacity when fully charged, your household's ...





## Contact Us

---

For inquiries, pricing, or partnerships:

<https://www.sccd-sk.eu>

Phone: +32 2 808 71 94

Email: [info@sccd-sk.eu](mailto:info@sccd-sk.eu)

Scan QR code for WhatsApp.

