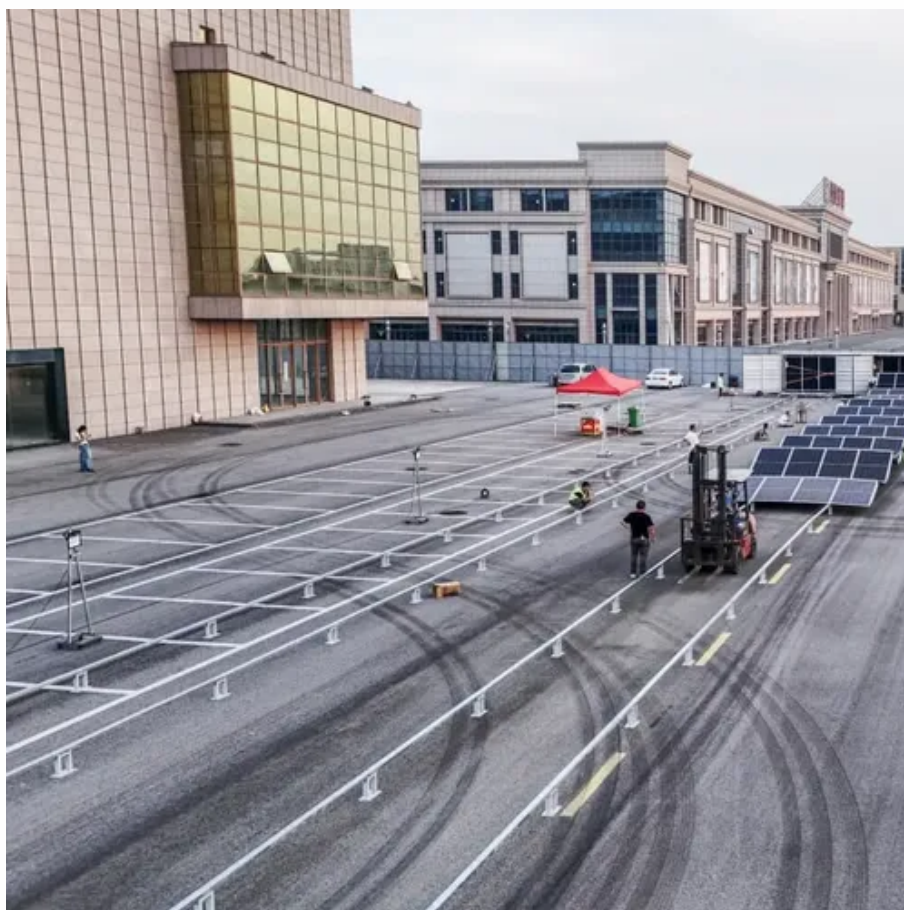




How long does it take for a 12v 100A inverter to discharge





Overview

A 100Ah battery can technically run a 2000W inverter but only for 36–50 minutes at full load, assuming a 12V system and 85% inverter efficiency. Real-world runtime depends on battery type (lead-acid vs lithium), depth of discharge limits, and actual power draw.

A 100Ah battery can technically run a 2000W inverter but only for 36–50 minutes at full load, assuming a 12V system and 85% inverter efficiency. Real-world runtime depends on battery type (lead-acid vs lithium), depth of discharge limits, and actual power draw.

As a simple rule, to calculate how long a 12v deep-cycle battery will last with an inverter multiply battery amp-hours (Ah) by 12 to find watt-hours, and divide by the load watts to find run time hours. Finally, multiply run time hours by 95% to account for inverter losses. Introduction to Solar.

A 12-volt, 100Ah battery can run a 1000-watt load for about 1 hour and 6 minutes. A 200Ah battery can power the same load for roughly 2 hours and 12 minutes. Remember, battery health affects these times, and aging batteries may hold less capacity, reducing overall run time. Third, the efficiency of.

A 12V battery's runtime with an inverter depends on the battery capacity (Ah), the inverter's efficiency, and the power load. On average, a 100Ah deep-cycle battery running a 300W load can last about 3 to 4 hours before reaching a 50% depth of discharge (DOD). However, actual performance varies.

The table below provides a simplified runtime estimate for a 12V battery under two scenarios: when the inverter is running at full rated load and when it's operating with no load (assuming 5% self-consumption). Note: Most inverters use less than 5% of their rated power when idle. For example, the.

With a 1000 watt inverter you can run a lot of appliances, but how long can a 12V battery last on it?

The answer depends on several factors. A 12V 100ah battery with a 50% depth discharge will last 30 minutes on a fully loaded 1000 watt inverter. The same battery with a 300 watt load will run for.



How long does it take to completely discharge the battery?

Let's begin by calculating the total energy capacity of the battery which is simply $12 \times 100 = 1200$ Wh. The load is 300W. Because of the inverter's inefficiency and to deal with the initial load current, a good rule of thumb is to add 20%.



How long does it take for a 12v 100A inverter to discharge



How Fast Will a Power Inverter Drain Your Battery?

Calculate the expected running time = $10 \times (100 \div 211) \div 2 = 2.36$ hours. So, using your 100 AH battery will give you almost 2 hours and 22 minutes of usage time. The estimated ...

How long will a 12v battery last with inverter

To calculate how long a 12V battery will last with an inverter, you need to determine the total power consumption of the inverter and the loads connected to the inverter ...



Can a 100Ah Battery Power a 2000W Inverter? Key Insights

Lead-acid batteries require 50% depth of discharge (DoD), reducing runtime to 15 minutes. Lithium (LiFePO4) with 80% DoD extends this to 25 minutes. When calculating runtime, ...

Inverter Runtime: How Long Will It Run Off A Battery? Factors To

Understanding these factors helps users estimate how long their inverter will run off battery power. By considering capacity, consumption, efficiency,



and load, users can make ...

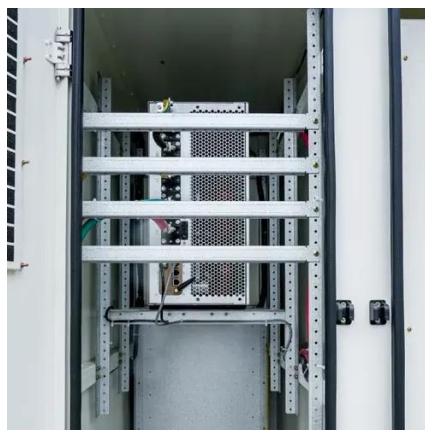


Inverter Usage Time Calculator

Understanding how long your inverter will last is essential for efficient energy management and backup power planning. This guide explores the science behind inverter ...

How Long Will A 12v Battery Last With An Inverter? Calculator

As a simple rule, to calculate how long a 12v deep-cycle battery will last with an inverter multiply battery amp-hours (Ah) by 12 to find watt-hours, and divide by the load watts ...



[How Long Will a 12V Battery Last with an Inverter?](#)

On average, a 100Ah deep-cycle battery running a 300W load can last about 3 to 4 hours before reaching a 50% depth of discharge (DOD). However, actual performance varies ...





How Fast will a Power Inverter Drain a Battery?

This then raises the question, how long does it take for a battery to completely discharge and drain fully while connected to an inverter. As we will see, this depends on a number of factors ...



How long will a 12v battery last with inverter

Factor 1 - How Many Watts Are in A 12Volt Battery
Factor 2 - What Is The Depth of Discharge of The Battery
Factor 4 - What Is The Inverter Efficiency?
Inverter efficiency is a critical factor that directly impacts the overall energy consumption and battery duration in a system. Efficiency refers to how effectively the inverter can convert the DC power from the battery into AC power for your devices. It is usually expressed as a percentage. Efficiency is an important consideration because not all o See more on [powmr portablesolarexpert](#)

How Long Will a 12V Battery Last with a 1000 Watt Inverter?

A 12V 100ah battery with a 50% depth discharge will last 30 minutes on a fully loaded 1000 watt inverter. The same battery with a 300 watt load will run for about 3 hours on a 1000 watt inverter.

How Long Will a 12V 100Ah Lithium Battery Last?

Amp-hours are a key measure of how long your battery can consistently power a device before the next charge. Accurately predicting the runtime of a 100Ah lithium battery ...





How Long Will A 12v Battery Last With An ...

As a simple rule, to calculate how long a 12v deep-cycle battery will last with an inverter multiply battery amp-hours (Ah) by 12 to ...

How Long Will a 12V Battery Last with a 1000 Watt Inverter?

A 12V 100ah battery with a 50% depth discharge will last 30 minutes on a fully loaded 1000 watt inverter. The same battery with a 300 watt load will run for about 3 hours on a 1000 watt inverter.



How Long Will a 12V 100Ah Lithium Battery Last?

Amp-hours are a key measure of how long your battery can consistently power a device before the next charge. Accurately predicting ...

How Fast Will a Power Inverter Drain Your ...

Calculate the expected running time = $10 \times (100 \div 211) \div 2 = 2.36$ hours. So, using your 100 AH battery will give you almost 2 hours ...





Contact Us

For inquiries, pricing, or partnerships:

<https://www.sccd-sk.eu>

Phone: +32 2 808 71 94

Email: info@sccd-sk.eu

Scan QR code for WhatsApp.

