



# How long does it take for the battery cabinet to be fully charged before it can be used





## Overview

---

Once the charger indicates a full charge, it's ready to use. This process typically takes 1 to 3 hours, depending on the battery size and charge rate.

Once the charger indicates a full charge, it's ready to use. This process typically takes 1 to 3 hours, depending on the battery size and charge rate.

Once the charger indicates a full charge, it's ready to use. This process typically takes 1 to 3 hours, depending on the battery size and charge rate. If you're looking for reliable, high-quality custom lithium battery solutions, Ufine Battery is a trusted Chinese manufacturer with years of.

A battery charging cabinet provides a safe and efficient solution for managing these risks by offering controlled environments for both charging and storage. A lithium battery cabinet is designed to protect batteries from overheating, prevent thermal runaway, and contain any potential fires. These.

Before charging your new lithium battery for the first time, there are a few key steps to take: Carefully remove the battery from its packaging. Inspect it for any damage or issues. Make sure there are no dents, cracks, or other defects. Contact the manufacturer right away if you find a problem.

You should wait some time after using a battery before charging it again. How long should you wait after usage before charging?

For example, if I use a battery powered string-trimmer or lawn-mower and the battery has gone empty (and probably quite warm,) how long should I wait before connecting it.

Most lithium-ion batteries reach a full charge within 2-4 hours, depending on capacity (mAh), charger speed, age, and battery health. Unlike older nickel batteries, lithium batteries do NOT require long "activation charges" such as 8-12 hours. Most modern lithium batteries include: This ensures.

Keep in mind that the battery will self discharge, I think it's after 30 days (manual excerpt below does not say). I'm not sure, as I have not tried this, but if the battery is on the charger, and the charger is plugged in, then the battery may initiate the



self-discharge. Or may not initiate the. How long should you charge a lithium battery?

Always refer to the manufacturer's guidelines for specific charging instructions and recommendations. Myth: You need to charge the battery for 12 hours on the first charge. Fact: Modern lithium batteries do not require such long initial charging times. Follow the manufacturer's guidance. Myth: You should fully discharge the battery before charging.

How long does it take to charge a battery?

The time it takes to charge a battery depends on the charger's output and the battery's capacity. A small 20Ah battery would take about 2 hours to fully charge with a 10 amp charger, while a medium-sized 50Ah battery would need close to 5 hours.

What is a battery charging cabinet?

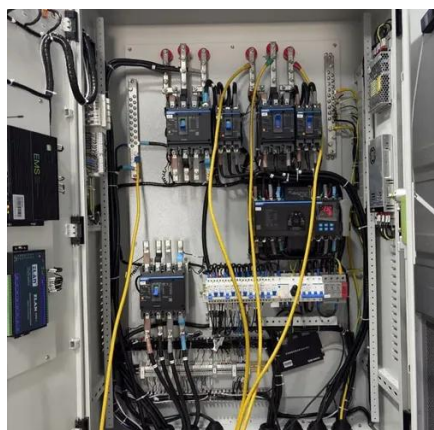
A battery charging cabinet provides a safe and efficient solution for managing these risks by offering controlled environments for both charging and storage. A lithium battery cabinet is designed to protect batteries from overheating, prevent thermal runaway, and contain any potential fires.

How long does it take to charge a 12 volt battery?

This is assuming that you are using a standard charger and that the battery is not completely dead. If the battery is completely dead, it will take longer to charge. There are faster chargers on the market that can charge a 12-volt lithium battery in about an hour, but they are more expensive.



## How long does it take for the battery cabinet to be fully charged before



### How should I store the battery when not in use? On or off the ...

When the battery pack is fully charged, the green LED will stop flashing and will shine green continuously. The power indicator on the battery pack will go out. Wait until the cooling fan ...

### The Ultimate Guide to Battery Charging Cabinets: Safe Storage ...

Monitor battery charging times and store batteries in a cool, dry environment to reduce the risk of thermal runaway. A battery charging cabinet is a crucial investment for ...



### [Master First-Time Lithium Battery Charging: Tips](#)

Charging a new lithium battery for the first time can be confusing. You may ask questions like how long do I charge it for? Will it ...

### [Master First-Time Lithium Battery Charging: Tips & Tricks](#)

Charging a new lithium battery for the first time can be confusing. You may ask questions like how long do I charge it for? Will it overcharge? Should I



charge it fully or not? In ...



### How Long to Charge a Lithium Battery for the First Time: Expert ...

How Long Should You Charge a Lithium Battery for the First Time? Most lithium-ion batteries reach a full charge within 2-4 hours, depending on capacity (mAh), charger speed, ...



### [How Long Should You Charge a Li Battery for the ...](#)

Wondering how long to charge a lithium battery initially? Learn first-time charging tips, myths, and best practices for lithium battery care.



### How Long Does It Take to Fully Charge a New Lead Acid Battery?

Charging a new lead-acid battery typically takes between 8 to 12 hours, depending on its size, the type of charger used, and the battery's current state of charge. This process ...





## Do I Need to Fully Charge a Lithium Ion Battery Before Use? In ...

When you first get a lithium-ion battery, it is important to charge it fully. This will help ensure that the battery performs at its best from the start. However, after the initial charge, you ...



## Usage Guide for EBL Batteries

Rechargeable batteries should be fully charged before initial use or after prolonged storage. Follow the user manual for recommended charging ...

## Best Practices for Charging, Maintaining, and Storing Lithium ...

Once your battery is fully charged, disconnect it from the charger. Leaving devices connected to chargers overnight or for extended periods can lead to overcharging, which may strain the ...



## [The Ultimate Guide to Battery Charging Cabinets: ...](#)

Monitor battery charging times and store batteries in a cool, dry environment to reduce the risk of thermal runaway. A battery charging ...



## Best Practices for Charging, Maintaining, and Storing Lithium Batteries

Once your battery is fully charged, disconnect it from the charger. Leaving devices connected to chargers overnight or for ...

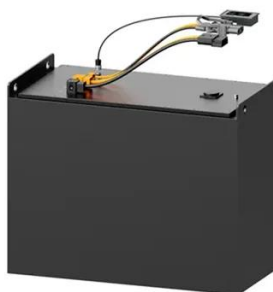


### [Do I Need to Fully Charge a Lithium Ion Battery ...](#)

When you first get a lithium-ion battery, it is important to charge it fully. This will help ensure that the battery performs at its best from the ...

### [How Long Should You Charge a Li Battery for the First Time?](#)

Wondering how long to charge a lithium battery initially? Learn first-time charging tips, myths, and best practices for lithium battery care.



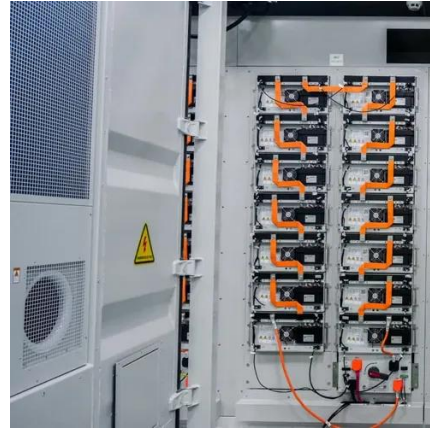
### **Usage Guide for EBL Batteries**

Rechargeable batteries should be fully charged before initial use or after prolonged storage. Follow the user manual for recommended charging methods. Store batteries in a cool, dry ...



## batteries

High or low charges on a stored lithium battery stress it, even with the battery otherwise idle. The best way to store lithium-ion or lipo is at about half charge and close to 0C (32F) without ...





## Contact Us

---

For inquiries, pricing, or partnerships:

<https://www.sccd-sk.eu>

Phone: +32 2 808 71 94

Email: [info@sccd-sk.eu](mailto:info@sccd-sk.eu)

Scan QR code for WhatsApp.

