



How long does it take to charge and discharge the battery cabinet



- ✓ 100KWH/215KWH
- ✓ LIQUID/AIR COOLING
- ✓ IP54/IP55
- ✓ BATTERY 6000 CYCLES





Overview

This calculator enables you to accurately estimate the charging time and duration of battery discharge based on various parameters like battery capacity, current, and efficiency.

This calculator enables you to accurately estimate the charging time and duration of battery discharge based on various parameters like battery capacity, current, and efficiency.

Over time, individual cells may charge and discharge at different rates, leading to an imbalance. The BMS detects these imbalances and redistributes the charge among the cells to ensure that all cells have the same SOC. This helps to extend the overall lifespan of the battery pack. Over - charge.

This calculator enables you to accurately estimate the charging time and duration of battery discharge based on various parameters like battery capacity, current, and efficiency. By providing precise calculations, it assists you in better understanding your battery's performance, thus aiding in.

The battery charge time calculator lets you figure out the time required to fully power your battery. In this Jackery guide, we'll reveal four methods to calculate battery charging time with a few simple formulas. What is Battery Charge Time?

How to Calculate Battery Charging Time?

If you want to.

A lithium-ion battery charging cabinet has become a critical solution for managing safety risks, controlling environmental conditions, and complying with charging and storage standards. This article explores the science of lithium-ion charging, the engineering logic behind battery charging.

It usually takes about 5 to 10 hours to fully charge a Powerwall battery from empty using regular home electricity supply. The exact time can vary based on how much power you're supplying it with. [pdf] How long does a 100 kWh battery storage system take to charge?



The charging time of a 100 kWh.

How long does it take to charge a battery?

For an operator, few things are more frustrating than turning the key of your machine in the middle of a job site and hearing. nothing. A dead battery doesn't just delay you—it stops the entire operation. A common question we hear: "If I run the machine.



How long does it take to charge and discharge the battery cabinet



Battery Charge Time Calculator

Our battery charge time calculator estimates battery charging time using capacity, current, and battery type.

[How to Calculate Battery Charging Time](#)

Easily calculate battery charging time with the simple guide and formula. Learn how voltage, capacity, and charger current affect charge time.



Electric battery

An electric battery is a source of electric power consisting of one or more electrochemical cells with external connections [1] for powering electrical devices. When a battery is supplying ...



[Understanding the Lithium-Ion Battery Charging Cabinet: ...](#)

Unlike lead-acid, lithium-ion does not use float charging or trickle charging. Once the charge voltage threshold is reached and the current drops



to 3-5% of the battery's rated ...



Battery pack calculator : Capacity, C-rating, ampere, charge and

For a given capacity, C-rate is a measure that indicate at what current a battery is charged and discharged to reach its defined capacity.



HOW LONG DOES A BATTERY TAKE TO CHARGE AND DISCHARGE?

You can use the battery charge time calculator to find the time required to fully charge the dead battery. If you use a battery backup for a home or a solar generator for off-grid living, using a ...



Electric battery

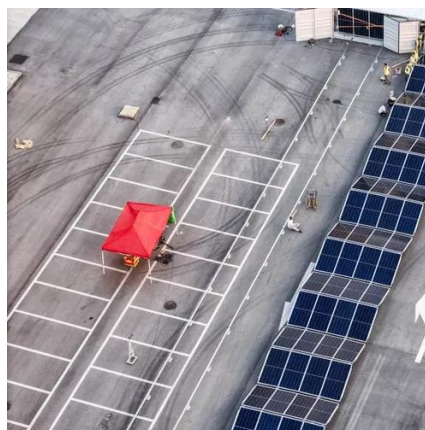
An electric battery is a source of electric power consisting of one or more electrochemical cells with external connections [1] for powering electrical ...





Battery Charge And Discharge Calculator , Charge Time, Run ...

The Battery Charge and Discharge Calculator serves as a tool for anyone seeking to optimize energy management. This calculator enables you to accurately estimate the ...



HOW LONG DOES A BATTERY TAKE TO CHARGE AND ...

You can use the battery charge time calculator to find the time required to fully charge the dead battery. If you use a battery backup for a home or a solar generator for off-grid living, using a ...

Understanding the Lithium-Ion Battery Charging ...

Unlike lead-acid, lithium-ion does not use float charging or trickle charging. Once the charge voltage threshold is reached and the ...

FLEXIBLE SETTING OF MULTIPLE WORKING MODES



Understanding the Lithium

When a new lithium - ion battery is produced, its internal electrochemical reactions need to be stabilized. The aging cabinet achieves this by applying a precisely regulated ...



How does a cabinet battery work?

Over time, individual cells may charge and discharge at different rates, leading to an imbalance. The BMS detects these imbalances and redistributes the charge among the ...



How Long Does It Take to Charge a Battery? 7 Factors to Consider

How long does it take to charge a battery by running an engine? Learn the factors and why it's a risky bet for your machine's alternator.

How does a cabinet battery work?

Over time, individual cells may charge and discharge at different rates, leading to an imbalance. The BMS detects these ...



[Battery Charge And Discharge Calculator . Charge ...](#)

The Battery Charge and Discharge Calculator serves as a tool for anyone seeking to optimize energy management. This calculator ...



Contact Us

For inquiries, pricing, or partnerships:

<https://www.sccd-sk.eu>

Phone: +32 2 808 71 94

Email: info@sccd-sk.eu

Scan QR code for WhatsApp.

