



# How many components can be connected in series with a micro inverter





## Overview

---

Two panels are connected by the microinverters, which may produce up to 600W at 240V. They have polarized connectors that are industry standard on the DC side and a daisy-chained connector system on the AC side, making them plug-and-play. One 20A circuit may support a maximum of.

Two panels are connected by the microinverters, which may produce up to 600W at 240V. They have polarized connectors that are industry standard on the DC side and a daisy-chained connector system on the AC side, making them plug-and-play. One 20A circuit may support a maximum of.

Or can I combine a 9 IQ7A branch and 2 IQ7A branch in a roof top junction box (SOLADECK) That would be a total of 11 IQ7A which is in line with Maximum IQ Micros per AC branch circuit. Thanks Yes, that will work. It will definitely cut down on voltage rise issues. I assume I will not need a IQ.

Micro inverters are a vital component of modern solar panel systems, offering enhanced efficiency and flexibility compared to traditional string inverters. A clear understanding of the micro inverter connection diagram is crucial for successful installation, maintenance, and troubleshooting. This.

A micro inverter is a small device that connects to the solar panel system. The key role of the micro inverter is to convert DC (direct current) from panels to AC (alternating current). It allows users to track the performance of each panel in real-time. As the demand for solar energy solutions.

A micro inverter is made up of a few crucial components, including: 1. DC Input This solar panel, which produces DC electricity, is connected to the microinverter. 2. Inverter Circuit The inverter circuit, sometimes known as the brain of the micro inverter, converts DC into AC power. 3. AC Output.

A microinverter is a device used in solar power systems that converts the direct current (DC) generated by a single solar module into alternating current (AC) that can be used to power homes and businesses. Unlike traditional string inverters, which are connected to multiple modules, microinverters.

An inverter is a device that converts direct current (DC) to alternating current (AC)



at the specified voltage and frequency. Inverters accomplish this by utilizing thyristors with forced commutation or other semiconductor devices such as BJT, MOSFET, IGBT, and so on. Inverters are grouped into.



## How many components can be connected in series with a micro inverter

### Lithium battery parameters

Product capacity: 100Ah

Product size: 135\*197\*35mm

Product weight: 1.82kg

Product voltage: 3.2V

internal resistance: within 0.5



### Do all Microinverters on one branch circuit have to be wired in series

You don't need a Combiner, but you'll want the production and consumption CT's, as well as IQ Gateway (Envoy), so the Combiner gives you all the components in a single package.

### Hoymiles Knowledge Base: Your Microinverter Questions Answered

You can find out how many microinverters can be placed in a branch by referring to the Maximum units per branch section of the microinverter datasheet. You can also easily ...



### [How to Wire Solar Panels With Microinverters](#)

Some microinverters take two panels, and some can take four. When placing panels on a rooftop, the number of panels on each section ...

### [A Simplified Diagram of Micro Inverter Wiring](#)

To perform this conversion, a micro inverter consists of several key components. 1. Power electronics. The power electronics component of a



micro inverter is responsible for converting ...



### Can I run 2 panels in a series on one micro-inverter if the volts ...

I currently have solar panels that are 225 watt, 29.5 volt (pmax), 7.63 amps (pmax imp). It seems to me that if I put 2 of my panels in series that they would be under the specs that the Enphase ...

### Microinverters: What you need to know

While traditional string inverters connect multiple panels to a single inverter, microinverters operate at the individual panel level. They can optimize the conversion process ...



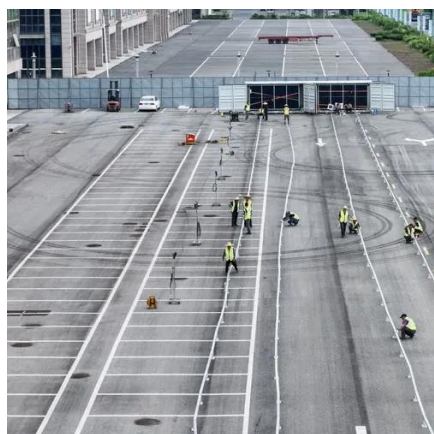
### Can I run 2 panels in a series on one micro ...

I currently have solar panels that are 225 watt, 29.5 volt (pmax), 7.63 amps (pmax imp). It seems to me that if I put 2 of my panels in series that they ...



## Microinverters: What you need to know

While traditional string inverters connect multiple panels to a single inverter, microinverters operate at the individual panel level. They ...



## Do all Microinverters on one branch circuit have to ...

You don't need a Combiner, but you'll want the production and consumption CT's, as well as IQ Gateway (Envoy), so the Combiner gives you all the ...

## Micro Inverter: Everything You Need to Know - Hinen

Micro inverters are different from string inverters which connect several panels in series; a solar micro inverter can be installed ...



## How to Wire Solar Panels With Microinverters

Some microinverters take two panels, and some can take four. When placing panels on a rooftop, the number of panels on each section will influence how many ...



## [Hoymiles Knowledge Base: Your Microinverter ...](#)

You can find out how many microinverters can be placed in a branch by referring to the Maximum units per branch section of the ...



## **Micro Inverter Wiring Diagram**

Before moving on to the wiring diagrams, let's first clearly understand what a micro-inverter is. Traditional solar power systems utilize a single central inverter to convert the DC electricity ...

## **Micro Inverter Connection Diagram**

A clear understanding of the micro inverter connection diagram is crucial for successful installation, maintenance, and troubleshooting. This article provides a ...



## [Can You Connect Inverters in Series?](#)

In this article, let us learn about whether can you connect inverters in series and if so, then how to connect 2 inverters in series along with the operation of a series inverter.



## [Can You Connect Inverters in Series?](#)

In this article, let us learn about whether can you connect inverters in series and if so, then how to connect 2 inverters in series ...



## [Micro Inverter: Everything You Need to Know - Hinen](#)

Micro inverters are different from string inverters which connect several panels in series; a solar micro inverter can be installed on 4 panels to operate independently thus ...

### **Micro Inverter Wiring Diagram**

Before moving on to the wiring diagrams, let's first clearly understand what a micro-inverter is. Traditional solar power systems utilize a single central ...





## Contact Us

---

For inquiries, pricing, or partnerships:

<https://www.sccd-sk.eu>

Phone: +32 2 808 71 94

Email: [info@sccd-sk.eu](mailto:info@sccd-sk.eu)

Scan QR code for WhatsApp.

