



How many kilowatts does a lead-acid battery in a solar container communication station have





Overview

A typical lithium-ion solar battery can store between 10 to 15 kilowatt-hours (kWh) of energy, while lead-acid batteries usually hold up to 7 kWh. The storage capacity depends on battery type and size. Why is battery capacity important?

A typical lithium-ion solar battery can store between 10 to 15 kilowatt-hours (kWh) of energy, while lead-acid batteries usually hold up to 7 kWh. The storage capacity depends on battery type and size. Why is battery capacity important?

Our Solar Battery Bank Calculator is a user-friendly and convenient tool that takes the guesswork out of estimating the appropriate battery bank size for your solar energy needs. By inputting your daily or monthly power consumption, desired backup days, battery type, and system voltage, you can.

Fun fact: Lead-acid batteries have powered everything from 19th-century telegraph systems to today's solar farms. Not exactly a flashy tech, but as reliable as your grandma's cast-iron skillet! [What Does "100Ah" Really Mean?](#)

Imagine your battery as a water tank. Capacity (measured in amp-hours/Ah).

Calculate the perfect battery capacity for your solar system, inverter, or car with accurate battery size calculator For your 5kWh daily usage and 8 hours backup, you need a 180.5Ah 12V Lithium-ion battery. We recommend a 200Ah commercial size. Solar battery storage systems allow you to store.

Storage Capacity Matters: Choosing the right battery capacity impacts energy independence; options range from 7 kWh in lead-acid batteries to 10-15 kWh in lithium-ion models. Factors Influencing Capacity: Battery size, type, and environmental conditions (like temperature) all affect the amount of.

This reliable and lightweight solar generator has an in-built inverter in the portable power station and a solar panel that uses high-efficiency PV cells to capture and convert sun energy into electricity. Based on your energy consumption, you can



choose the right size and capacity solar generator.

How to Calculate Battery Capacity for a Solar System?

To calculate battery capacity for a solar system, divide your total daily watt-hours by depth of discharge and system voltage to get amp-hours needed. Battery capacity depends on your daily power use, backup goals, and system voltage. Use the. What are lead acid batteries for solar energy storage?

Lead acid batteries for solar energy storage are called “deep cycle batteries.” Different types of lead acid batteries include flooded lead acid, which require regular maintenance, and sealed lead acid, which don’t require maintenance but cost more.

Are deep cycle lithium ion batteries better than lead acid batteries?

Lead acid batteries are proven energy storage technology, but they’re relatively big and heavy for how much energy they can store. Deep cycle lithium ion batteries are more expensive than nearly all lead acid batteries, but are much more compact and maintenance-free.

What are SLA batteries?

This vent is controlled by a valve, which is why SLA batteries are sometimes also called “valve-regulated lead acid”, or VRLA batteries. As referenced above, there are two main kinds of SLA batteries: Absorbent Glass Mat (AGM) and gel batteries.

How are SLI batteries made?

SLI batteries are made with thin, porous lead plates that are designed to draw as much electricity as possible from the electrolyte at one time. That surge of energy is called current, and it is measured in amps. Automotive batteries are made using 6 cells wired in series.



How many kilowatts does a lead-acid battery in a solar container com

GRADE A BATTERY

LiFePO4 battery will not burn when overcharged, over discharged, overcurrent or short circuited and can withstand high temperatures without decomposition.



[Should You Choose A Lead Acid Battery For Solar ...](#)

Whereas a deep cycle battery bank made up of flooded lead acid batteries that could discharge up to 10.4 kWh per day would take up 8.2 cubic feet ...

[The Complete Off Grid Solar System Sizing Calculator](#)

Generally, Lithium batteries have an optimal DOD of 80 to 100%, and Lead-Acid batteries an optimal DOD of 30 to 50%.



[Solar power storage: How many batteries do you ...](#)

If you use approximately 30 kilowatt-hours (kWh) of electricity per day, you'll want to install 15 kWh of solar battery capacity. If your solar ...

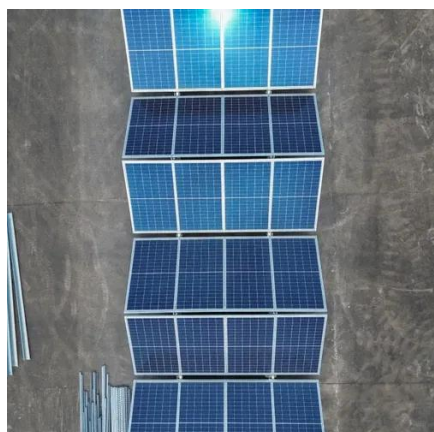


[How to Calculate Battery Capacity for Solar System](#)

To calculate battery capacity for a solar system, divide your total daily watt-hours by depth of discharge and system voltage to get amp-hours



needed. Battery capacity depends ...



Solar power storage: How many batteries do you need?

If you use approximately 30 kilowatt-hours (kWh) of electricity per day, you'll want to install 15 kWh of solar battery capacity. If your solar batteries have usable capacities of 8 kWh ...

Solar Battery Bank Calculator

Use our solar battery bank calculator for accurate battery size estimates. Perfect for determining the right capacity for lead-acid, lithium, & LiFePO4 battery.



Best Battery Size Calculator For Solar And Off-Grid Systems

For your 5kWh daily usage and 8 hours backup, you need a 180.5Ah 12V Lithium-ion battery. We recommend a 200Ah commercial size. Solar battery storage systems allow you to store ...



[How Many kWh Can a Solar Battery Store to Maximize Your ...](#)

A typical lithium-ion solar battery can store between 10 to 15 kilowatt-hours (kWh) of energy, while lead-acid batteries usually hold up to 7 kWh. The storage capacity depends ...



[Should You Choose A Lead Acid Battery For Solar Storage?](#)

Whereas a deep cycle battery bank made up of flooded lead acid batteries that could discharge up to 10.4 kWh per day would take up 8.2 cubic feet on the floor, require regular maintenance, ...

[Solar Battery Calculator: How to Size Your Solar Panels, ...](#)

Assume that the daily energy needed is 5kWh. Now, the production ratio is 1.5 (assuming a sunny location), and panel wattage is 350W (0.35kW); putting the values in the above formula: ...



[How Much Energy Does a Solar Battery Store? A Complete ...](#)

A typical solar battery stores around 10 kilowatt-hours (kWh) of energy. To ensure grid independence, you might need two to three batteries to meet your energy usage when ...



Solar Energy Storage: Unlocking Lead-Acid Battery Capacity for ...

Capacity (measured in amp-hours/Ah) is how much "water" it holds. But here's the kicker - you can't actually use all that "water" without damaging the tank!



[The Complete Off Grid Solar System Sizing ...](#)

Generally, Lithium batteries have an optimal DOD of 80 to 100%, and Lead-Acid batteries an optimal DOD of 30 to 50%.

[How to Calculate Battery Capacity for Solar ...](#)

To calculate battery capacity for a solar system, divide your total daily watt-hours by depth of discharge and system voltage to get ...





Contact Us

For inquiries, pricing, or partnerships:

<https://www.sccd-sk.eu>

Phone: +32 2 808 71 94

Email: info@sccd-sk.eu

Scan QR code for WhatsApp.

