



How many meters is a 630 watt solar panel





Overview

A: A 700-watt solar panel is a large, commercial-grade unit, typically measuring around 2.4 metres by 1.3 metres. Q: What is the size of a 3kW solar panel?

A: A single 3kW solar panel does not exist.

A: A 700-watt solar panel is a large, commercial-grade unit, typically measuring around 2.4 metres by 1.3 metres. Q: What is the size of a 3kW solar panel?

A: A single 3kW solar panel does not exist.

630 Watt Solar panels' range of prices, dimensions, sizes, voltage output, specifications datasheets Introducing the HS-210-B120DS615-635 solar panel by Huasun Solar, a [.] Too many choices of suppliers and products?

Let our team find suppliers for you, for free! Check out other solar module.

For example, a 6.6 kW solar system typically consists of 20 panels each delivering 330W of power. Solar Panel Wattage Divide the average daily wattage usage by the average sunlight hours to measure solar panel wattage. Moreover, panel output efficiency directly impacts watts and the system's.

Wattage of solar panels varies widely depending on technology and size, 2. Standard panels typically generate between 250 to 400 watts per meter, 3. The efficiency of solar cells plays a crucial role in determining wattage, 4. Environmental factors and installation angles can impact overall.

Example: 5kW solar system is comprised of 50 100-watt solar panels. Alright, your roof square footage is 1000 sq ft. Can you put a 5kW solar system on your roof?

For that, you will need to know what size is a typical 100-watt solar panel, right?

To bridge that gap of very useful knowledge needed.

Standard residential solar panels are typically around 5.8 feet long by 3.5 feet wide and weigh between 40 to 50 pounds. However, the exact dimensions depend heavily on the panel's technology, wattage, and the manufacturer's design.

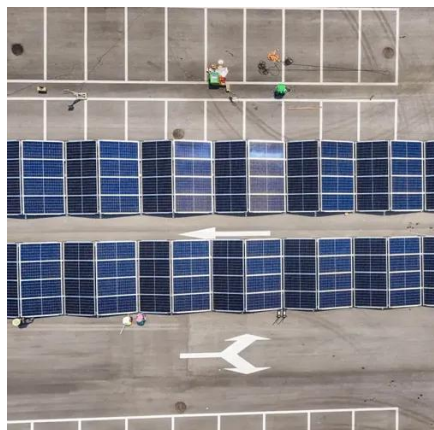


Understanding these specifications is crucial for determining roof.

To determine how many watts a solar panel generates per square meter, one can assert 1. Solar panels output between 150 to 300 watts per square meter, 2. The efficiency of solar technology affects power generation, 3. Sunlight intensity varies with location and time, 4. Energy production is.



How many meters is a 630 watt solar panel

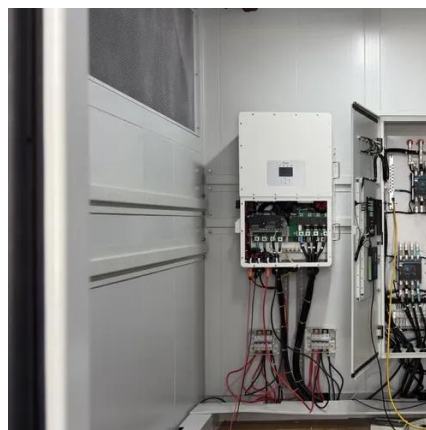


[Solar Panel Sizes and Wattage Explained](#)

Moreover, solar panel size per kW and watt calculations are estimates that may vary depending on panel efficiency, shading, and orientation. For specific sizing and ...

[Standard Solar Panel Sizes And Wattages \(100W ...](#)

To bridge that gap of very useful knowledge needed, we have compared and averaged the sizes of 100-watt to 500-watt solar panels available on the ...



[Solar Panel Output Calculator , Get Maximum ...](#)

Input your solar panel system's total size and the peak sun hours specific to your location, this calculator simplifies the complex ...

PVWatts Calculator

NREL's PVWatts ® Calculator Estimates the energy production of grid-connected photovoltaic (PV) energy systems throughout the world. It allows homeowners, small building owners, ...



[How many watts per meter of solar panel .NenPower](#)

Most commonly, solar panels fall within the range of 250 to 400 watts per meter. This will depend on the panel's size, with more ...



[Solar Panel Output Calculator , Get Maximum Power Output](#)

Input your solar panel system's total size and the peak sun hours specific to your location, this calculator simplifies the complex process of estimating the energy your solar ...



[How many watts is a solar panel per meter?](#)

Typically, solar panels yield between 150 to 300 watts per square meter under optimal conditions. The wattage primarily derives ...





630 Watt Solar panels for sale , Prices, dimensions, weight, ...

630 Watt Solar panels' range of prices,
dimensions, sizes, voltage output, specifications
datasheets



Solar Panel Sizes and Wattage Explained

Moreover, solar panel size per kW and watt
calculations are estimates that may vary
depending on panel efficiency, shading, and ...

How many watts per meter of solar panel , NenPower

Most commonly, solar panels fall within the range
of 250 to 400 watts per meter. This will depend on
the panel's size, with more efficient models
producing higher watt outputs.



Solar Panel Watts Per Square Meter Explained

Learn how to measure solar panel efficiency using
solar panel watts per square meter with this
comprehensive guide.





[How many watts is a solar panel per meter? , NenPower](#)

Typically, solar panels yield between 150 to 300 watts per square meter under optimal conditions. The wattage primarily derives from the efficiency of the solar cells and the ...

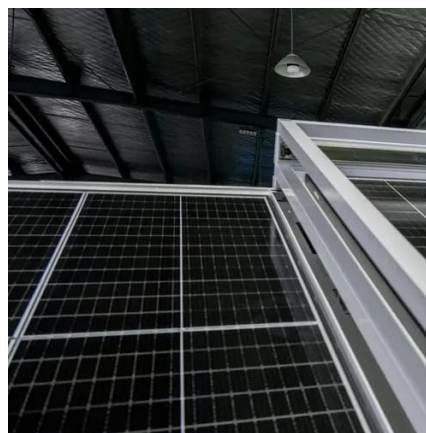


Solar Panel Calculator , Lowe's

To calculate the number of solar panels your home needs, divide your home's annual energy usage, which is measured in kilowatt-hours (kWh), by your local production ...

Solar Panel Calculator , Lowe's

Up to 6% cash back. To calculate the number of solar panels your home needs, divide your home's annual energy usage, which ...



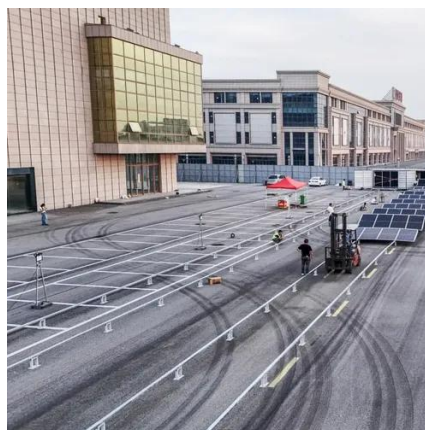
[The Ultimate Guide to Solar Panel Size, Weight](#)

A: A typical residential solar panel is about 1.7 metres by 1 metre and weighs around 20 kg. Sizes and weights vary by manufacturer ...



[Standard Solar Panel Sizes And Wattages \(100W-500W ...](#)

To bridge that gap of very useful knowledge needed, we have compared and averaged the sizes of 100-watt to 500-watt solar panels available on the market. The goal here is to get to the ...



The Ultimate Guide to Solar Panel Size, Weight & Wattage (2025)

A: A typical residential solar panel is about 1.7 metres by 1 metre and weighs around 20 kg. Sizes and weights vary by manufacturer and wattage.
Q: What are the standard ...





Contact Us

For inquiries, pricing, or partnerships:

<https://www.sccd-sk.eu>

Phone: +32 2 808 71 94

Email: info@sccd-sk.eu

Scan QR code for WhatsApp.

