



# How many square meters are enough for home solar lights





## Overview

---

These lights are typically spaced apart to create a uniform illumination, effectively covering a range of 10 to 15 square meters. Moreover, their design ensures they blend seamlessly into the environment while serving a practical purpose.

These lights are typically spaced apart to create a uniform illumination, effectively covering a range of 10 to 15 square meters. Moreover, their design ensures they blend seamlessly into the environment while serving a practical purpose.

Standard solar pathway lights usually illuminate approximately 10 to 15 square meters; 2. Solar floodlights can cover a much larger area of 30 to 100 square meters, depending on their wattage and placement; 3. Solar garden lights usually illuminate around 5 to 10 square meters; 4. The effective.

Most roof angles can accommodate solar systems effectively, but having limited roof space poses a more significant constraint. A standard solar panel typically takes up about 1.7–2 square meters. A common 6kW system, which uses around 15 panels, requires approximately 28–32 square meters—excluding.

In order to calculate the solar lighting requirements for a given area, you need to consider several factors, including the size of the area, the required illumination level, the efficiency of the lighting fixtures, and the solar panel and battery specifications. Here's a step-by-step guide to.

A typical home solar panel is about 3 feet wide by 5.5 feet long, occupying an area of roughly 17.5 square feet (sq ft). On average, the amount of required roof space for a set of home solar panels is between 300 sq ft and 500 sq ft total. When looking into a system for your home, the amount of.

The average solar panel size is approximately 1.6 square meters (17.2 square feet). This measurement can vary slightly based on the manufacturer and the specific model of the panel. Most standard residential solar panels are around 65 inches by 39 inches, which translates to about 1.6 square.

How many square meters can a 500w solar light illuminate?

The ability of a 500-watt solar light to illuminate a specific area depends on



several factors including the type of solar light, its design, brightness output measured in lumens, and the environmental conditions like terrain and reflective.



## How many square meters are enough for home solar lights

---



### [How many square meters can a 500w solar light illuminate?](#)

Conducting a basic calculation can help determine how many square meters a 500-watt solar light can effectively cover. For instance, if the light produces 70,000 lumens and is ...

### [How many square meters is solar light? . NenPower](#)

When considering the dimensions of area illuminated by solar light, it's necessary to evaluate factors involving solar angle, intensity, and any obstruction that will hinder energy ...



### [How Many Square Meters is a Solar Panel: Key Insights](#)

Space Requirements: A typical residential solar system may require around 20-30 square meters of roof space to generate enough electricity for an average household.

### [How Much Solar do I Need for My House?](#)

A standard solar panel typically takes up about 1.7-2 square meters. A common 6kW system, which uses around 15 panels, requires ...



### How many square meters does the solar light line require?

The ideal number of solar lights for a garden area is influenced by the total square meters to be illuminated and the dimmer areas within the garden. To determine this, assess ...



### Understanding Solar Panel Sizes for Optimal Use

Typically, a standard solar panel measures about 1.6 square meters (approximately 17 square feet). These panels are designed to convert sunlight into electricity ...



**TAX FREE**

**Product Model**  
 HJ-ESS-215A(100KW/215KWh)  
 HJ-ESS-115A(50KW 115KWh)

**Dimensions**  
 1600\*1280\*2200mm  
 1600\*1200\*2000mm

**Rated Battery Capacity**  
 215KWH/115KWH

**Battery Cooling Method**  
 Air Cooled/Liquid Cooled

### **How Much Solar do I Need for My House? Complete Guide to ...**

A standard solar panel typically takes up about 1.7-2 square meters. A common 6kW system, which uses around 15 panels, requires approximately 28-32 square ...



## [Soli Lighting Solar Lighting Calculation / Sizing](#)

In order to calculate the solar lighting requirements for a given area, you need to consider several factors, including the size of the area, the required illumination level, the efficiency of the ...

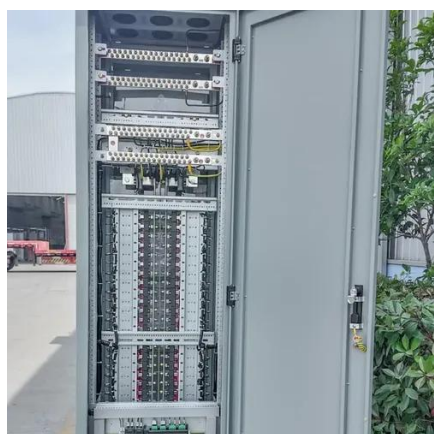


## [How much area is needed for solar panel installation](#)

A typical home solar panel is about 3 feet wide by 5.5 feet long, occupying an area of roughly 17.5 square feet (sq ft). On average, the amount of required roof space for a set of ...

## [How Many Square Meters Is One Solar Panel?](#)

Standard residential panels are around 1.6 meters by 1 meter, allowing efficient coverage of roof space without overwhelming the structure. Commercial Use: Businesses ...



## [Soli Lighting Solar Lighting Calculation / Sizing](#)

In order to calculate the solar lighting requirements for a given area, you need to consider several factors, including the size of the area, the ...



## [How many square meters is a set of solar lights , NenPower](#)

Garden lights, often small and decorative, usually illuminate landscaping features or patios, accounting for about 5 to 10 square meters of coverage. They serve both functional ...





## Contact Us

---

For inquiries, pricing, or partnerships:

<https://www.sccd-sk.eu>

Phone: +32 2 808 71 94

Email: [info@sccd-sk.eu](mailto:info@sccd-sk.eu)

Scan QR code for WhatsApp.

