



# How many square meters are required for a 250w voltage solar panel





## Overview

---

When determining how much area you will need to install 250 watt solar panels, it is important to consider the fact that each panel produces approximately 1000 watts of power. This means that for each kilowatt hour of electricity produced, 4 square meters of space is required.

When determining how much area you will need to install 250 watt solar panels, it is important to consider the fact that each panel produces approximately 1000 watts of power. This means that for each kilowatt hour of electricity produced, 4 square meters of space is required.

Table 3: Common Spacing and Layout Parameters for PV Arrays Formulas for Calculating Total Area Required for Solar Panel Installation The fundamental equation for determining the total area required involves calculating the area occupied by the panels and the additional space for structural and.

A typical home solar panel is about 3 feet wide by 5.5 feet long, occupying an area of roughly 17.5 square feet (sq ft). On average, the amount of required roof space for a set of home solar panels is between 300 sq ft and 500 sq ft total. When looking into a system for your home, the amount of.

When determining how much area you will need to install 250 watt solar panels, it is important to consider the fact that each panel produces approximately 1000 watts of power. This means that for each kilowatt hour of electricity produced, 4 square meters of space is required. Therefore, if you are.

Peak sun hours are the equivalent number of hours per day when solar irradiance averages 1,000 watts per square meter. This varies by location and season. How much roof space do solar panels need?

A typical 400W solar panel requires about 1.7 square meters (18.3 square feet) of space. The.

A 250w solar panel usually contains 32 cells and can produce a 14.72 voltage output. Each cell in a 250w solar panel produces roughly 0.46 volts. A standard 60 cell 250w solar panel is roughly 3.25 feet by 5.5 feet and. A 250w solar panel usually contains 32 cells and can produce a 14.72 voltage.



The Solar Power Roof Area Calculator is a valuable tool designed to help users estimate the required roof area for installing solar panels. Its primary use is to determine how much space is necessary on a roof to accommodate a specific amount of solar power generation. This calculator is essential.



## How many square meters are required for a 250w voltage solar panel

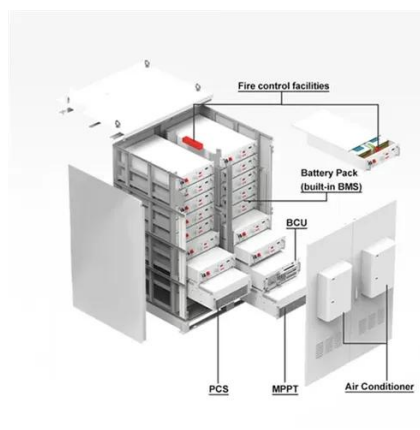


### Solar Panel Calculator

Calculate solar panel requirements for your home with our free solar calculator. Includes system size, number of panels, and area calculations.

### [Guide to Solar Panel Sizes & Dimensions \(October ...](#)

Solar panel sizes and wattage range from 250W to 450W, taking up 1.6 to 2 square metres per panel. One of the most important ...



### Solar Panel Square Footage Calculator (Guide for Solar Sizing

The article highlights the importance of calculating the number of panels needed for a successful installation and provides a step-by-step guide for determining the number of panels required ...



### [How much area is needed for solar panel](#)

...

To help you decide if your property is suitable for solar, this guide outlines roof space requirements and breaks down how to calculate ...



## Solar Power Roof Area Calculator , Roof Space Needed for a Solar ...

The Solar Power Roof Area Calculator is a valuable tool designed to help users estimate the required roof area for installing solar panels. Its primary use is to determine how ...

## The Power of 250 Watt Solar Panels

When determining how much area you will need to install 250 watt solar panels, it is important to consider the fact that each panel produces approximately 1000 watts of power. ...



## Solar Panel Calculator

The solar panel calculator is a tool that helps users estimate the requirements for a solar panel system based on various input parameters. It takes into account factors such as the daily ...



## [Total Area Required for Solar Panel Installation ...](#)

Calculate the total area needed for your solar panel installation quickly and accurately with our easy-to-use solar panel area ...



## [How many square meters are required for a 250w voltage ...](#)

A solar power per square meter calculator takes details regarding these factors and then gives the accurate output generated by the solar panel per square meter.

## **Solar Panel Square Footage Calculator - Estimate Your Solar ...**

A Solar Panel Square Footage Calculator is an online tool that calculates the total area your solar panels will occupy. By entering the number of panels, their length and width, and the average ...



## **The Power of 250 Watt Solar Panels**

When determining how much area you will need to install 250 watt solar panels, it is important to consider the fact that each panel ...



## [Total Area Required for Solar Panel Installation Calculator](#)

Calculate the total area needed for your solar panel installation quickly and accurately with our easy-to-use solar panel area calculator.

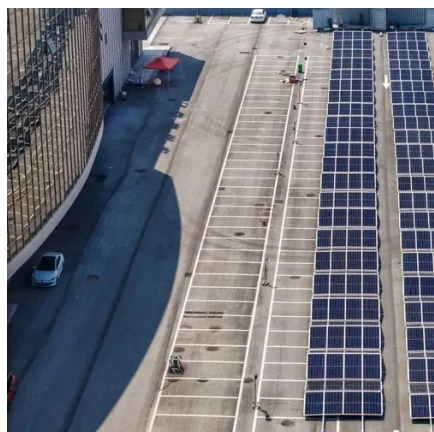


## [Solar Power Roof Area Calculator , Roof Space ...](#)

The Solar Power Roof Area Calculator is a valuable tool designed to help users estimate the required roof area for installing solar ...

## [How much area is needed for solar panel installation](#)

To help you decide if your property is suitable for solar, this guide outlines roof space requirements and breaks down how to calculate the area needed for your home solar ...



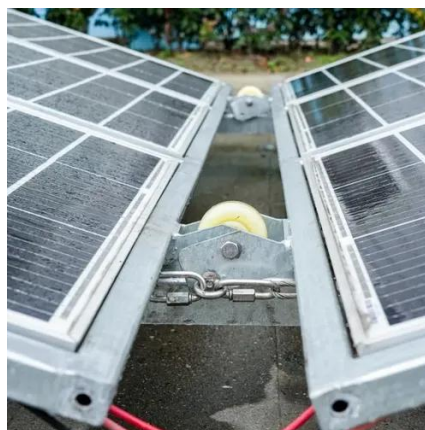
## [Solar Panel Square Footage Calculator \(Guide for ...](#)

The article highlights the importance of calculating the number of panels needed for a successful installation and provides a step-by-step guide for ...



## Solar Panel Square Footage Calculator - Estimate Your Solar Panel ...

A Solar Panel Square Footage Calculator is an online tool that calculates the total area your solar panels will occupy. By entering the number of panels, their length and width, and the average ...



## [Guide to Solar Panel Sizes & Dimensions \(October 2025\)](#)

Solar panel sizes and wattage range from 250W to 450W, taking up 1.6 to 2 square metres per panel. One of the most important things to consider when getting solar ...

## How many square meters are required for a 250w voltage photovoltaic panel

A solar power per square meter calculator takes details regarding these factors and then gives the accurate output generated by the solar panel per square meter.





## Contact Us

---

For inquiries, pricing, or partnerships:

<https://www.sccd-sk.eu>

Phone: +32 2 808 71 94

Email: [info@sccd-sk.eu](mailto:info@sccd-sk.eu)

Scan QR code for WhatsApp.

