



# How many volts are usually available for mobile outdoor power batteries





## Overview

---

Most mobile outdoor power supplies use lithium-ion or LiFePO<sub>4</sub> batteries, with voltages ranging from 12V to 48V. Here's a quick comparison: 12V systems: Ideal for small devices like phones, LED lights, or mini-fridges. 24V systems: Suits medium loads such as power tools or camping.

Most mobile outdoor power supplies use lithium-ion or LiFePO<sub>4</sub> batteries, with voltages ranging from 12V to 48V. Here's a quick comparison: 12V systems: Ideal for small devices like phones, LED lights, or mini-fridges. 24V systems: Suits medium loads such as power tools or camping.

Lawn and garden batteries are available in a range of voltages, from as low as 12 volts to as high as 120 volts or more. The choice of voltage depends on the specific application and the power requirements of the tool or device being used. For most residential lawn and garden applications.

Common voltage ratings include 6 volts for small tools, 12 volts for most lawnmowers, and 24 volts for specialized, high-power applications. Different types of batteries—lead-acid, lithium-ion, and nickel-cadmium—offer various benefits and voltages; selecting the right type enhances performance.

If you've ever wondered, "How many volts are the batteries in a mobile outdoor power supply?

", you're not alone. Outdoor enthusiasts, campers, and even professionals in fields like construction or emergency services need reliable power solutions. Let's break down the technical details while keepin.

Now, when it comes to outdoor portable batteries, the output voltage can vary quite a bit. Most common outdoor portable batteries have an output voltage of either 12V or 24V. The 12V batteries are the more popular choice for smaller devices like smartphones, tablets, LED lights, and small camping.

Topics we will cover in this guide include voltage, amp hours, specialty tools, outdoor power equipment and more. **SHOP CORDLESS BATTERIES NOW** When looking into cordless battery-powered tools, you may wonder: What projects do you expect to take on?



What is your budget?

How often will the tools be.

Voltage Specifications: These batteries typically operate at a nominal voltage of 6V or 12V. While 12V batteries are most commonly used for larger equipment like mowers, smaller devices may utilize 6V batteries. Lithium-ion batteries are gaining popularity due to their lightweight design and longer. How much power does a mobile phone battery need?

$$P = VI \quad P = (12.0 \text{ V}) (0.9 \text{ A}) \quad P = (12.0 \text{ J/C}) (0.9 \text{ C/s}) \quad P = 10.8 \text{ J/s} \quad P = 10.8 \text{ W}$$

Therefore, the power which the battery requires of the mobile phone is 10.8 W.

Question- A resistor has a potential difference of 24.0 V and radiates heat. The rate at which thermal energy produces is 16.0 W. Find out the resistance value.

Do outdoor power tools need batteries?

This is often the case with professional outdoor power tool batteries. Tools vary as to how much power they draw. An impact driver uses less power than a drill and they both use less power than an angle grinder. The capacity and number of batteries needed will be determined by which tools are being used and how long they are in operation.

Where can I find the best battery for power tools?

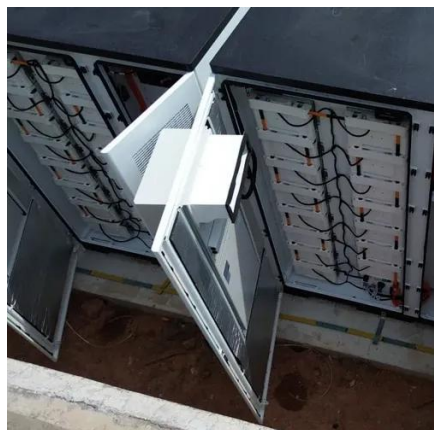
If possible, visit The Home Depot to see and hold the tools. Firsthand experience will help determine what is the best battery for power tools for your unique situation. When it comes to battery tools, everyone wants superhero capabilities.

What is battery pack storage capacity?

Battery pack storage capacity is measured in amp hours. Amp hours is abbreviated "AH." Amp hours relate to the physical size of the battery because higher capacities are achieved by adding more of the internal cells to the battery pack.



## How many volts are usually available for mobile outdoor power batterie



### [What is the output voltage of an outdoor portable battery?](#)

Most common outdoor portable batteries have an output voltage of either 12V or 24V. The 12V batteries are the more popular choice for smaller devices like smartphones, tablets, LED ...

### [How many volts does a solar outdoor battery ...](#)

Solar outdoor batteries predominantly come in two voltage specifications: 12 volts and 24 volts. Each has unique attributes that ...



### [What Voltage Is a Lawn Mower Battery \(Explained\)](#)

These batteries are typically rated at 12 volts, which is sufficient to start the engine or power auxiliary components like lights or ignition systems. A 12-volt battery is robust, affordable, and ...



## Cordless Battery Buying Guide

Look at all available voltage ranges, covered later in this guide, to determine if 12 volt tools will work for you, or if you will benefit from the added power or versatility of 18 volts.



## Lawn Mower Battery Voltage: What You Need to ...

Most traditional riding lawn mowers use a 12-volt battery, while some older models and specialty equipment may operate with a 6-volt ...

## **How many volts does a solar outdoor battery have? , NenPower**

Solar outdoor batteries predominantly come in two voltage specifications: 12 volts and 24 volts. Each has unique attributes that dictate their effectiveness across different ...



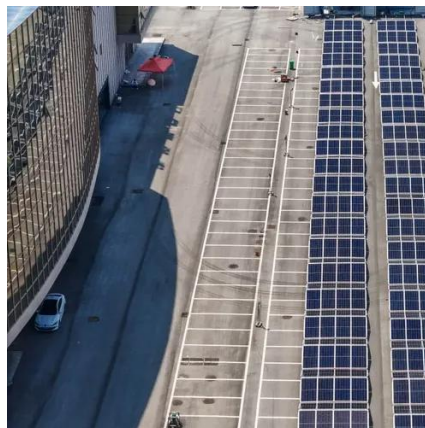
## How many volts is a lawn and garden battery

When we talk about energy sources for outdoor applications, it's important to recognize that they typically come in several voltage tiers. The most prevalent ratings include ...



## [How Many Volts Is a Lawn and Garden Battery: Essential ...](#)

Understanding the voltage of lawn and garden batteries is essential for optimal performance and efficiency of outdoor tools. Common voltage ratings include 6 volts for small ...



## **How Many Volts Are the Batteries in a Mobile Outdoor Power ...**

Typical Voltage Ranges for Outdoor Power Supplies Most mobile outdoor power supplies use lithium-ion or LiFePO4 batteries, with voltages ranging from 12V to 48V.

## [What Voltage Is a Lawn Mower Battery \(Explained\) ...](#)

These batteries are typically rated at 12 volts, which is sufficient to start the engine or power auxiliary components like lights or ignition systems. A 12 ...



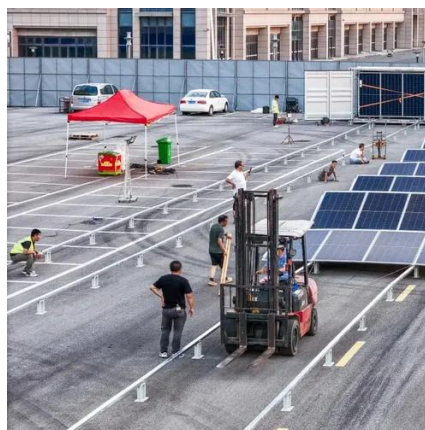
## [Lawn Mower Battery Voltage: What You Need to Know](#)

Most traditional riding lawn mowers use a 12-volt battery, while some older models and specialty equipment may operate with a 6-volt battery. Modern cordless electric mowers ...



## The Ultimate Guide to Lawn and Garden Battery Voltage: What ...

Voltage Specifications: Most lithium-ion lawn and garden batteries operate at a voltage between 36V and 40V, although you can find variations. This higher voltage allows for more powerful ...



## Choosing the Right Voltage for Your Lawn and Garden Battery: A

The most common voltage options for lawn and garden batteries are 12-volt, 24-volt, and 36-volt systems. These voltages are designed to power various types of equipment, ...



## Contact Us

---

For inquiries, pricing, or partnerships:

<https://www.sccd-sk.eu>

Phone: +32 2 808 71 94

Email: [info@sccd-sk.eu](mailto:info@sccd-sk.eu)

Scan QR code for WhatsApp.

