



How many volts is the 220 volt inverter





Overview

A 220V inverter is a power electronic device that converts direct current (DC) power into alternating current (AC) power at a voltage of approximately 220 volts.

A 220V inverter is a power electronic device that converts direct current (DC) power into alternating current (AC) power at a voltage of approximately 220 volts.

Question1: What is a 220 volt power inverter?

Answer 1: A 220 volt power inverter is a device that converts low-voltage DC (direct current) power to standard household AC (alternating current) power. It allows you to operate household appliances and electrical equipment using the power produced by.

One solution that has gained popularity is the 220 volt inverter, which converts direct current (DC) into alternating current (AC). This guide aims to provide an in-depth understanding of 220 volt inverters, their types, applications, and how to choose the right one for your needs. What is a 220.

A 220V inverter is a power electronic device that converts direct current (DC) power into alternating current (AC) power at a voltage of approximately 220 volts. These inverters are commonly used to power appliances that require a 220V or 240V AC power source when only a DC power source, such as a.

300watts continuous/600 peak. USB Port. Over temp, over load and low battery protection. Cables included. 220/230 VAC, 12VDC. AC amps - 5, DC amps - 25. This product is from a small business brand. Support small. Learn more At AIMS Power, our mission is to be leaders in the design and development.

This 200 watt car power inverter converts DC 12V vehicle power into AC 220V household power. It features four USB ports for charging multiple devices simultaneously, such as phones, tablets, and laptops. The built-in cooling fan ensures long-lasting, safe operation with low noise. Its lightweight.

Below is a comparative summary of top-rated inverters from Amazon, followed by detailed insights on their features and applications. Check Price on Amazon The Keenso 200W Car Power Inverter efficiently converts DC 12V vehicle power to AC



220V household power. It includes a built-in cooling fan that.



How many volts is the 220 volt inverter



Best 220 Volt Inverter Generators for Reliable Power Backup 2025

It outputs pure sine wave power at 220-230VAC with a single-phase 4200W capacity, designed for off-grid solar applications with a 120A MPPT solar charge controller. ...

[Inverter AC to DC Amperage Conversion](#)

...

Just enter your AC voltage and AC amperage into the fields below and we will do all the hard calculations for you. Note: This ...



[AIMS Power European 300 watt, 12 VDC, 220 Volt ...](#)

AIMS Power PE30012230S European 300-Watt 12 VDC to ...

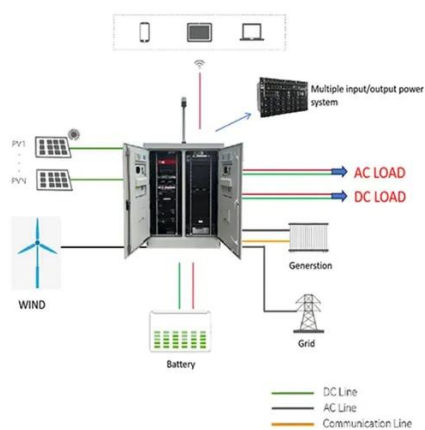
[The Only Inverter Size Chart You'll Ever Need](#)

We have created a comprehensive inverter size chart to help you select the correct inverter to power your ...



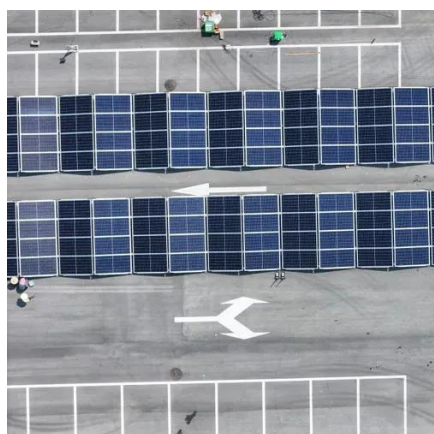
AIMS Power European 300 watt, 12 VDC, 220 Volt / 230 Volt ...

AIMS Power PE30012230S European 300-Watt 12 VDC to 220/230 VAC Pure Sine Power Inverter, 300W Continuous Power, 600W Surge Peak Power, USB Port, On/Off Switch, ...



Inverter AC to DC Amperage Conversion Calculator , Battery Stuff

Just enter your AC voltage and AC amperage into the fields below and we will do all the hard calculations for you. Note: This calculator includes the typical inefficiencies to give ...



[The Only Inverter Size Chart You'll Ever Need](#)

We have created a comprehensive inverter size chart to help you select the correct inverter to power your appliances.



What is a 220V Inverter? - Ova

A 220V inverter is a power electronic device that converts direct current (DC) power into alternating current (AC) power at a voltage of approximately 220 volts.

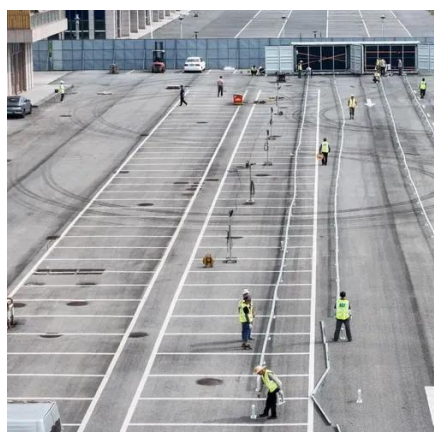


Buyer's Guide for 220 Volt Inverters , 220 Volt Appliances , 240 ...

12 Volt is used for extra low voltage power systems, but this type is not frequently used in common practice. 24 and 48 volt inverters are in general practices in now days.

Buyer's Guide for 220 Volt Inverters , 220 Volt Appliances , 240 Volt

12 Volt is used for extra low voltage power systems, but this type is not frequently used in common practice. 24 and 48 volt inverters are in general practices in now days.



Best 220 Volt Inverter Generators for Reliable Power Backup 2025

It outputs pure sine wave power at 220-230VAC with a single-phase 4200W capacity, designed for off-grid ...



220 Volt Inverter: The Ultimate Guide to Choosing the Right One

What is a 220 volt inverter? A 220 volt inverter converts DC power from batteries into 220V AC power, allowing you to run appliances when traditional power sources are ...



Best 220 Volt Power Inverters for Reliable Home and Vehicle Use

Verify the input voltage of the inverter matches your DC power source, such as 12V car battery or 24V solar system. The output voltage should meet the device ...

Understanding inverter voltage

A 12V to 240V inverter is a pivotal device designed to convert direct current (DC) power from a 12-volt battery into alternating current (AC) power with ...



Best 220 Volt Power Inverters for Cars, Homes, and Solar Systems

This inverter offers selectable input voltages from 12V to 72V DC to convert to 110V-120V or 220V-240V AC output. It comes with a soft start system, multiple safety ...



Understanding inverter voltage

A 12V to 240V inverter is a pivotal device designed to convert direct current (DC) power from a 12-volt battery into alternating current (AC) power with a nominal output of 240 volts.





Contact Us

For inquiries, pricing, or partnerships:

<https://www.sccd-sk.eu>

Phone: +32 2 808 71 94

Email: info@sccd-sk.eu

Scan QR code for WhatsApp.

