



How many watts can a solar panel drive





Overview

About 97% of solar panels quoted on the EnergySage Marketplace in 2025 are 400 to 460 watts—expect to see panel outputs in this range in your quotes. Your panels' actual output will depend on your roof's shading, orientation, and hours of sun exposure.

About 97% of solar panels quoted on the EnergySage Marketplace in 2025 are 400 to 460 watts—expect to see panel outputs in this range in your quotes. Your panels' actual output will depend on your roof's shading, orientation, and hours of sun exposure.

About 97% of home solar panels installed in 2025 produce between 400 and 460 watts, based on thousands of quotes from the EnergySage Marketplace. But wattage alone doesn't tell the whole story. In fact, efficiency matters more than wattage when comparing solar panels—a higher wattage can simply.

While solar panel systems start at 1 KW and produce between 750 and 850 Kilowatt hour (KwH) annually, larger homes and bigger households typically want to be on the higher end. A four-to-five-person household likely needs a four to five KW system. The roof size and condition, hours of peak sunlight.

A 100-watt panel can produce 100 watts per hour in direct sunlight. A 400-watt panel can generate 400 watts per hour under the same conditions. This doesn't mean they'll produce that amount all day, output varies with weather, shade, and panel orientation. Renogy 200W Portable Solar Panel, IP65.

Solar panels degrade slowly, losing about 0.5% output per year, and often last 25–30 years or more. Most residential panels in 2025 are rated 250–550 watts, with 400-watt models becoming the new standard. A 400-watt panel can generate roughly 1.6–2.5 kWh of energy per day, depending on local.

Because actual solar panel power output depends on more than just the wattage on the spec sheet. Efficiency, temperature, sunlight, shading, orientation, and even how the panels are tested all influence real performance. To make confident decisions, whether you're sizing a system, comparing.

How many watts can a 80w solar panel directly drive?



1. A typical 80W solar panel can directly drive appliances that require a total of 80 watts or less, with considerations for efficiency and environmental conditions. You must account for factors like solar energy conversion efficiency, inverter. How many watts can a solar panel produce?

For example: A 100-watt panel can produce 100 watts per hour in direct sunlight. A 400-watt panel can generate 400 watts per hour under the same conditions. This doesn't mean they'll produce that amount all day, output varies with weather, shade, and panel orientation.

How many watts can a 400 watt solar panel produce?

A 100-watt panel can produce 100 watts per hour in direct sunlight. A 400-watt panel can generate 400 watts per hour under the same conditions. This doesn't mean they'll produce that amount all day, output varies with weather, shade, and panel orientation. Solar Power Meter Digital Solar Energy Meter Radiation Measurement.

How much power does a home solar panel produce?

About 97% of home solar panels included in EnergySage quotes today have power output ratings between 400 and 460 watts. The most frequently quoted panels are around 450 watts, so we'll use this as an example.

What is solar wattage?

Wattage refers to the amount of electrical power a solar panel can produce under standard test conditions (STC), which simulate a bright sunny day with optimal solar irradiance (1,000 W/m²), a cell temperature of 25°C, and clean panels. In simpler terms, a panel's wattage rating tells you its maximum power output under ideal conditions.



How many watts can a solar panel drive

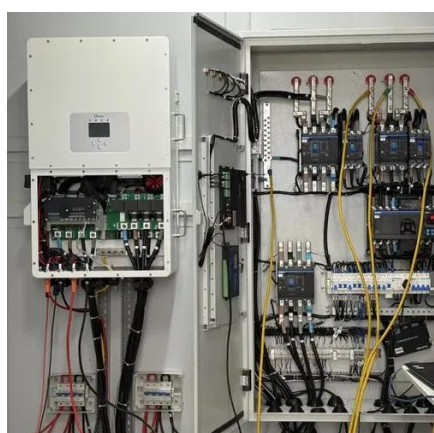


[How Much Watts Can a Solar Panel Produce: Myths & Facts](#)

Most residential solar panels available in the U.S. range from 250 to 400 watts per panel. Here's a breakdown of common wattage outputs: Standard Panels: Typically produce ...

[Solar Panel Wattage & Output Explained](#)

Most residential solar panels in 2025 are rated between 350W and 480W, while commercial modules can exceed 600W. How do manufacturers determine wattage? They test ...



[How Much Power Does A Solar Panel Produce?](#)

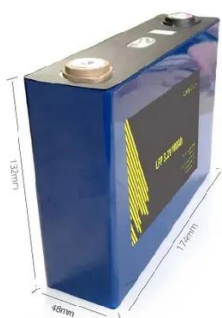
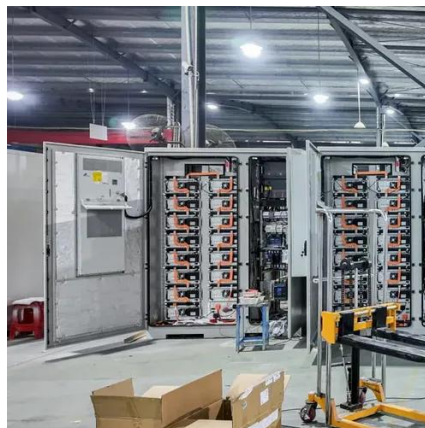
Most residential solar panels available in the U.S. range from 250 to 400 watts per panel. Here's a breakdown of common wattage outputs: Standard Panels: Typically produce ...

[Solar Panel Wattage Explained: How Many Watts Do You Need?](#)

Confused about solar panel wattage? Learn how many watts you need, how solar output works, and how to calculate the right solar setup for your



home, RV, or cabin.



How Much Power Does A Solar Panel Produce?

These days, the latest and best solar panels for residential properties produce between 250 and 400 Watts of electricity. While solar panel systems start at 1 KW and produce between 750 and

How many watts can a 80w solar panel directly drive?

A typical 80W solar panel can directly drive appliances that require a total of 80 watts or less, with considerations for efficiency and environmental conditions.



Solar Panel Wattage & Output Explained

Most residential solar panels in 2025 are rated between 350W and 480W, while commercial modules can exceed 600W. How do ...



[How Much Energy Does A Solar Panel Produce? , EnergySage](#)

About 97% of solar panels quoted on the EnergySage Marketplace in 2025 are 400 to 460 watts--expect to see panel outputs in this range in your quotes. Your panels' ...



[Understanding Solar Panel Wattage Ratings](#)

For residential installations, panels usually range between 300W and 450W. On the commercial side, panels can go beyond 500W. The best solar panel for your needs depends ...

[How Much Energy Does A Solar Panel Produce?](#)

Most residential panels in 2025 are rated 250-550 watts, with 400-watt models becoming the new standard. A 400-watt panel can ...



[Solar Panel Wattage Explained: How Many Watts ...](#)

Confused about solar panel wattage? Learn how many watts you need, how solar output works, and how to calculate the right solar ...



[Understanding Solar Panel Wattage Ratings](#)

For residential installations, panels usually range between 300W and 450W. On the commercial side, panels can go beyond 500W. ...



Solar Panel Wattage Calculator

This solar panel wattage calculator allows you to calculate the recommended solar panel wattage according to the energy consumption of your household appliances. If you want to know more ...

[How Many Watts Per Solar Panel: What You Need to Know](#)

Solar panels come in various sizes and efficiencies, typically ranging from 250 to 400 watts per panel. This variation can depend on several factors, including the type of solar ...



[How many watts can a 80w solar panel directly drive?](#)

A typical 80W solar panel can directly drive appliances that require a total of 80 watts or less, with considerations for efficiency and ...



Contact Us

For inquiries, pricing, or partnerships:

<https://www.sccd-sk.eu>

Phone: +32 2 808 71 94

Email: info@sccd-sk.eu

Scan QR code for WhatsApp.

