



How many watts does Beiya solar street light have





Overview

Solar LED street lights typically operate within a range of 15 to 150 watts depending on several factors, such as their intended purpose, light distribution requirements, and geographical location. 1, The wattage varies based on the brightness levels needed for specific areas, such as.

Solar LED street lights typically operate within a range of 15 to 150 watts depending on several factors, such as their intended purpose, light distribution requirements, and geographical location. 1, The wattage varies based on the brightness levels needed for specific areas, such as.

Solar street lights typically range between 30 to 200 watts, with variability based on the design and intended purpose, 2. wattage affects brightness and efficiency, 3. solar panels and batteries influence overall performance, 4. specific requirements depend on environmental conditions and local.

A solar street light typically consumes between 10 to 80 watts, depending on its use case. For quiet residential paths, 10 to 20 watts might be enough. But when it comes to highways or industrial zones, you're likely looking at 60 watts or more. The beauty is, unlike traditional street lights.

To choose the best solar street light, consider lumens per watt efficiency, battery capacity, solar panel quality, and installation environment. High-lumen LED chips, monocrystalline solar panels, MPPT charge controllers, and durable materials ensure long-lasting performance. Match brightness.

The wattage of a solar street light depends on several factors, including the type of LED, the size of the solar panel, and the capacity of the battery. Several factors influence the wattage of a solar street light, making it essential to understand these variables when selecting a system for your.

The ideal solar streetlight power depends on location, lighting goals, and overall budget. It is best to balance needed brightness with feasible panel and battery capacity. I want to show how I decide on suitable wattage for different projects. I will explain common installation heights, brightness.

Solar street lights typically range between 15 to 150 watts, depending on several



factors, such as brightness requirements and environmental conditions. 2. The average wattage of commonly used solar street lights can be around 30 to 60 watts, which is suitable for suburban areas. 3. High-efficiency.



How many watts does Beiya solar street light have

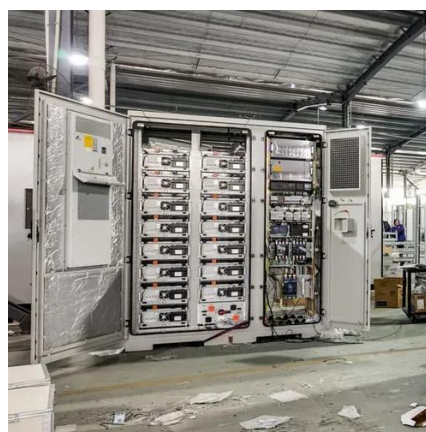


[How many watts does solar street light have , NenPower](#)

Entry-Level Models: Solar street lights commonly feature wattages starting as low as 15 watts, primarily found in less populated areas where minimal lighting suffices. These ...

How many watts does each solar street light have? , NenPower

For optimal performance, solar panels ranging from 100 to 300 watts are often recommended for street lighting applications. In addition to capturing sunlight effectively, a ...



[How many watts does a solar street light use?](#)

In the case of solar street lights, wattage refers to the amount of power the light fixture consumes to produce illumination. The wattage of a solar street light depends on ...

How Much Power Does a Solar Street Light Use? (Watts, Energy, ...)

For quiet residential paths, 10 to 20 watts might be enough. But when it comes to highways or industrial zones, you're likely looking at 60 watts

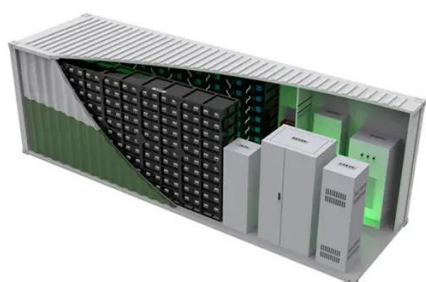


or more. The beauty is, unlike ...



How many watts does each solar street light have?

For optimal performance, solar panels ranging from 100 to 300 watts are often recommended for street lighting applications. In addition to ...



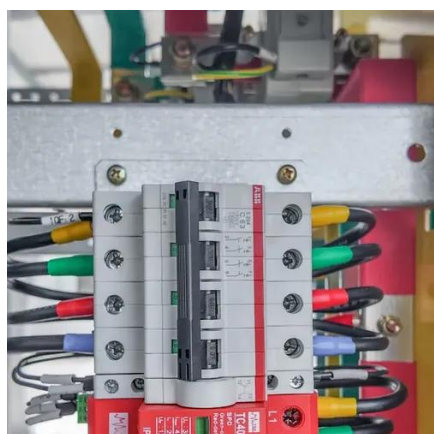
How many watts does a solar led street light ...

How many watts does a solar LED street light usually have? Solar LED street lights typically operate within a range of 15 to 150 watts ...



How many watts does a solar street light panel have

A solar street light panel typically has a wattage ranging from 10 to 400 watts, depending on several factors, including its design, ...





[How to Choose Solar LED Street Light: The](#)

...

Standard LED street lights typically offer 100-120 lm/W, but opt for models with at least 130-200 lm/W for superior performance. ...



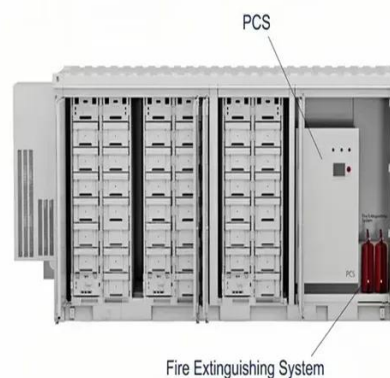
[How many watts does a solar street light](#)

...

The typical wattage of solar street lights often falls between 15 and 150 watts. Smaller installations designed for pedestrian pathways ...

[How to Choose Solar LED Street Light: The Ultimate Guide](#)

Standard LED street lights typically offer 100-120 lm/W, but opt for models with at least 130-200 lm/W for superior performance. Higher lm/W values translate to better energy ...



[How many watts can a solar street light have? , NenPower](#)

A typical range of wattage for solar street lights falls between 15 watts and 100 watts, although it can extend beyond that for specialized applications. Choosing the ...





[How to Select the Best Wattage for Solar Street Lights?](#)

The ideal solar streetlight power depends on location, lighting goals, and overall budget. It is best to balance needed brightness with feasible panel and battery capacity. I want to show how I ...



How many watts does a solar street light calculate? , NenPower

The typical wattage of solar street lights often falls between 15 and 150 watts. Smaller installations designed for pedestrian pathways frequently utilize approximately 15 to ...

[How many watts does a solar street light panel have](#)

A solar street light panel typically has a wattage ranging from 10 to 400 watts, depending on several factors, including its design, intended application, and required ...



[How many watts does a solar led street light usually have?](#)

How many watts does a solar LED street light usually have? Solar LED street lights typically operate within a range of 15 to 150 watts depending on several fact...



Contact Us

For inquiries, pricing, or partnerships:

<https://www.sccd-sk.eu>

Phone: +32 2 808 71 94

Email: info@sccd-sk.eu

Scan QR code for WhatsApp.

