



How many watts does a 220 watt solar panel have





Overview

When we refer to the “ speed ” of a 220W solar panel, we’re actually discussing its power output capacity— 220 watts.

When we refer to the “ speed ” of a 220W solar panel, we’re actually discussing its power output capacity— 220 watts.

Calculating the solar panel wattage you need for your household is very easy. It starts off with the following equation: Where: electricity consumption (kWh/yr) - Total average amount of electricity you use annually. Found on your utility bill, and solar hours per day - Average hours of direct.

How many watts is a 400W solar panel?

The number in the panel’s name is its rated wattage. A 400W solar panel can produce up to 400 watts in full sun. But remember, that’s under test conditions. In real life, output can be a bit lower. Think of it like a car’s fuel rating it shows potential, not.

While solar panel systems start at 1 KW and produce between 750 and 850 Kilowatt hour (KWH) annually, larger homes and bigger households typically want to be on the higher end. A four-to-five-person household likely needs a four to five KW system. The roof size and condition, hours of peak sunlight.

ECOFLOW's 220W Bifacial Portable Solar Panel is 2-in-1. With a 220-Watt primary side and a 155-Watt side on the back for ambient light, you can capture up to 25% more solar energy and charge your portable power station even faster. Try a mirrored surface and you can get up to 80% more energy.

A 100-watt panel can produce 100 watts per hour in direct sunlight. A 400-watt panel can generate 400 watts per hour under the same conditions. This doesn’t mean they’ll produce that amount all day, output varies with weather, shade, and panel orientation. Renogy 200W Portable Solar Panel, IP65.

When we refer to the “ speed ” of a 220W solar panel, we’re actually discussing its power output capacity— 220 watts. This figure represents the panel’s ability to convert sunlight into electrical energy under standard test conditions (STC), which



typically includes a solar irradiance of 1000 watts.



How many watts does a 220 watt solar panel have

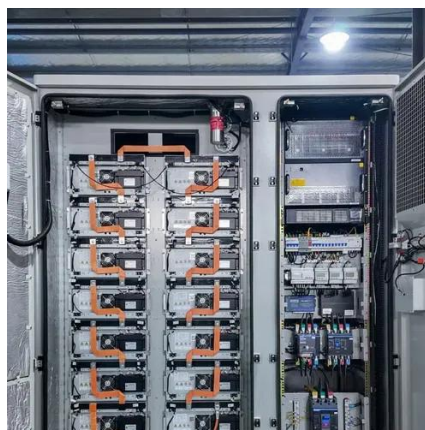


[How Much Power Does A Solar Panel Produce?](#)

These days, the latest and best solar panels for residential properties produce between 250 and 400 Watts of electricity. While solar panel systems start at 1 KW and produce between 750 and

[Solar Panel Wattage & Output Explained](#)

Learn how solar panel wattage, efficiency, and real-world output work so you can size systems accurately and choose the right equipment.



[How Much Energy Does A Solar Panel Produce?](#)

About 97% of home solar panels included in EnergySage quotes today have power output ratings between 400 and 460 watts. The ...



[How Many Watts Of Solar Panels Are Needed To Charge A ...](#)

To charge a 220 Ah battery in 6 hours, you need a solar panel with an output of at least 550 watts. Under optimal conditions, one 550 W solar panel is



sufficient, as you cannot ...



[Solar Panel Wattage & Output Explained](#)

Learn how solar panel wattage, efficiency, and real-world output work so you can size systems accurately and choose the right ...

[How Much Power Does A Solar Panel Produce?](#)

We suggest using 400W solar panels or solar ...



Solar Panel Wattage Calculator

How do you calculate solar panel wattage needed? The math is simple. First, you find your daily energy use in watt-hours. Then, you divide it by the ...



How Fast is a 220W Solar Panel? Efficiency & Output Explained

When we refer to the " speed " of a 220W solar panel, we're actually discussing its power output capacity-- ...

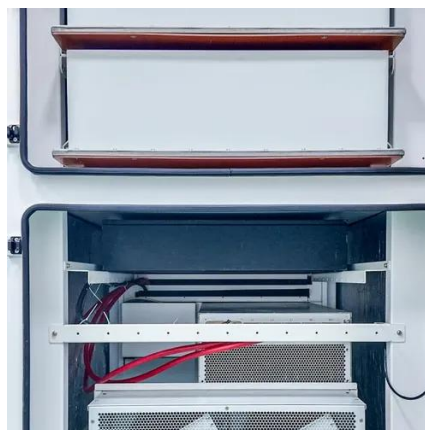


220 Watt Solar panels for sale , Prices, dimensions, weight, ...

The TPL P-54 Series, ranging from 210W to 235W, is a line of [] The SKT195-220M6-24 solar panel by Sunket Solar is a high-quality, [] The SKT215-240P-24 module by Sunket Solar is a ...

How Fast is a 220W Solar Panel? Efficiency & Output Explained

When we refer to the " speed " of a 220W solar panel, we're actually discussing its power output capacity-- 220 watts.



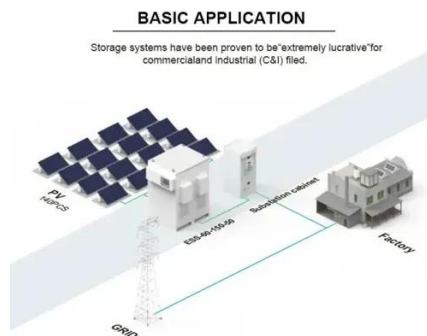
220-Watt Monocrystalline Silicon Solar Panel with 21.8-Volt ...

We suggest using 400W solar panels or solar panels with higher wattage. Yes, you can use our 400W portable solar panel to charge your Tesla, as long as your Tesla charging setup ...



Solar Panel Wattage Calculator

This solar panel wattage calculator allows you to calculate the recommended solar panel wattage according to the energy consumption of your household appliances.



[Solar Panel Wattage Explained: How Many Watts ...](#)

This guide will explain solar panel wattage clearly, with real-life examples and simple calculations anyone can follow. Whether you're a ...



[Solar Panel Wattage Explained: How Many Watts Do You Need?](#)

This guide will explain solar panel wattage clearly, with real-life examples and simple calculations anyone can follow. Whether you're a homeowner exploring solar energy or a ...



[How Much Energy Does A Solar Panel Produce? , EnergySage](#)

About 97% of home solar panels included in EnergySage quotes today have power output ratings between 400 and 460 watts. The most frequently quoted panels are around 450 ...





Solar Panel Wattage Calculator

How do you calculate solar panel wattage needed? The math is simple. First, you find your daily energy use in watt-hours. Then, you divide it by the number of peak sun hours in your area. ...





Contact Us

For inquiries, pricing, or partnerships:

<https://www.sccd-sk.eu>

Phone: +32 2 808 71 94

Email: info@sccd-sk.eu

Scan QR code for WhatsApp.

