



How many watts does a large solar panel have





Overview

The average wattage of a large solar panel generally falls within the range of 300 to 450 watts. The variability in wattage depends on the model and manufacturer. Certain advanced panels may exceed this range, boasting output ratings of up to 600 watts or more.

The average wattage of a large solar panel generally falls within the range of 300 to 450 watts. The variability in wattage depends on the model and manufacturer. Certain advanced panels may exceed this range, boasting output ratings of up to 600 watts or more.

A large solar panel typically has a wattage rating that varies depending on its design and manufacturing specifications. 1. Common wattage ratings for large solar panels range from 300 to 450 watts, which are standard in many residential and commercial installations. 2. The efficiency of solar.

The power output of a solar panel is directly linked to its physical size and the efficiency of the cells inside, with the rating measured in watts (W). A larger panel, such as a 72-cell module, generally produces more power than a smaller 60-cell module, assuming a similar level of cell.

Is 400 watts good?

420 watts?

Should you opt for the 450-watt panel?

Is it worth the extra cost?

About 97% of home solar panels installed in 2025 produce between 400 and 460 watts, based on thousands of quotes from the EnergySage Marketplace. But wattage alone doesn't tell the whole story. In fact.

Solar panels degrade slowly, losing about 0.5% output per year, and often last 25–30 years or more. Most residential panels in 2025 are rated 250–550 watts, with 400-watt models becoming the new standard. A 400-watt panel can generate roughly 1.6–2.5 kWh of energy per day, depending on local.



While solar panel systems start at 1 KW and produce between 750 and 850 Kilowatt hour (KwH) annually, larger homes and bigger households typically want to be on the higher end. A four-to-five-person household likely needs a four to five KW system. The roof size and condition, hours of peak sunlight.

For example, a 6.6 kW solar system typically consists of 20 panels each delivering 330W of power. Solar Panel Wattage Divide the average daily wattage usage by the average sunlight hours to measure solar panel wattage. Moreover, panel output efficiency directly impacts watts and the system's. How much power does a solar panel produce?

The power rating of solar panels is in "Watts" or "Wattage," which is the unit used to measure power production. These days, the latest and best solar panels for residential properties produce between 250 and 400 Watts of electricity.

How many watts can a 400 watt solar panel produce?

A 100-watt panel can produce 100 watts per hour in direct sunlight. A 400-watt panel can generate 400 watts per hour under the same conditions. This doesn't mean they'll produce that amount all day, output varies with weather, shade, and panel orientation. Solar Power Meter Digital Solar Energy Meter Radiation Measuremen.

What is solar panel wattage?

Let's demystify it. What Does Solar Panel Wattage Mean?

Wattage refers to the amount of electrical power a solar panel can produce under standard test conditions (STC), which simulate a bright sunny day with optimal solar irradiance (1,000 W/m²), a cell temperature of 25°C, and clean panels.

How large are solar panels?

But even today there is no definite answer for how large solar panels are, because the answer varies. The same goes for their wattages because not each system works on the same power. We know you have lots of queries regarding solar panel sizes and wattage, so let us discover their answers.



How many watts does a large solar panel have



How Much Power Does A Solar Panel Produce?

These days, the latest and best solar panels for residential properties produce between 250 and 400 Watts of electricity. While solar panel systems start at 1 KW and produce between 750 ...

How many watts does a large solar panel have

Solar panels are typically categorized as small, medium, or large, with large panels generally offering higher wattage outputs. Large ...



What Size Are Solar Panels and How Much Power Do They ...

For instance, standard 60-cell residential panels often have power ratings between 350 and 400 watts, while the larger 72-cell commercial panels can exceed 400 watts, ...

How Much Power Does A Solar Panel Produce?

But even today there is no definite answer for how large solar panels are, because the answer varies. The same goes for their wattages ...



[Solar Panel Wattage Explained: How Many Watts Do You Need?](#)

This guide will explain solar panel wattage clearly, with real-life examples and simple calculations anyone can follow. Whether you're a homeowner exploring solar energy or a ...

[Solar Panel Wattage & Output Explained](#)

Most residential solar panels in 2025 are rated between 350W and 480W, while commercial modules can exceed 600W. How do ...



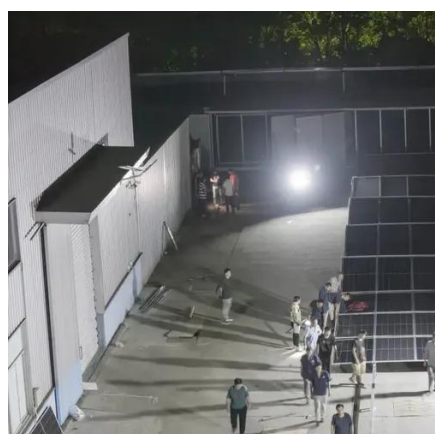
[Solar Panel Sizes and Wattage Explained](#)

But even today there is no definite answer for how large solar panels are, because the answer varies. The same goes for their wattages because not each system works on the ...



How Much Energy Does A Solar Panel Produce?

Most residential panels in 2025 are rated 250-550 watts, with 400-watt models becoming the new standard. A 400-watt panel can generate roughly 1.6-2.5 kWh of energy ...



Solar Panel Wattage & Output Explained

Most residential solar panels in 2025 are rated between 350W and 480W, while commercial modules can exceed 600W. How do manufacturers determine wattage? They test ...

Solar Panel Wattage Explained: How Many Watts ...

This guide will explain solar panel wattage clearly, with real-life examples and simple calculations anyone can follow. Whether you're a ...



How Much Energy Does A Solar Panel Produce?

Most residential panels in 2025 are rated 250-550 watts, with 400-watt models becoming the new standard. A 400-watt panel can ...



How Much Energy Does A Solar Panel Produce?

About 97% of solar panels quoted on the EnergySage ...



Solar Panel Size and Wattage Guide: What Works ...

High-quality residential solar installations in the US typically utilize solar panels rated between 250W and 430W. As solar panels get ...



How Many Watts Per Solar Panel: What You Need to Know

Solar panels come in various sizes and efficiencies, typically ranging from 250 to 400 watts per panel. This variation can depend on several factors, including the type of solar ...



Solar Panel Size and Wattage Guide: What Works Best for ...

High-quality residential solar installations in the US typically utilize solar panels rated between 250W and 430W. As solar panels get more efficient and produce more ...





[How many watts does a large solar panel have , NenPower](#)

Solar panels are typically categorized as small, medium, or large, with large panels generally offering higher wattage outputs. Large solar panels, often employed in both ...



[How Much Energy Does A Solar Panel Produce? , EnergySage](#)

About 97% of solar panels quoted on the EnergySage Marketplace in 2025 are 400 to 460 watts--expect to see panel outputs in this range in your quotes. Your panels' ...



Contact Us

For inquiries, pricing, or partnerships:

<https://www.sccd-sk.eu>

Phone: +32 2 808 71 94

Email: info@sccd-sk.eu

Scan QR code for WhatsApp.

