



# How many watts does a small solar street light have





## Overview

---

Solar street lights typically range between 30 to 200 watts, with variability based on the design and intended purpose, 2. wattage affects brightness and efficiency, 3. solar panels and batteries influence overall performance, 4. specific requirements depend on environmental.

Solar street lights typically range between 30 to 200 watts, with variability based on the design and intended purpose, 2. wattage affects brightness and efficiency, 3. solar panels and batteries influence overall performance, 4. specific requirements depend on environmental.

Solar street lights typically range between 30 to 200 watts, with variability based on the design and intended purpose, 2. wattage affects brightness and efficiency, 3. solar panels and batteries influence overall performance, 4. specific requirements depend on environmental conditions and local.

A solar street light typically consumes between 10 to 80 watts, depending on its use case. For quiet residential paths, 10 to 20 watts might be enough. But when it comes to highways or industrial zones, you're likely looking at 60 watts or more. The beauty is, unlike traditional street lights.

The wattage of a solar street light depends on several factors, including the type of LED, the size of the solar panel, and the capacity of the battery. Several factors influence the wattage of a solar street light, making it essential to understand these variables when selecting a system for your.

To choose the best solar street light, consider lumens per watt efficiency, battery capacity, solar panel quality, and installation environment. High-lumen LED chips, monocrystalline solar panels, MPPT charge controllers, and durable materials ensure long-lasting performance. Match brightness.

The ideal solar streetlight power depends on location, lighting goals, and overall budget. It is best to balance needed brightness with feasible panel and battery capacity. I want to show how I decide on suitable wattage for different projects. I will explain common installation heights, brightness.

The power range of an integrated solar street light is usually between 5W and



120W. Specifically, the power of solar street lights of different models and specifications varies: 5W to 120W: This is the common power range of solar street lights, suitable for different lighting needs and.



## How many watts does a small solar street light have

---

### [How to Choose Solar LED Street Light: The ...](#)



Standard LED street lights typically offer 100-120 lm/W, but opt for models with at least 130-200 lm/W for superior performance. ...

### [How much power does a solar street light consume?](#)

These solar street lights are designed for residential areas, pathways, or small parks, and typically have a power consumption rate between 5 watts to 20 watts.



### **How many watts does each solar street light have? , NenPower**

For optimal performance, solar panels ranging from 100 to 300 watts are often recommended for street lighting applications.

### [How many watts does each solar street light have?](#)

For optimal performance, solar panels ranging from 100 to 300 watts are often recommended for street lighting applications.



### How many watts does a solar street light use?

For instance, smaller residential solar street lights may use as little as 10 to 30 watts, while larger commercial or industrial lights can use 60 to 120 watts or more.



### How many watts are solar street lights generally

?Small solar street lights?: Usually around 10 watts, suitable for small area lighting or decorative lighting. ?Village solar street lights?: The power ranges from 10 watts to 100 watts, depending on ...



### Good Solar Light Wattage: Best Power for Outdoor ...

For example, a busy city street needs much brighter lights (like 100 to 200 watts) than a neighborhood or a small village road (which ...





## How many watts does an integrated solar street light have?

?The power range of an integrated solar street light is usually between 5W and 120W. Specifically, the power of solar street lights of different models and specifications varies:

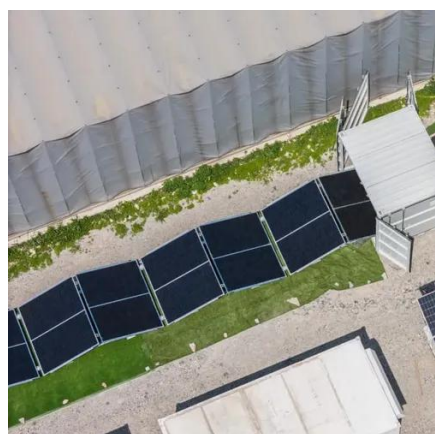


## **Lighting , NYC Street Design Manual**

Street lights and components are categorized as Standard or Distinctive. DOT maintains equipment in each of these categories, and maintain damaged street lights. The current ...

## Good Solar Light Wattage: Best Power for Outdoor Lighting

For example, a busy city street needs much brighter lights (like 100 to 200 watts) than a neighborhood or a small village road (which might only need 20 to 50 watts).



## **How Much Power Does a Solar Street Light Use? (Watts, Energy, ...**

Quick Answer First A solar street light typically consumes between 10 to 80 watts, depending on its use case. For quiet residential paths, 10 to 20 watts might be enough. But ...



## [How to Select the Best Wattage for Solar Street Lights?](#)

The ideal solar streetlight power depends on location, lighting goals, and overall budget. It is best to balance needed brightness with feasible panel and battery capacity. I want to show how I ...



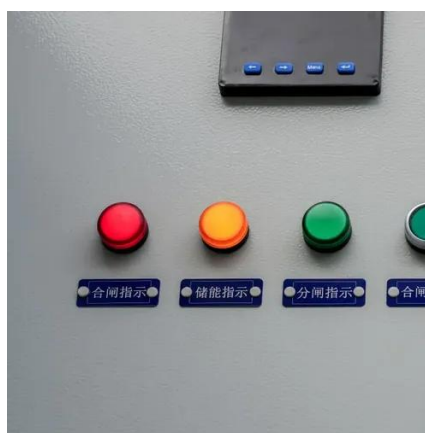
## [How much power does a solar street light](#)

...

These solar street lights are designed for residential areas, pathways, or small parks, and typically have a power consumption rate ...

## [How to Choose Solar LED Street Light: The Ultimate Guide](#)

Standard LED street lights typically offer 100-120 lm/W, but opt for models with at least 130-200 lm/W for superior performance. Higher lm/W values translate to better energy ...





## Contact Us

---

For inquiries, pricing, or partnerships:

<https://www.sccd-sk.eu>

Phone: +32 2 808 71 94

Email: [info@sccd-sk.eu](mailto:info@sccd-sk.eu)

Scan QR code for WhatsApp.

