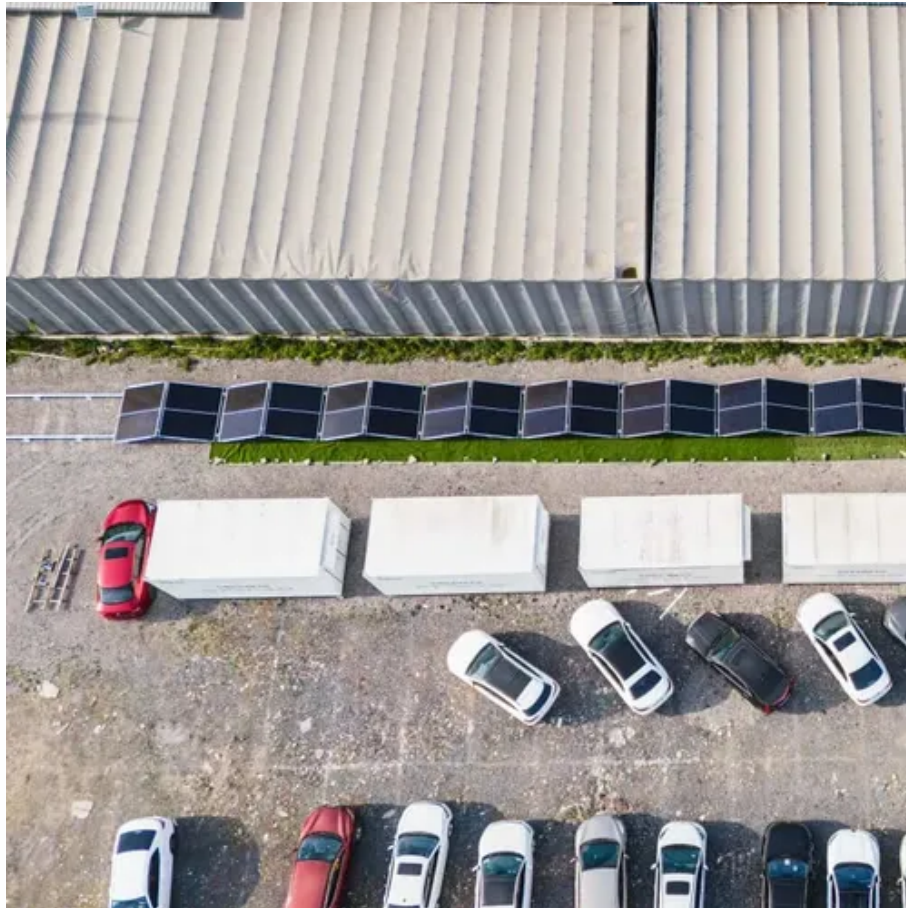




# How many watts does a solar panel normally have





## Overview

---

How much power does a solar panel produce?

The power rating of solar panels is in “Watts” or “Wattage,” which is the unit used to measure power production. These days, the latest and best solar panels for residential properties produce between 250 and 400 Watts of electricity.

What is solar panel wattage?

Let’s demystify it. What Does Solar Panel Wattage Mean?

Wattage refers to the amount of electrical power a solar panel can produce under standard test conditions (STC), which simulate a bright sunny day with optimal solar irradiance (1,000 W/m<sup>2</sup>), a cell temperature of 25°C, and clean panels.

How many Watts Does a solar panel produce in 2025?

About 97% of home solar panels installed in 2025 produce between 400 and 460 watts, based on thousands of quotes from the EnergySage Marketplace. But wattage alone doesn't tell the whole story. In fact, efficiency matters more than wattage when comparing solar panels—a higher wattage can simply mean that a panel is larger.

How many watts can a 400 watt solar panel produce?

A 100-watt panel can produce 100 watts per hour in direct sunlight. A 400-watt panel can generate 400 watts per hour under the same conditions. This doesn’t mean they’ll produce that amount all day, output varies with weather, shade, and panel orientation. Solar Power Meter Digital Solar Energy Meter Radiation Measuremen.



## How many watts does a solar panel normally have

---



### [How Much Watts Does a Solar Panel Produce: Myths & Facts](#)

How many watts does a typical solar panel produce? A typical residential solar panel produces between 250 to 400 watts under optimal conditions, depending on the type ...

### [How Much Energy Does A Solar Panel Produce?](#)

Most residential panels in 2025 are rated 250-550 watts, with 400-watt models becoming the new standard. A 400-watt panel can generate roughly 1.6-2.5 kWh of energy ...



### [Solar Panel Wattage & Output Explained](#)

Most residential solar panels in 2025 are rated between 350W and 480W, while commercial modules can exceed 600W. How do manufacturers determine wattage? They test ...

### [Solar Panel Wattage & Output Explained](#)

Most residential solar panels in 2025 are rated between 350W and 480W, while commercial modules can exceed 600W. How do ...



### Solar Panel Wattage Explained: How Many Watts Do You Need?

On average, a solar panel produces around 150 to 200 watts per square meter. This can vary due to:  
Example: A 1.7 m<sup>2</sup> panel with 20% efficiency will produce about 340W in full ...

### What Size Are Solar Panels and How Much Power Do They ...

For instance, standard 60-cell residential panels often have power ratings between 350 and 400 watts, while the larger 72-cell commercial panels can exceed 400 watts, ...



### How Much Power Does a Solar Panel Produce?

Residential solar panels typically produce between 250 and 400 watts per hour--enough to power a microwave oven for 10-15 minutes. As of 2020, the average U.S. ...



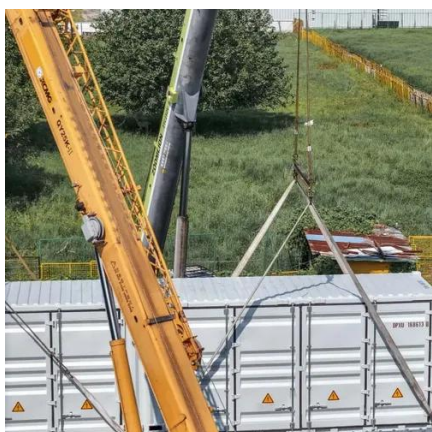
## How Much Power Does a Solar Panel Produce?

Residential solar panels typically produce between 250 and 400 watts per hour--enough to power a microwave oven for 10-15 ...



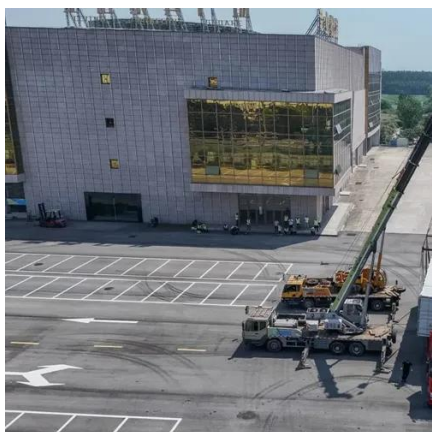
## How Much Power Does A Solar Panel Produce?

These days, the latest and best solar panels for residential properties produce between 250 and 400 Watts of electricity. While solar panel systems start at 1 KW and produce between 750 ...



## How Much Energy Does A Solar Panel Produce?

About 97% of home solar panels installed in 2025 produce ...



## How Much Energy Does A Solar Panel Produce? , EnergySage

About 97% of home solar panels installed in 2025 produce between 400 and 460 watts, based on thousands of quotes from the EnergySage Marketplace. But wattage alone ...



## How Much Energy Does A Solar Panel Produce?

Most residential panels in 2025 are rated 250-550 watts, with 400-watt models becoming the new standard. A 400-watt panel can ...



## How many watts are solar panels usually. NenPower

Solar panels typically range in wattage from 100 to 400 watts, with most residential panels averaging around 250 to 350 watts. The specific wattage of a solar panel depends on ...



## How Many Watts Per Solar Panel: What You Need to Know

When it comes to solar panels, wattage is a critical factor that determines how much electricity a panel can produce under optimal conditions. The wattage of a solar panel is ...



## How Much Power Does A Solar Panel Produce?

On average, a solar panel produces around 150 to 200 watts per square meter. This can vary due to:  
Example: A 1.7 m<sup>2</sup> panel with 20% ...



- |                             |                             |
|-----------------------------|-----------------------------|
| 1 PCS Module                | 6 OPV2 side circuit breaker |
| 2 Battery room              | 7 High Volt Box             |
| 3 Grid side circuit breaker | 8 BAT side circuit breaker  |
| 4 Load side circuit breaker | 9 LCD display screen        |
| 5 OPV1 side circuit breaker | 10 MPPT                     |



## Contact Us

---

For inquiries, pricing, or partnerships:

<https://www.sccd-sk.eu>

Phone: +32 2 808 71 94

Email: [info@sccd-sk.eu](mailto:info@sccd-sk.eu)

Scan QR code for WhatsApp.

