



# How many watts does an outdoor solar light use





## Overview

---

An individual light uses 5W to 10W and a backyard system will use 6 to 10 of these lights. The exact number depends on the size of your system and model of your landscape lights. For example, a set of six 5W lights uses 30W while a set of ten bright 10W lights uses 100W.

An individual light uses 5W to 10W and a backyard system will use 6 to 10 of these lights. The exact number depends on the size of your system and model of your landscape lights. For example, a set of six 5W lights uses 30W while a set of ten bright 10W lights uses 100W.

Outdoor solar lights typically utilize between 0.5 and 15 watts, depending on the design and intended purpose. 1. Wattage varies based on factors like brightness and features, 2. most standard outdoor solar lights are around 5-10 watts, 3. and higher-end models can reach up to 15 watts or more. 4.

A good solar light, like a solar street light, typically consists of a photovoltaic panel, battery, controller, LED lamp, and a supporting pole. Structurally, they can be categorized into two types: integrated and split systems. Good solar light designs can be categorized into two types: Integrated.

The average landscape lighting system uses between 20 and 100 watts. This is the overall power consumption for most domestic systems. An individual light uses 5W to 10W and a backyard system will use 6 to 10 of these lights. The exact number depends on the size of your system and model of your.

Modern outdoor lighting options range from energy-efficient LEDs to traditional incandescent bulbs, each with different wattage considerations that directly impact performance and longevity. Understanding wattage requirements will help you make informed decisions that enhance your outdoor spaces.

Different types of outdoor lights serve various purposes, and their wattage requirements vary accordingly. Here's a breakdown of common outdoor lighting types and their typical wattage ranges: 1. Pathway Lights Pathway lights are designed to provide soft, ambient lighting along walkways, driveways.

The best wattage for outdoor lights is 40 watts and lower. Up to 40 watts is ideal



for lighting pathways, garden beds, and other landscape areas. 40 to 80 watts are great for brightening areas like driveways, smaller yards, and the inside of your home. It may be best to use them sparingly if you.



## How many watts does an outdoor solar light use

---



### [This Is The Best Wattage For Outdoor Lights Around Homes](#)

Up to 40 watts is ideal for lighting pathways, garden beds, and other landscape areas. 40 to 80 watts are great for brightening areas like driveways, smaller yards, and the ...

### [Solar Lighting Efficiency: Understanding Wattage and Lumens](#)

Solar lights with 15-30 watts and 1000-3000 lumens provide enough light to cover larger areas while ...



### [Complete Guide to Choosing the Best Wattage for ...](#)

Our light bulb wattage guide will cover choosing the best wattage for your outdoor lights. Brightness is part of the equation: ...

## **Complete Guide to Choosing the Best Wattage for Outdoor Lights**

Our light bulb wattage guide will cover choosing the best wattage for your outdoor lights. Brightness is part of the equation: selecting the



right light bulb wattage also means ...

### ESS



### How many watts do outdoor solar lights use? , NenPower

Compact solar lights, typically used for pathway lighting or accenting landscaping, usually remain within the 1 to 10 watts range but crammed with significant advancements to ...



### How many watts does an outdoor solar light use , NenPower

Outdoor solar lights typically utilize between 0.5 and 15 watts, depending on the design and intended purpose. 1. Wattage varies based on factors like brightnes...



### How Many Watts Does Landscape Lighting Use? (Power ...

It's easy to add lots of these lights around your yard, but how much electricity is it going to use? Below we will discuss and test landscape lighting wattage, explain how to work it out for ...





## Optimal Wattage For Outdoor Lights: A Complete Guide

To find the right wattage for your outdoor lights, start by measuring your space. Grab a tape measure and figure out the area you want to light up. Keep in mind that different ...



## **9 Tricks for Choosing the Right Wattage for Outdoor Lights That ...**

Discover how to select the perfect wattage for outdoor lighting to maximize security, enhance aesthetics, and save energy. Learn specific recommendations for different areas and bulb types.



## What Wattage to Use for Outdoor Lights:

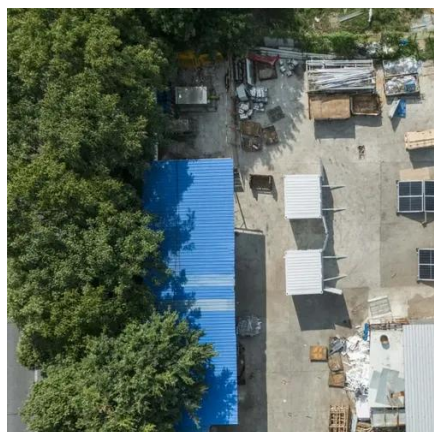
...

Find ideal wattage for outdoor lighting--compare LED vs incandescent, lumens vs watts & lighting type. Dive in now to save energy ...



## This Is The Best Wattage For Outdoor Lights ...

Up to 40 watts is ideal for lighting pathways, garden beds, and other landscape areas. 40 to 80 watts are great for brightening areas ...





## How many watts do outdoor solar lights use?

Compact solar lights, typically used for pathway lighting or accenting landscaping, usually remain within the 1 to 10 watts range but ...



## How Many Watts Does Landscape Lighting Use?

It's easy to add lots of these lights around your yard, but how much electricity is it going to use? Below we will discuss and test landscape lighting ...



## Good Solar Light Wattage: Best Power for Outdoor Lighting

Wondering what wattage makes a good solar light? Discover the ideal power range for bright, efficient lighting in any outdoor space.



## Solar Lighting Efficiency: Understanding Wattage and Lumens

Solar lights with 15-30 watts and 1000-3000 lumens provide enough light to cover larger areas while ensuring security and visibility. For Streets and Roadways: Street lighting ...





## What Wattage to Use for Outdoor Lights: Brightness & Power Guide

Find ideal wattage for outdoor lighting--compare LED vs incandescent, lumens vs watts & lighting type. Dive in now to save energy and improve your outdoor ambiance.





## Contact Us

---

For inquiries, pricing, or partnerships:

<https://www.sccd-sk.eu>

Phone: +32 2 808 71 94

Email: [info@sccd-sk.eu](mailto:info@sccd-sk.eu)

Scan QR code for WhatsApp.

