



How many watts does the wall-mounted solar panel have





Overview

In summation, wall-mounted solar panels can generally produce between 50 to 300 watts, but several critical factors contribute to this variability including panel type, environmental conditions, and system maintenance.

In summation, wall-mounted solar panels can generally produce between 50 to 300 watts, but several critical factors contribute to this variability including panel type, environmental conditions, and system maintenance.

To determine the wattage of a wall-mounted solar panel, several factors play a significant role, including the panel's size, type, and the amount of sunlight it receives. Generally, 1. typical wattages range from 50 to 300 watts per panel, 2. efficiency is influenced by the technology used.

Solar panel wattage is the maximum amount of power a solar panel can produce under ideal conditions. It's measured in watts (W) and represents the panel's peak power output. For example, a 400-watt solar panel can generate up to 400 watts of electricity when exposed to full sunlight in a controlled.

When it comes to solar systems, homeowners will find a variety of solar panel sizes and wattage that cater to different needs and roofing configurations. Typically, these units range from 60 to 72 cells. For example, a standard 60-cell module measures about 65 inches by 39 inches, while a larger.

Solar panels come in various sizes and efficiencies, typically ranging from 250 to 400 watts per panel. This variation can depend on several factors, including the type of solar technology used, the manufacturer, and even the geographical location where the panels are installed. For instance, a.

A 100-watt panel can produce 100 watts per hour in direct sunlight. A 400-watt panel can generate 400 watts per hour under the same conditions. This doesn't mean they'll produce that amount all day, output varies with weather, shade, and panel orientation. Renogy 200W Portable Solar Panel, IP65.

How much power does a 400 W solar panel produce?

A 400 W solar panel can produce around 1.2-3 kWh or 1,200-3,000 Wh of direct



current (DC). The power produced by solar panels can vary depending on the size and number of your panels, their efficiency, and the climate in your area. How many solar. How much wattage should a solar panel have?

When considering solar panel sizes and wattage, you'll typically find options ranging from 250 to 400 watts. Opting for higher wattage units can be a game-changer, especially for those with limited roof space.

How many Watts Does a solar panel produce in 2025?

About 97% of home solar panels installed in 2025 produce between 400 and 460 watts, based on thousands of quotes from the EnergySage Marketplace. But wattage alone doesn't tell the whole story. In fact, efficiency matters more than wattage when comparing solar panels—a higher wattage can simply mean that a panel is larger.

How many Watts Does a solar panel produce?

Solar panels are rated in watts based on how much power they can produce under Standard Test Conditions (STC): 1,000 W/m² of sunlight, 25°C (77°F) temperature, and optimal angle. This wattage rating represents the panel's peak output in a lab setting, not in real-world conditions. Do higher watt solar panels produce more electricity?

.

What is a solar panel wattage calculator?

This solar panel wattage calculator allows you to calculate the recommended solar panel wattage according to the energy consumption of your household appliances. If you want to know more about solar panel sizes and wattage calculations, feel free to explore our fun and helpful solar panel calculator.*



How many watts does the wall-mounted solar panel have



[How Much Energy Does A Solar Panel Produce?](#)

About 97% of home solar panels installed in 2025 produce ...

Understanding Solar Panel Sizes and Wattage: A Complete Tutorial

When considering solar panel sizes and wattage, you'll typically find options ranging from 250 to 400 watts. Opting for higher wattage units can be a game-changer, ...



[How many watts are wall mounted solar panels? , NenPower](#)

The average output of a wall-mounted solar panel typically falls between 250 to 400 watts per panel, depending on multiple factors including technology type, efficiency, and ...



[How Much Energy Does A Solar Panel Produce? , EnergySage](#)

About 97% of home solar panels installed in 2025 produce between 400 and 460 watts, based on thousands of quotes from the EnergySage



Marketplace. But wattage alone ...



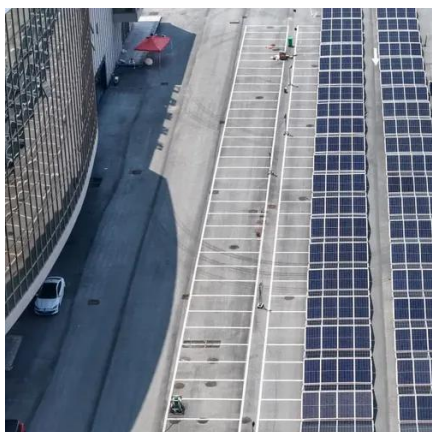
[How many watts does a wall mounted solar panel have?](#)

In summation, wall-mounted solar panels can generally produce between 50 to 300 watts, but several critical factors contribute to this variability including panel type, ...



[Solar Panel Wattage Explained: How Many Watts ...](#)

This guide will explain solar panel wattage clearly, with real-life examples and simple calculations anyone can follow. Whether you're a ...



Solar Panel Wattage Calculator

This solar panel wattage calculator allows you to calculate the recommended solar panel wattage according to the energy consumption of your household appliances.



[Solar Panel Sizes and Wattage Explained](#)

Over 179 (GW) of solar capacity is installed nationwide and it's capable of powering roughly 33 million homes. While it takes roughly 17 (400-watt) panels to power a home.



Solar Panel Wattage Calculator

This solar panel wattage calculator allows you to calculate the recommended solar panel wattage according to the energy consumption of your ...

[How Many Watts in 1 Solar Panel: Myths and Facts Explained](#)

Typically, most residential solar panels available in the U.S. range from 250 watts to 400 watts per panel. The exact wattage can vary based on the type and brand of the panel, ...



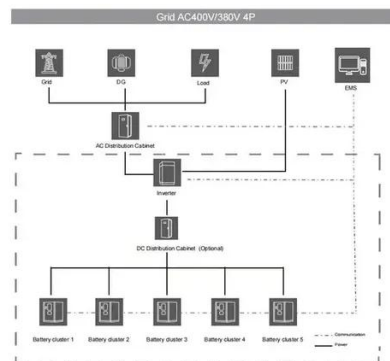
[How Many Watts Per Solar Panel: What You Need to Know](#)

Solar panels come in various sizes and efficiencies, typically ranging from 250 to 400 watts per panel. This variation can depend on several factors, including the type of solar ...



Solar Panel Wattage & Output Explained

Most residential solar panels in 2025 are rated between 350W and 480W, while commercial modules can exceed 600W. How do manufacturers determine wattage? They test ...



Understanding Solar Panel Sizes and Wattage: A ...

When considering solar panel sizes and wattage, you'll typically find options ranging from 250 to 400 watts. Opting for higher ...

Solar Panel Wattage Explained: How Many Watts Do You Need?

This guide will explain solar panel wattage clearly, with real-life examples and simple calculations anyone can follow. Whether you're a homeowner exploring solar energy or a ...





Contact Us

For inquiries, pricing, or partnerships:

<https://www.sccd-sk.eu>

Phone: +32 2 808 71 94

Email: info@sccd-sk.eu

Scan QR code for WhatsApp.

