



How many watts is normal for solar container outdoor power





Overview

Higher panel wattage allows for faster recharging (under good sun conditions!). A common starting point is selecting panel wattage that's roughly 10-20% of your station's Wh capacity (e.g., a 100W-200W panel for a 1000Wh station).

Higher panel wattage allows for faster recharging (under good sun conditions!). A common starting point is selecting panel wattage that's roughly 10-20% of your station's Wh capacity (e.g., a 100W-200W panel for a 1000Wh station).

How many watts does outdoor solar energy usually use?

Outdoor solar energy systems typically utilize around 100 to 400 watts depending on several factors. 1. The size of the solar panel system plays a critical role, as larger systems generate more power. 2. The amount of sunlight exposure also.

How much power a single solar panel can capture depends on the rated wattage, the size, and the structure of the panel — as well as numerous environmental factors. Depending on your desired setup, portable solar panels may be better for your needs than a fixed installation — they might even produce.

Then figuring out how many watts you need for solar power can be the difference between a smooth adventure and running out of power at the worst possible moment! Whether you're camping, hiking the trails, or hosting an outdoor gathering, understanding your equipment's power consumption is crucial.

How Much Solar Power Do I Need for My Shed?

For the average shed, it would need around 2.7 kilowatt peak (kWp) direct current (DC). Kilowatt peak, or power DC (kWp), refers to the peak output of the solar power system. If a solar panel has a peak power of 4kWp, the solar panel will produce 4kWp.

A 100-watt panel can produce 100 watts per hour in direct sunlight. A 400-watt panel can generate 400 watts per hour under the same conditions. This doesn't mean they'll produce that amount all day, output varies with weather, shade, and panel orientation. Renogy 200W Portable Solar Panel, IP65.



An off-grid solar system's size depends on factors such as your daily energy consumption, local sunlight availability, chosen equipment, the appliances that you're trying to run, and system configuration. Below is a combination of multiple calculators that consider these variables and allow you to.



How many watts is normal for solar container outdoor power

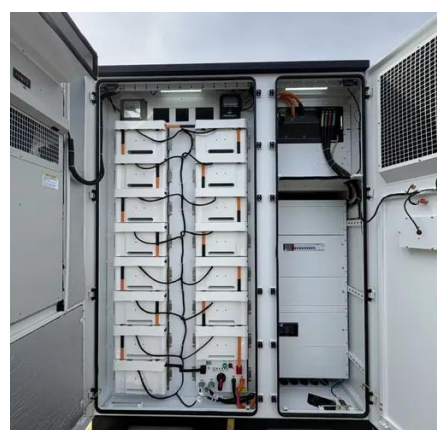


[How Much Solar Power Do I Need for My Shed?](#)

Determine the solar power needed for your shed based on energy consumption, panel size, and sunlight availability for a cost-effective setup.

[Solar Panel Wattage Explained: How Many Watts Do You Need?](#)

This guide will explain solar panel wattage clearly, with real-life examples and simple calculations anyone can follow. Whether you're a homeowner exploring solar energy or a ...



[Beginner's Guide: Sizing Your Off-Grid Solar System](#)

Learn how to accurately size your solar system with this comprehensive guide. Determine the panels, batteries, controller, and inverter required for your setup. Calculate load sizing, solar ...

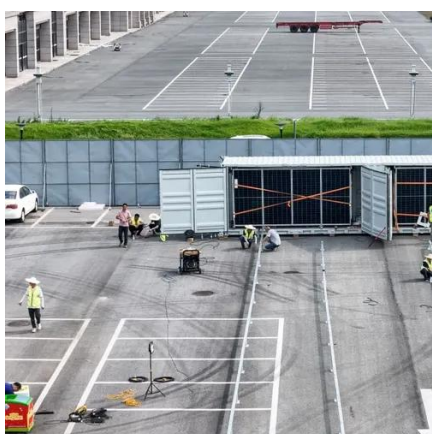
[The Complete Off Grid Solar System Sizing ...](#)

Using your daily energy usage and Peak Sun Hours, and assuming a system efficiency of 70%, the calculator estimates the ...



[How Much Solar Power Do I Need for My Shed?](#)

This guide will explain solar panel wattage clearly, with real-life examples and simple calculations anyone can follow. Whether you're a ...



[The Complete Off Grid Solar System Sizing Calculator](#)

Using your daily energy usage and Peak Sun Hours, and assuming a system efficiency of 70%, the calculator estimates the Wattage required for your off-grid solar system's ...



[How Much Solar Power Do I Need for Off-Grid Camping?](#)

Unsure what size solar panel you need? Our simple guide calculates your energy needs, so you can choose between blankets or fixed panels, and extend your off-grid stays.



[Beginner's Guide: Sizing Your Off-Grid Solar System](#)

Learn how to accurately size your solar system with this comprehensive guide. Determine the panels, batteries, controller, and inverter required ...



How to Calculate Power Output of a 20-Foot Solar Container: ...

The power output of a solar container depends on several factors, including total installed capacity, peak sunlight hours, and system efficiency. Below is a simplified method to calculate ...

[How many watts does outdoor solar energy usually use?](#)

A standard residential solar panel typically generates between 250-300 watts, but outdoor solar panels might require differing amounts of power depending on their application. ...



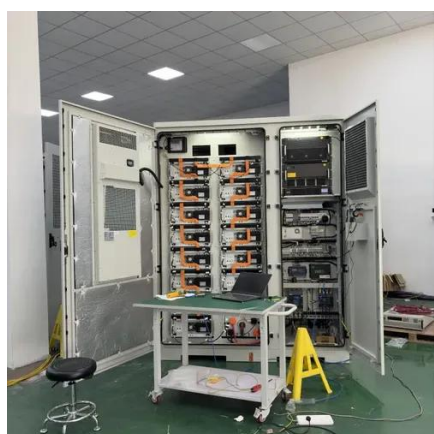
How Many Watts Do You Need for Solar Power Outdoor Activities

This guide simply breaks down key terms like watts and watt-hours, helps you estimate your needs, and offers tips so you can plan your portable solar setup more effectively.



How Much Power Can a Portable Solar Panel Generate?

The actual output from your portable solar panels depends on factors such as the angle at which they face the sun, obstructions, and any other elements that may block ...



How many watts of outdoor solar energy are enough to power

To determine how many watts of outdoor solar energy are sufficient to power a particular system or appliance, multiple factors must be taken into consideration.



Contact Us

For inquiries, pricing, or partnerships:

<https://www.sccd-sk.eu>

Phone: +32 2 808 71 94

Email: info@sccd-sk.eu

Scan QR code for WhatsApp.

