



# How many watts per square meter of a single crystal solar panel





## Overview

---

On average, monocrystalline panels can produce between 150 to 220 watts per square meter, making them a popular choice for residential and commercial solar installations. Polycrystalline solar panels consist of multiple silicon crystals, which are fused.

On average, monocrystalline panels can produce between 150 to 220 watts per square meter, making them a popular choice for residential and commercial solar installations. Polycrystalline solar panels consist of multiple silicon crystals, which are fused.

Solar panels often produce between 100 to 400 watts per square meter, 2. The average efficiency of most solar panels is about 15-20%, 3. Various factors affecting this include location, angle, and weather, 4. Type of solar technology, such as monocrystalline versus polycrystalline, significantly.

Solar panels have become a cornerstone of renewable energy, but many wonder: How much power can a single square meter of solar panels actually produce?

Let's break down the science behind photovoltaic efficiency. Under optimal conditions (5 peak sun hours): At noon under direct sunlight: \*Note: 1m<sup>2</sup>.

These standardized conditions include 1,000 watts per square meter of solar irradiance, 25°C cell temperature, and air mass of 1.5. The basic solar panel wattage formula is:  $\text{Wattage} = \text{Voltage} \times \text{Current}$  However, real-world applications require more sophisticated calculations accounting for.

Solar panel watts per square meter (W/m) measures the power output of a solar panel based on its size. Compare solar panels to see which generates most electricity per square meter. A higher W/m value means a solar panel produces more power from a given area. This can help you determine how many.

Estimate your solar energy production per m<sup>2</sup> with accurate calculations for any location. Free calculator with multiple units, efficiency modes, and detailed visualizations. This calculator provides estimates only and should not be used as the sole basis for solar system purchases or financial.



One of the key metrics used to evaluate the efficiency and effectiveness of solar panels is the watts per square meter ( $W/m^2$ ) measurement. In this comprehensive guide, we'll delve into the intricacies of watts per square meter for solar panels, exploring what they are, how they work, and why they. What is watts per square meter?

Watts per square meter is a measurement that quantifies the power output of solar panels relative to their surface area. It indicates how much electricity a solar panel produces per space unit, allowing for comparisons between different panel types and sizes.

What is solar panel watts per square meter (W/M)?

Solar panel watts per square meter (W/m) measures the power output of a solar panel based on its size. Compare solar panels to see which generates most electricity per square meter. A higher W/m value means a solar panel produces more power from a given area. This can help you determine how many solar panels you need for your energy needs.

How much power does a solar panel produce?

The power output of a solar panel depends on various factors, including its efficiency, the intensity of sunlight, and environmental conditions. On average, a standard solar panel with an area of 1 square foot can produce around 10-20 watts of power.

How many Watts Does a solar panel use per square foot?

The average solar panel's wattage per square foot is 15 watts, though high-efficiency panels can achieve 20+ watts per square foot. Standard residential panel dimensions are approximately 17.5 square feet ( $6.5' \times 3.25'$ ), while commercial panels typically measure around 21 square feet.



## How many watts per square meter of a single crystal solar panel

---



### [Watts Per Square Meter Solar Panel - The Go-to ...](#)

Watts per square meter ( $W/m^2$ ) is the power density of sunlight falling on a given area of solar panels. In the context of solar ...

### Solar Panel Output Per Square Meter

Discover how much electricity solar panels generate per square meter, explore efficiency factors, technology comparisons, and future innovations in photovoltaic energy.



### [How many watts per square meter of solar panels](#)

Monocrystalline panels, renowned for their sleek appearance and high efficiency, are made from single-crystal silicon. They generally ...

### [How Much Power Does A Single Solar Panel Generate?](#)

**Solar Panel Wattage:** The wattage rating of a solar panel represents the maximum power output it can achieve under standard test conditions (STC),



which include a sunlight ...



### **PVWatts Calculator**

NREL's PVWatts ® Calculator Estimates the energy production of grid-connected photovoltaic (PV) energy systems throughout the world. It allows homeowners, small building owners, ...

### [How many watts per square meter of solar panels , NenPower](#)

Monocrystalline panels, renowned for their sleek appearance and high efficiency, are made from single-crystal silicon. They generally produce more power per square meter ...



### [Watts Per Square Meter Solar Panel - The Go-to Guide](#)

Watts per square meter ( $W/m^2$ ) is the power density of sunlight falling on a given area of solar panels. In the context of solar panels, it refers to the amount of electrical power a ...



## Solar Panel Output Per Square Meter

Discover how much electricity solar panels generate per square meter, explore efficiency factors, technology comparisons, and ...



### [Solar Panel Wattage Calculation: How To Calculate In 2025?](#)

These standardized conditions include 1,000 watts per square meter of solar irradiance, 25°C cell temperature, and air mass of 1.5. The basic solar panel wattage formula is:  $Wattage = Voltage \times Current$  ...

### [Solar Power Per Square Meter Calculator](#)

Here's what's shocking: A single square meter of solar panel can generate anywhere from 150 to 250 watts under ideal conditions. But "ideal" rarely exists in real life. Your roof's orientation, ...



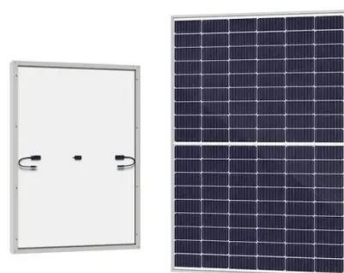
### [Solar Panel Wattage Calculation: How To ...](#)

These standardized conditions include 1,000 watts per square meter of solar irradiance, 25°C cell temperature, and air mass of 1.5. The basic solar ...



## [Standard Solar Panel Sizes And Wattages \(100W-500W ...](#)

To bridge that gap of very useful knowledge needed, we have compared and averaged the sizes of 100-watt to 500-watt solar panels available on the market. The goal here is to get to the ...



## [How to Understand Solar Panel Watts Per Square Meter](#)

To determine the watts per square meter, divide the total watts generated by the total surface area covered by the solar panels. For instance, if the combined size of the 20 ...

## [Solar Panel Watts Per Square Meter Explained](#)

Learn how to measure solar panel efficiency using solar panel watts per square meter with this comprehensive guide.

ESS





## Contact Us

---

For inquiries, pricing, or partnerships:

<https://www.sccd-sk.eu>

Phone: +32 2 808 71 94

Email: [info@sccd-sk.eu](mailto:info@sccd-sk.eu)

Scan QR code for WhatsApp.

