



How to arrange the location of the battery cabinet





Overview

Push the right-most battery cabinet into position. For seismic anchoring, ensure that the rear seismic bracket connects to the rear anchors. Lower the levelling feet until they connect with the floor - use a bubble-leveler to ensure that the cabinet is level.

Push the right-most battery cabinet into position. For seismic anchoring, ensure that the rear seismic bracket connects to the rear anchors. Lower the levelling feet until they connect with the floor - use a bubble-leveler to ensure that the cabinet is level.

You've just unboxed your shiny new energy storage cabinet, and suddenly realize it's about as easy to assemble as IKEA furniture without the pictograms. This guide is your lifesaver if you're: With the global energy storage market projected to hit \$546 billion by 2035 according to BloombergNEF.

NOTE: This procedure describes how to position and interconnect several battery cabinets. If your system only has one battery cabinet, you only need to follow step 2 and step 3. Remove the side panels that are adjacent to the other battery cabinets. Push the right-most battery cabinet into.

Creating an effective layout for a battery room is essential for optimizing safety and efficiency, whether it's in a residential, corporate, or industrial context. A carefully designed battery room can enhance productivity significantly. This article will present innovative concepts for structuring.

When planning an energy storage system, the focus often falls on the batteries themselves: their chemistry, capacity, and lifespan. However, an equally critical, though often overlooked, component is the structure that houses them: the rack or cabinet. A battery mounting system is not just a simple.

reduces the battery cabinet's latent electrical shock intensity. This allows a minimization of the required high voltage protective gear needed to be worn by maintenance personnel per NEC Table 310.16 and/or all applicable national and local codes. All access holes are located in the front, rear, and top of the.

Determine Battery Type: Select a cabinet that accommodates the specific batteries



you use, paying attention to size and chemical compatibility. Assess Space Availability: Measure the area where the cabinet will be placed to ensure a proper fit. Check Compliance: Ensure the cabinet meets local. How do I choose a battery storage cabinet?

Regulatory Compliance: Choose a cabinet that meets safety standards for Class 9 Dangerous Goods. Durability: Look for a heavy-duty lithium battery storage case designed for long-term use. Ventilation Needs: If charging is required, ensure the cabinet includes an integrated cooling system.

How do you reinstall a battery cabinet?

Reinstall the left side panel on the left-most battery cabinet after interconnection. Push the third battery cabinet into position, align with the seismic anchoring (if any), level the battery cabinet, and interconnect with the other battery cabinets as described in step 2, step 3, and step 5.

How do I choose a lithium-ion battery storage cabinet?

When selecting a lithium-ion battery storage cabinet, consider the following: Capacity Requirements: Ensure the cabinet accommodates the quantity and size of batteries used in your workplace. Regulatory Compliance: Choose a cabinet that meets safety standards for Class 9 Dangerous Goods.

How do you level a battery cabinet?

Remove the side panels that are adjacent to the other battery cabinets. Push the right-most battery cabinet into position. For seismic anchoring, ensure that the rear seismic bracket connects to the rear anchors. Lower the levelling feet until they connect with the floor - use a bubble-leveler to ensure that the cabinet is level.



How to arrange the location of the battery cabinet



[2 Easy DIY Battery Organizer Shelves for UNDER \\$5!](#)

In this easy DIY project, I'll show you how to build 2 different styles of battery-organizing shelves--both for less than \$5--to fit nearly any workshop or garage layout! ?? Whether

[The Ultimate Guide To Organizing Your Batteries](#)

Say goodbye to cluttered battery drawers and learn how to organize your batteries effectively. Check this guide for helpful tips and tricks.



Maximize Safety and Space: The Essential Guide to Battery ...

Choose a well-ventilated, dry area away from direct sunlight or heat sources to maintain optimal battery performance. In conclusion, investing in the right battery storage ...

The Definitive Guide to Racks and Cabinets for Battery Banks

In this comprehensive guide, we will delve deep into the world of battery racks and cabinets. We will demystify their function, analyze different



types and materials, and break ...



The Ultimate Guide to Energy Storage Cabinet Installation Steps ...

You've just unboxed your shiny new energy storage cabinet, and suddenly realize it's about as easy to assemble as IKEA furniture without the pictograms. This guide is your lifesaver if you're:

Optimizing Your Battery Room Design: Essential Tips for Safety ...

A carefully designed battery room can enhance productivity significantly. This article will present innovative concepts for structuring a battery room that not only maximizes ...



[Tips for Designing Battery Cabinets/Enclosures , SBS Battery](#)

There may be multiple ways to configure the cabinet, so consider all possible options. For instance, if a battery, rack and charger are required the system can be designed using a 2 ...



[The Ultimate Guide to Lithium-Ion Battery Storage ...](#)

Discover the importance of lithium-ion battery storage cabinets for safe battery storage and charging. Learn best practices, key ...

- LiFePO₄ Battery, safety
- Wide temperature: -20~55°C
- Modular design, easy to expand
- The heating function is optional
- Intelligent BMS
- Cycle Life: > 6000
- Warranty: 10 years

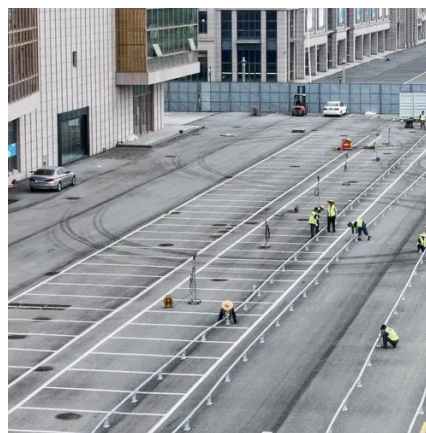


[Position and Interconnect the Battery Cabinets](#)

NOTE: This procedure describes how to position and interconnect several battery cabinets. If your system only has one battery cabinet, you only need to follow step 2 and step 3.

[The Ultimate Guide to Lithium-Ion Battery Storage Cabinets](#)

Discover the importance of lithium-ion battery storage cabinets for safe battery storage and charging. Learn best practices, key features, and how to choose the right battery ...



Maximize Safety and Space: The Essential Guide to Battery Storage Cabinets

Choose a well-ventilated, dry area away from direct sunlight or heat sources to maintain optimal battery performance. In conclusion, investing in the right battery storage ...



BC58 Battery Cabinet Installation, Operation, & Maintenance ...

The option provides functional access to the equipment circuit breaker via a handle located on the exterior of a cabinet door that is physically connected to the circuit breaker in the cabinet's ...





Contact Us

For inquiries, pricing, or partnerships:

<https://www.sccd-sk.eu>

Phone: +32 2 808 71 94

Email: info@sccd-sk.eu

Scan QR code for WhatsApp.

