



How to connect battery cabinet bcb in series





Overview

To connect batteries in series, you connect the positive terminal of one battery to the negative terminal of another until the desired voltage is achieved. Don't cross the remaining open positive and open negative with each other. It will short circuit the batteries and may cause.

To connect batteries in series, you connect the positive terminal of one battery to the negative terminal of another until the desired voltage is achieved. Don't cross the remaining open positive and open negative with each other. It will short circuit the batteries and may cause.

The first thing you need to know is that there are three primary ways to successfully connect batteries: The first is via a series connection, the second is called a parallel connection, and the third option is a combination of the two called a series-parallel connection. Connecting batteries in.

If you need to increase the total amount of volts, connect the batteries together in a series. To increase the total capacity, or amps, use a parallel connection. Choose a series connection to add voltage and make a battery bank. A series connection combines the voltage of the 2 connected batteries.

Figure 2 shows two 12-volt batteries connected in series. The important things to note about a series connection are: The battery voltages add together to determine the battery pack voltage. In this example the resulting pack voltage is 24 volts. The capacity of the battery pack is the same as that.

There are two ways to wire batteries together, parallel and series. The illustrations below show how these set wiring variations can produce different voltage and amp hour outputs. In the graphics we've used sealed lead acid batteries but the concepts of how units are connected is true of all.

Before connecting batteries in series or parallel, it is important to balance them to reduce voltage differences and optimize their performance. For lithium batteries, visit [Lithium Battery Balancing](#). Wiring the batteries up to achieve the necessary capacity is akin to the internal battery wiring.

How to connect a battery depends on your needs—use a series connection to



increase voltage or a parallel connection to increase capacity. In this article, we'll guide you through batteries in series methods to help you power your application efficiently. Connecting batteries is a simple way to.



How to connect battery cabinet bcb in series

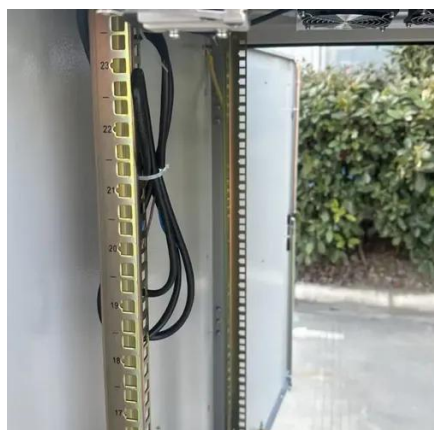


[How to Connect Batteries in Series \(Step-by-Step ...\)](#)

Learning how to connect batteries in series opens up a world of possibilities for your power systems. Whether you're building a solar ...

[How Do You Connect Batteries in Series or Parallel?](#)

Use this handy step-by-step guide if you need to connect your batteries in series, parallel or series-parallel. A great example of an ...

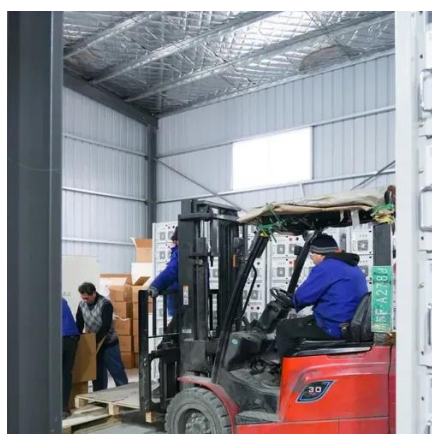


McGraw-Hill Connect

Your instructor may have already set up a Connect course for your class. If so, you should join it now rather than registering for the Self-Study.

McGraw Hill Education

Sign in to McGraw Hill Education to access educational tools and resources for enhanced learning and teaching.

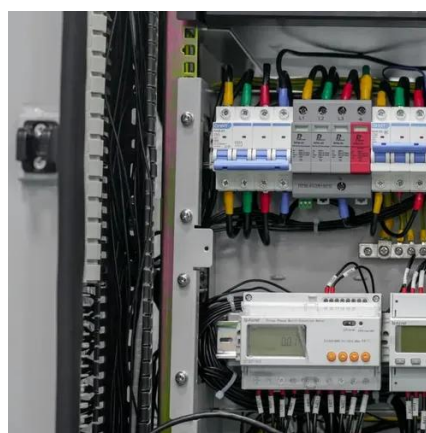


[Kids Connection Private School , Foster City, California](#)

Our program develops deep understanding in reading, writing, math, social studies, and science while sharpening critical thinking and problem-solving skills. Through hands-on learning, ...

KIDS CONNECTION SCHOOL

Ranked in the top 1% of schools nationwide, we provide academically accelerated programs. We keep class sizes small to allow every child the opportunity for individual attention. Preschool ...



CONTACT US

How did you hear about Kids Connection? (Please check all that apply) * Apply Now! © 2026 Kids Connection. All rights reserved. Proudly created by S5P.



Sign In , Connect , McGraw Hill

Forgot your password? By clicking "Sign In", I confirm that I have read and agree to the terms of the McGraw Hill Terms of Use, the Video Viewing Notice, the Consumer Purchase Terms if ...



[Connecting batteries in series - BatteryGuy Knowledge Base](#)

There are two ways to wire batteries together, parallel and series. The illustrations below show how these set wiring variations can produce different voltage and amp hour ...

[How to Connect Batteries in Series \(Step-by-Step Guide\)](#)

Learning how to connect batteries in series opens up a world of possibilities for your power systems. Whether you're building a solar setup, upgrading your RV, or creating a ...



Kids' Connection

For general inquiries or additional information about Certified Nonpublic Schools, please send an email to nps@cde.ca.gov, or visit the Data Collection and Reporting web page.



[How To Connect A Battery -- Batteries In Series](#)

How to connect a battery depends on your needs--use a series connection to increase voltage or a parallel connection to increase ...



[Batteries and Chargers Connected in Series and Parallel](#)

Learn how to connect batteries in series and parallel for different voltage and amp-hour capacities. Battery Tender® offers detailed instructions and diagrams for safely charging and configuring ...

[How Do You Connect Batteries in Series or Parallel?](#)

Use this handy step-by-step guide if you need to connect your batteries in series, parallel or series-parallel. A great example of an application that uses series connections is a ...



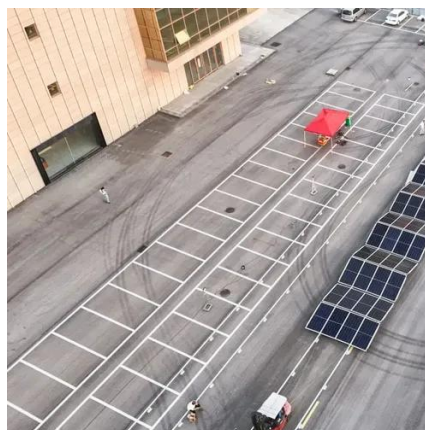
How to Connect Batteries in Series

Learn how to connect batteries in series safely and correctly to increase voltage for your devices and power needs.



[How To Connect A Battery -- Batteries In Series](#)

How to connect a battery depends on your needs--use a series connection to increase voltage or a parallel connection to increase capacity. In this article, we'll guide you ...

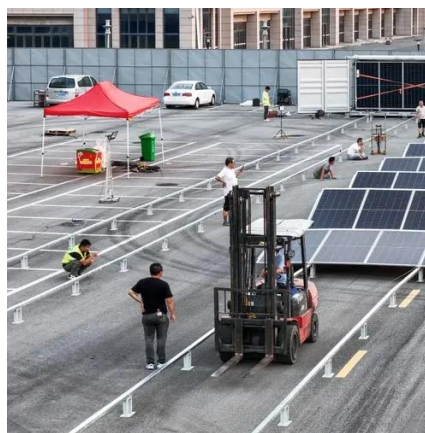


Connect Student Support

Looking for Connect Support? Below are videos and guides for the most common Connect student support topics. Please contact us if you can't find what you need, and our team will be ...

[Series and Parallel Battery Connections](#)

To connect batteries in series, you connect the positive terminal of one battery to the negative terminal of another until the desired voltage is achieved. Don't cross the remaining open ...



[Series and Parallel Battery Connections](#)

To connect batteries in series, you connect the positive terminal of one battery to the negative terminal of another until the desired voltage is ...



[Connect Student Support , McGraw Hill Canada](#)

That's where Connect comes in. Connect is a personalized digital learning platform that adapts to your needs, saving you time and making studying for exams simple.



[Connect , Learning Software , McGraw Hill Higher Education](#)

With Connect, each of your students can enjoy a personalized digital learning experience designed to help them optimize study time and ramp up their grade potential.



[How To Connect Batteries In Series and Parallel](#)

If you have two sets of batteries connected in series, you can wire both sets into a parallel connection to make a series-parallel battery bank. In the images below we will walk ...



Series, Parallel, and Series-Parallel Connections of Batteries

To ensure optimal battery performance and longevity, it is essential to properly match batteries with similar characteristics, including capacity, voltage, and chemistry, when connecting them ...





Series, Parallel, and Series-Parallel Connections of ...

To ensure optimal battery performance and longevity, it is essential to properly match batteries with similar characteristics, including capacity, ...



Simple Ways to Connect Batteries in a Series: 12 Steps

Choose a series connection to add voltage and make a battery bank. A series connection combines the voltage of the 2 connected batteries to create a bank of batteries that ...



Contact Us

For inquiries, pricing, or partnerships:

<https://www.sccd-sk.eu>

Phone: +32 2 808 71 94

Email: info@sccd-sk.eu

Scan QR code for WhatsApp.

