



How to connect the 380V battery cabinet





Overview

How do you install a classic Battery Cabinet?

Position the Empty Classic Battery Cabinet. Mechanical installation. Follow one of the procedures: Mechanical Installation for Bottom Cable Entry. Mechanical Installation for Top Cable Entry. Mechanical Installation for Bottom Cable Entry. Mechanical Installation for Top Cable Entry. Connect the Signal Cables. Connect the Power Cables from the UPS.

How to install UPS & battery cabinet?

1. Installation sequence is as follows: 1.1 First, determine the installation location of the UPS and battery cabinet upon arrival at the site. 1.2. Install the battery connection Wires.

How to connect a UPS battery to a host?

F. Before connecting the battery cables from the battery cabinet to the host, measure the battery voltage with a multimeter, which should be 103.36V, and check if the positive and negative leads are correctly connected. If there is a battery box, connect the batteries in series and link them to the host as required. 2. UPS Battery Wiring Example A.

How to install a battery switch?

1.2. Install the battery connection Wires. A. Determine the location of the battery switch, the positive and negative directions of the batteries in the battery cabinet, and install the air switch and terminal connectors on the battery cabinet. B. Connect the positive terminal of the battery to the air switch.



How to connect the 380V battery cabinet

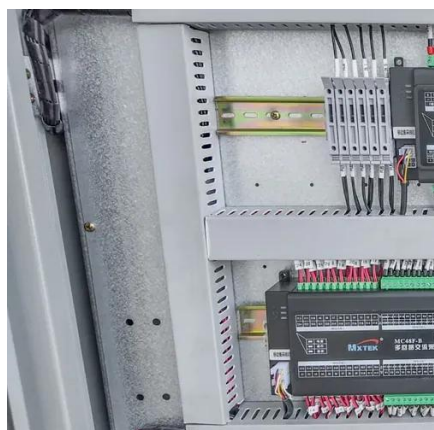
[ZincFive BC Series UPS Battery Cabinets](#)



The battery cabinet must be installed in a temperature controlled area free of conductive contaminants. Install on a level, solid surface (e.g. concrete or floor stand) that can support the ...

[Vertiv™ Liebert® ITA2 Battery Cabinet](#)

Connect a battery-to-battery cable to Connector B on the first cabinet in the previous string, and to Connector A on first cabinet in the additional string. Connect the second string in additional ...



Installation Procedure

Connect the Signal Cables. Connect the Power Cables from the UPS. Install and Connect the Batteries. Final Installation. Was this helpful?

[/15/20KVA UPS Battery Cabinet Installation and Operation ...](#)

Installation or replacement of batteries must be located in a SERVICE ACCESS AREA: The service manual shall include the following instructions for



battery replacement and disposal:

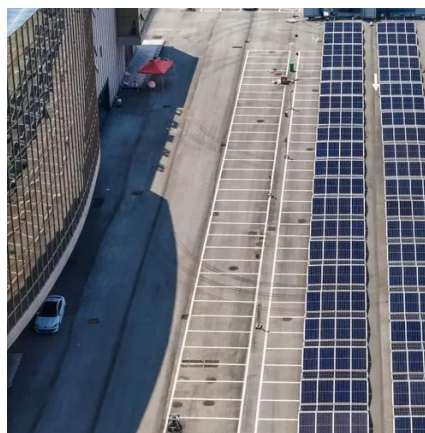


[Powerware 9390 Integrated Battery Cabinet \(Models IBC-S ...](#)

Route the ground wire (from the field kit) from the ground stud in one battery cabinet, under the lower battery tray and through the cabinet-to-cabinet cable access area in the side of the ...

[UBC80 Battery Cabinet Installation, Operation.](#)

Install the main POS and NEG cables from the output circuit breaker to the correct battery posts on the designated battery units shown in the provided battery system schematic.



How to do UPS Battery Wiring?

Learn how to wire UPS batteries safely with our detailed step-by-step guide. From installation location to proper battery connection and wiring tips, ensure a secure and efficient UPS setup ...



[Liebert® EXS External Battery Cabinet Installer/User Guide](#)

Bolt-On Cabinets -- Matching battery cabinets are designed to bolt on either the left or right side of the UPS module cabinet. Use bolts that ship with each unit to connect cabinet frames at ...



Install and Connect the Batteries

Connect the battery cables (Batt+, N, Batt-) from the batteries in the empty classic battery cabinet to the battery breaker. Install the protection cover over the terminals on the right side of the ...

[93E MK2 10-40kVA Official Release03_EN](#)

Please read all instructions before operating the equipment and save this manual for future reference. The sales of this product is strictly restricted to knowledgeable service partner ...





Contact Us

For inquiries, pricing, or partnerships:

<https://www.sccd-sk.eu>

Phone: +32 2 808 71 94

Email: info@sccd-sk.eu

Scan QR code for WhatsApp.

