



How to decouple the batteries in the battery cabinet





Overview

The right tool is usually a 10mm wrench —but check your battery terminals, as some may vary. Always loosen the negative terminal first (marked with a minus sign or black cable). Once loose, lift the clamp off and move it aside so it doesn't touch anything.

The right tool is usually a 10mm wrench —but check your battery terminals, as some may vary. Always loosen the negative terminal first (marked with a minus sign or black cable). Once loose, lift the clamp off and move it aside so it doesn't touch anything.

On the 1000 mm wide classic battery cabinet, remove two screws to open the left door. Lockout/Tagout the battery breaker in the OFF (open) position. Remove the breaker protection plates. Remove the terminal cover from the left side of the battery breaker. Disconnect and remove the DC cables, N.

You're ready to remove the battery—maybe to replace it, clean the terminals, or store your car for winter. It looks simple enough, right?

But here's the thing: disconnecting a battery isn't just about loosening bolts. One wrong step, and you could short-circuit your electrical system or even injure.

It's always a good idea to disconnect the battery before working on your vehicle's ignition system or other electrical components. (If you need to fully remove or replace the battery, follow this guide instead.) This guide uses a Toyota Corolla to demonstrate the procedure, which is similar for.

Whether you're doing a repair, replacing your battery, or putting your car in storage, knowing how to safely disconnect the battery is essential. Follow these simple steps to do it the right way. **THE MOST IMPORTANT RULE:** Always disconnect the **NEGATIVE** terminal first, then the **POSITIVE**. When you.

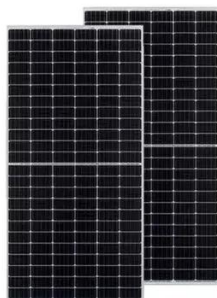
Disconnecting a car battery is a straightforward task requiring careful attention to the proper procedure and safety precautions. Read on to learn how to safely disconnect your battery and get answers to questions you might have when preparing to service the vehicle or install a new battery.



Failure to remove your battery can lead to discharging and even a reduced battery life due to corrosion. Should you choose to run the risk and leave your car battery in for the duration of storage anyway, expect a battery replacement, added costs, and system malfunctions — all thanks to one.



How to decouple the batteries in the battery cabinet



[How to Disconnect & Connect a Car Battery](#)

Let's review how to disconnect and connect your vehicle's battery safely as well as other considerations to remember before tackling this important job.

How to Disconnect a Car Battery for Storage: A Step-by-Step Guide

Like trickle chargers, a battery tender can keep your car battery operational during storage. Connect it to your battery terminals, plug it into a power source, and turn it on.



[How to Disconnect a Car or Truck Battery](#)

It's always a good idea to disconnect the battery before working on your vehicle's ignition system or other electrical components. (If you need to fully remove or replace the ...)

[How to Disconnect a Car Battery: Common Mistakes to Avoid](#)

Whether you're performing maintenance, replacing the battery, or storing your vehicle, knowing how to disconnect a car battery correctly



is essential. In this guide, we'll walk ...



[How to Safely and Easily Disconnect a Car Battery](#)

Protect yourself with utility work gloves and safety goggles. Disconnect the negative terminal first, then the positive terminal. Set aside 10-15 minutes to disconnect the ...



[How to Disconnect a Car Battery for Storage: A ...](#)

Like trickle chargers, a battery tender can keep your car battery operational during storage. Connect it to your battery terminals, ...



How to Disconnect a Car Battery

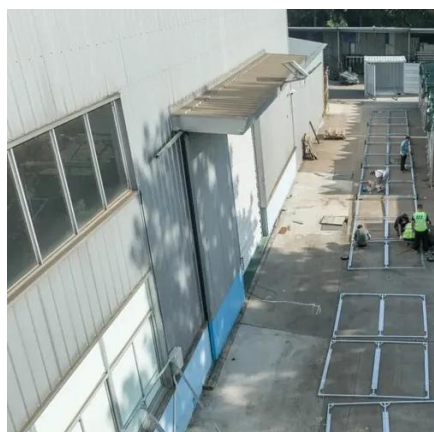
Read on to learn how to safely disconnect your battery and get answers to questions you might have when preparing to service the ...





[How to Safely Disconnect Batteries , Jerry Lambert ...](#)

Learn how to safely disconnect a car battery without damaging your vehicle. This guide covers step-by-step instructions, expert tips, real-life ...



How to Disconnect a Car Battery

Read on to learn how to safely disconnect your battery and get answers to questions you might have when preparing to service the vehicle or install a new battery.

[How to Disconnect a Car Battery? A Step-By-Step Guide](#)

Whether you want to connect a new battery, perform maintenance, or prevent some damage, you should know how to disconnect a car battery. If you plan to remove the ...



[How to Safely and Easily Disconnect a Car Battery](#)

Protect yourself with utility work gloves and safety goggles. Disconnect the negative terminal first, then the positive terminal. Set aside 10-15 minutes to disconnect the battery, another 10-20 minutes if you ...



Decommission or Move the Classic Battery Cabinet to a New ...

Remove the kick plates from the front, rear, and sides of the classic battery cabinet. Lift the classic battery cabinet from the left or right side with a pallet truck.



[How to Disconnect a Car Battery? A Step-By-Step ...](#)

Whether you want to connect a new battery, perform maintenance, or prevent some damage, you should know how to ...

[How to Safely Disconnect a Car Battery \(The Right Way\)](#)

Whether you're doing a repair, replacing your battery, or putting your car in storage, knowing how to safely disconnect the battery is essential. Follow these simple steps to do it the



[How to Safely Disconnect Batteries , Jerry Lambert ...](#)

Learn how to safely disconnect a car battery without damaging your vehicle. This guide covers step-by-step instructions, expert tips, real-life examples, and common mistakes to avoid.



Contact Us

For inquiries, pricing, or partnerships:

<https://www.sccd-sk.eu>

Phone: +32 2 808 71 94

Email: info@sccd-sk.eu

Scan QR code for WhatsApp.

