



How to discharge the battery cabinet in the substation





Overview

In this video I have described procedure for initial charging of battery bank of substation. First charging of battery and discharging procedure of battery se.

In this video I have described procedure for initial charging of battery bank of substation. First charging of battery and discharging procedure of battery se.

Battery systems in substations typically supply direct current (DC) to power critical systems such as protective relays, breaker control circuits, automation systems, alarms, and communication infrastructure. In the event of a power outage or voltage instability, these batteries ensure the

power required to keep the batteries at the proper float voltage. When AC power fails, the batteries will discharge in order to provide the necessary backup power to the load. It is the responsibility of the customer to make sure the batteries are not discharged below manufacturer's recommendations.

In this video I have described procedure for initial charging of battery bank of substation. First charging of battery and discharging procedure of battery set in hindi .more In this video I have described procedure for initial charging of battery bank of substation. First charging of battery and.

In large substations, the batteries may be out in the middle of the floor with the pan protruding all the way around the battery rack. Erroneously, the measurements for the required working space about the batteries are many times taken from the terminals of the batteries. How is backup power.

After any battery discharge has occurred, the batteries should be recharged as soon as possible. Batteries will be damaged if not properly recharged right away. See the UPS manual for more information on charging the batteries. 6. SYSTEM SPECIFICATIONS Please refer to system drawings for model.

The charger and distribution switchboard are normally located in the same room, separate to the battery. The main fuses of the battery are housed in separate plastic boxes, one for plus connection and one for minus connection. These main fuse boxes should be placed close to the battery itself. The.



How to discharge the battery cabinet in the substation



[Substation Maintenance Procedures Guide .PDF , Transformer](#)

2.1.2 The substation inspection should be carried out by trained maintenance personnel and in accordance with this procedure and the manufacturer's instructions.

[Understanding Batteries in Substations](#)

Learn about the critical role of batteries in substations and field devices like reclosers. Explore the different types of batteries used, their functions, and the benefits they ...



[Substation DC Auxiliary Supply - Battery And Charger](#)

Usually at the distribution switchboard there is provided a separate fuse switch output for connecting external battery discharger equipment, as shown in Figure 1. This output can be ...

[Electrical Substations , PDF , Battery Charger](#)

This document provides guidelines for installing and maintaining substation batteries and battery chargers. It discusses the functions of batteries in



...



PROCEDURE FOR INITIAL CHARGING OF BATTERY BANK IN SUBSTATION ...

In this video I have described procedure for initial charging of battery bank of substation, first charging of battery and discharging procedure of battery.



BC58 Battery Cabinet Installation, Operation, & Maintenance ...

Battery cabinets that are not supplied with an incorporated DC output disconnect device must have an appropriate disconnect device provided external to the cabinet.



[Install and Maintain Substation DC Systems , PDF ...](#)

These include excessive battery weight, a steep voltage drop-off relative to the state of charge, high self-discharge rates, limited charging speed, and ...





PROCEDURE FOR INITIAL CHARGING OF BATTERY BANK IN ...

In this video I have described procedure for initial charging of battery bank of substation first charging of battery and discharging procedure of battery



Install and Maintain Substation DC Systems , PDF , Rechargeable Battery

These include excessive battery weight, a steep voltage drop-off relative to the state of charge, high self-discharge rates, limited charging speed, and speciality manufacturing nearly ceasing.

How to discharge the battery cabinet in the substation quickly

The primary role of the substation battery system is to provide a source of energy that is independent of the primary ac supply, so that in the event of the loss of the primary supply the ...



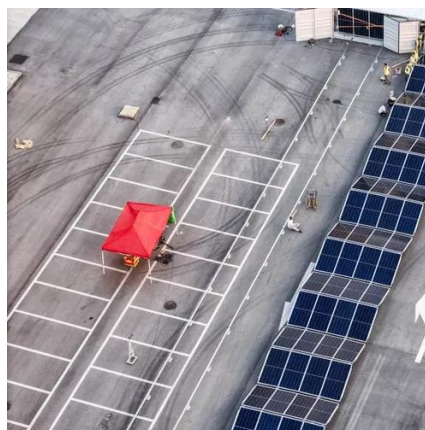
Powering Up Safely: The Ins and Outs of Substation Battery ...

Learn best practices for substation battery installation and maintenance. Discover how reliable battery systems support substation protection and avoid costly outages.



[Substation Maintenance Procedures Guide .PDF](#)

2.1.2 The substation inspection should be carried out by trained maintenance personnel and in accordance with this procedure and the manufacturer's ...

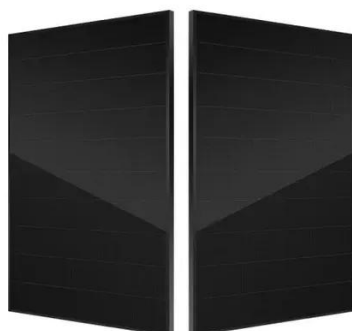
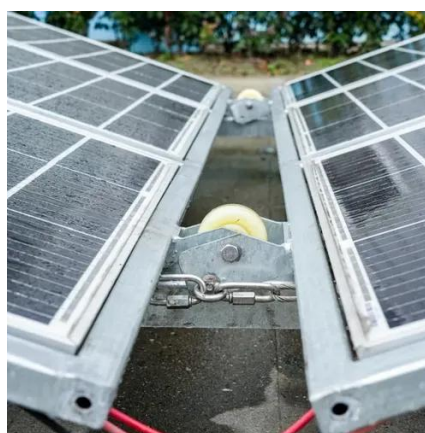


[755-00086 R02 BC16 MITSUBISHI MANUAL](#)

The BC16 battery cabinet is equipped with four casters, two swivel types in front and two rigid types in the back. Move the cabinet into the desired location and lock the front casters.

[Understanding Batteries in Substations](#)

Learn about the critical role of batteries in substations and field devices like reclosers. Explore the different types of batteries used, ...



Electrical Substations , PDF , Battery Charger , Battery (Electricity)

This document provides guidelines for installing and maintaining substation batteries and battery chargers. It discusses the functions of batteries in substations including supplying power to ...



Contact Us

For inquiries, pricing, or partnerships:

<https://www.sccd-sk.eu>

Phone: +32 2 808 71 94

Email: info@sccd-sk.eu

Scan QR code for WhatsApp.

