



How to turn off the base station power mode





Overview

You can turn this feature on/off at any time by navigating to SteamVR->Settings->Base Station->Power Management. When this feature is ON, your Base Stations will go into standby when SteamVR is not in use and wake up when SteamVR starts.

You can turn this feature on/off at any time by navigating to SteamVR->Settings->Base Station->Power Management. When this feature is ON, your Base Stations will go into standby when SteamVR is not in use and wake up when SteamVR starts.

Although Base Stations should arrive correctly configured, you can change their channel settings from the SteamVR status window if the Base Station Setup Error message appears. To do this: Navigate to the SteamVR status window. Wait for SteamVR to identify nearby base stations, then either select.

How do you turn off the 2.5 ghz base?

No power bu - Q&A - Best Buy "How do you turn off the 2.5 ghz base?"

No power button and I set the auto shutoff to one minute and nothing. Always powered on and will cause burnin on fhe oled display." Hello! Great question! There is a powersave mode, which.

Trying to figure out how I suppose to turn off vr headset and base stations?

I clicked box about sleep mode in steam for base stations. But when I unplugged power adapter of my valve headset my base station still has green light. It not becoming blue, so it is not sleep mode and motor working?

How.

How do you get the power control to work in Steam VR anymore?

I can't get mine to shutdown anymore. There is no base station power menus anymore in steam VR as of last update. I hear them running and spinning all night. unplug them?



Obviously just a work-around but just unplug them. Maybe they need.

To spare you the scroll marathon in this thread, here the list of the currently known solutions to power off your basestations remotely: LH v2 (python): [GitHub - nouser2013/lighthouse-v2-manager](#): This python script helps you switch your Steam HMD lighthouses V2 on and into stand-by. Hi everyone.

And in case my computer crashed, I had to turn it back on just to start and close SteamVR to turn off the base stations. more It really bothered me that always one of my base stations didn't go into standby mode. And in case my computer crashed, I had to turn it back on just to start and close.



How to turn off the base station power mode

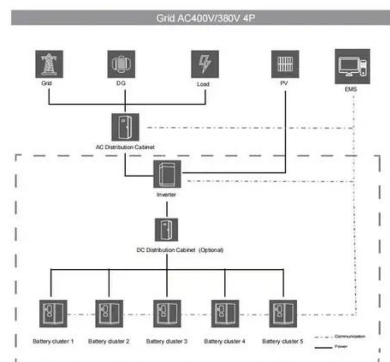


[How to turn off Index and Base stations right to ...](#)

The radio that communicates with the base station is in the headset. ...

[How to turn off a robot or base station? - Dreame India](#)

If you need the base station to completely shut down, please unplug the power cord of the base station. Reminder: It is not recommended to power off during daily use.



How To Turn Off HTC Vive Stations

Learn how to easily disable HTC Vive base stations and conserve power when not in use. Follow these simple steps to turn off your stations and extend their lifespan.

[My A50 + Base Station is not charging or will not turn off.](#)

If the A50 headset is not responding to on/off press and hold the power button to begin pairing the unit. Once it turns white and begins to flash,



press the button again and see if the headset ...



[Automated power management for SteamVR base station](#)

A tool to manage the power of SteamVR base stations. You can control the power of the base stations without HTC Vive or Valve Index by linking it to the start and end of SteamVR.

[How to Power Off Basestations remotely \[SOLVED\]](#)

To spare you the scroll marathon in this thread, here the list of the currently known solutions to power off your basestations remotely:



[Automated power management for SteamVR base ...](#)

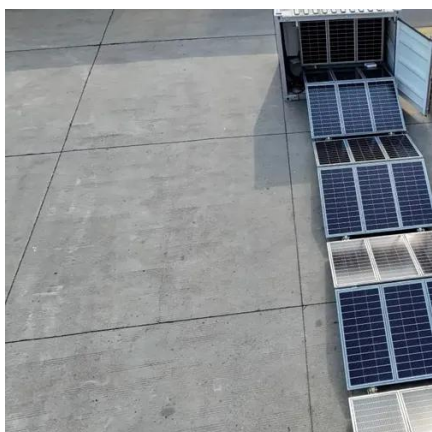
A tool to manage the power of SteamVR base stations. You can control the power of the base stations without HTC Vive or Valve Index by linking it to ...





BS Companion

And in case my computer crashed, I had to turn it back on just to start and close SteamVR to turn off the base stations. The result is this app for HTC/Valve base stations, which



[How do you turn off the 2.5 ghz base? No power bu](#)

There is a powersave mode, which should turn off the base station when it is not being used. for additional questions, please be sure to connect with our support team, we would be more than ...

BS Companion

And in case my computer crashed, I had to turn it back on just to start and close SteamVR to turn off the base stations. The result is this app for ...



[Index Base Station & Lighthouse Tracking](#)

You can turn this feature on/off at any time by navigating to SteamVR->Settings->Base Station->Power Management. When this feature is OFF, your Base Stations will remain powered and ...



[How to turn off Index and Base stations right to made them](#)

The radio that communicates with the base station is in the headset. When you exit SteamVR and enable power saving, it puts the bases into sleep mode using that wireless ...



Turn off Valve Index Base Stations

My issue is I have 3 base stations and a large 2-room setup for my PC vs living room, so I can't see all three base stations at the same time. When I turn it off, if it can't see ...



Contact Us

For inquiries, pricing, or partnerships:

<https://www.sccd-sk.eu>

Phone: +32 2 808 71 94

Email: info@sccd-sk.eu

Scan QR code for WhatsApp.

