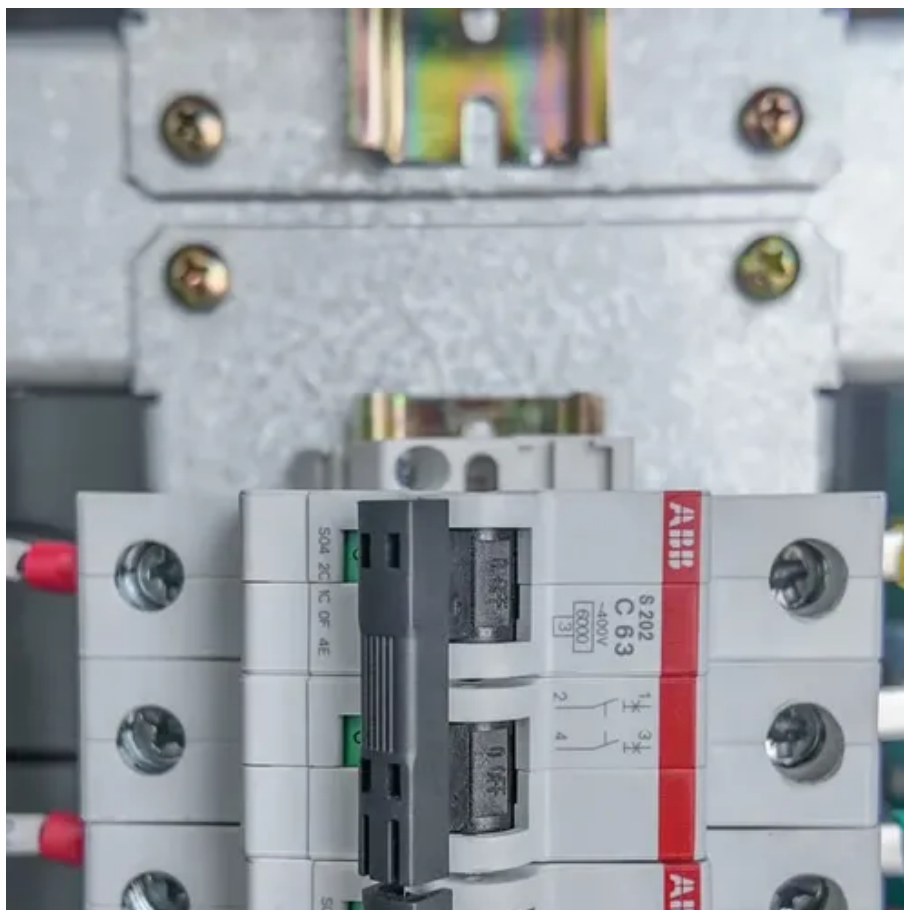




How to use wind power communication equipment in base stations





Overview

A complete guide to the best communication equipment for wind farms, including recommended headsets, ear defenders, and two-way radios for renewable energy sites.

A complete guide to the best communication equipment for wind farms, including recommended headsets, ear defenders, and two-way radios for renewable energy sites.

Empower your wind farm operations with Maisvch's industrial-grade SCADA, video, and wireless communication systems. Designed to withstand extreme offshore and onshore conditions, our solutions deliver real-time monitoring, seamless connectivity, and maximum reliability to keep your wind power.

Highjoule HJ-SG-D03 series outdoor communication energy cabinet is designed for remote communication base stations and industrial sites to meet the energy and communication needs of the sites. $\leq 4000\text{m}$ (1800m~4000m, every time the altitude rises by 200m, the temperature will decrease by 1oC.).

Wind farm communication equipment must withstand salt spray, extreme temperatures, dust, humidity, and mechanical vibration—particularly in offshore wind farm requirements. Communication networks are exposed to heavy EMI/EMC, requiring hardened industrial devices. To ensure efficient wind farm.

Effective communication is the backbone of any successful industrial operation, and this is especially true for wind farms and large-scale renewable energy sites. These environments present unique challenges, from remote, sprawling locations to high levels of ambient noise and stringent safety.

Building a communication network for a wind power plant is a complex but essential task. Effective communication ensures the efficient operation and maintenance of wind turbines, enabling operators to monitor performance, diagnose issues, and make informed decisions. In this article, we will delve.

Wind power plants operate in remote, harsh, and often unpredictable environments. Reliable communication between maintenance crews and control centers is critical — especially during turbine malfunctions or scheduled



inspections. Traditionally, operators relied on analog radios or simple intercoms.



How to use wind power communication equipment in base stations

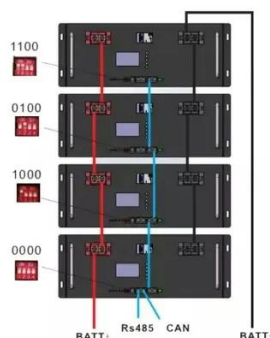


[Outdoor Communication Energy Cabinet With Wind Turbine](#)

Highjoule HJ-SG-D03 series outdoor communication energy cabinet is designed for remote communication base stations and industrial sites to meet the energy and communication ...

Reliable Communication System for Wind Power Plants: A Case ...

Explore our case study on a robust Communication System for Wind Power Plants. Discover how our Communication System for Wind Power Plants enhances efficiency.



[How to Build a Communication Network for a Wind Power Plant](#)

Building a communication network for a wind power plant is a complex but essential task. Effective communication ensures the efficient operation and maintenance of ...



[Offshore wind Offshore wind: Communication](#)

Our telecommunication engineers have an innovative approach to communication systems that is based on 40 years of solid experience with



delivering everything from data network and radio

...



Offshore & Onshore Wind Power Communication Solutions

To address the demanding communication requirements of wind farms, Maisvch offers a comprehensive video and voice transmission solution that ensures uninterrupted connectivity ...

Wind Farm Connectivity & Telemetry Solutions

Enhance wind farm communications with rugged wireless and fiber network solutions. Explore smart connectivity, telemetry, and data analysis tools ...



Near and far points of wind power for communication base ...

We investigate the use of wind turbine-mounted base stations (WTBSs) as a cost-effective solution for regions with high wind energy potential, since it could replace or even outperform



[Wind Farm Communication: A Guide to the Best Equipment](#)

A complete guide to the best communication equipment for wind farms, including recommended headsets, ear defenders, and two-way radios for renewable energy sites.



[Wind Farm Connectivity & Telemetry Solutions , COME-STAR](#)

Enhance wind farm communications with rugged wireless and fiber network solutions. Explore smart connectivity, telemetry, and data analysis tools for onshore and offshore wind farms.

[Wind Power Plants Communication Solutions](#)

Timely and effective communication among personnel is crucial during daily operations, equipment maintenance, and emergency response. Harsh natural conditions such as strong ...



[Research on Offshore Wind Power Communication System ...](#)

In view of the special needs of the communication system, a communication system scheme for offshore wind farms based on 5G technology is proposed.



Contact Us

For inquiries, pricing, or partnerships:

<https://www.sccd-sk.eu>

Phone: +32 2 808 71 94

Email: info@sccd-sk.eu

Scan QR code for WhatsApp.

